

doi: 10.12029/gc20160507

杨勇, 汤良杰, 郭颖, 等. 塔中隆起 NNE 向走滑断裂特征及形成机制[J]. 中国地质, 2016, 43(5): 1569–1578.

Yang Yong, Tang Liangjie, Guo Ying, et al. Deformation characteristics and formation mechanism of NNE-trending strike-slip faults in Tazhong Uplift[J]. *Geology in China*, 2016, 43(5): 1569–1578(in Chinese with English abstract).

## 塔中隆起 NNE 向走滑断裂特征及形成机制

杨 勇<sup>1,2,3</sup> 汤良杰<sup>2,3</sup> 郭 颖<sup>2,3</sup> 谢大庆<sup>4</sup>

(1. 中国地质科学院地质力学研究所, 北京 100081; 2. 中国石油大学油气资源与探测国家重点实验室, 北京 102249; 3. 中国石油大学盆地与油藏研究中心, 北京 102249; 4. 中国石化西北油田分公司, 新疆乌鲁木齐 830001)

**摘要:** 为了确定塔中隆起 NNE 向走滑断裂特征及形成机制, 利用构造要素相关性分析及构造解析方法, 通过对二维和三维资料的解释, 揭示了走滑断裂的构造变形特征, 确定了走滑断裂的形成机制。NNE 向走滑断裂在 seismic 剖面上表现为压扭和张扭在垂向上叠加的特点, 其形成演化主要经历了中奥陶世末压扭和晚志留世—中泥盆世张扭两个阶段。先存基底软弱带和塔里木板块周缘造山带的演化共同控制了这套走滑断裂的形成。中奥陶世末, 塔里木板块南缘洋盆俯冲闭合产生的近南北向挤压应力斜向作用于 NNE 向的基底软弱带之上, 导致断裂上部地层被撕裂产生走滑分量, 从而形成了北东向的左旋走滑断裂系统, 同时, 来自塔里木板块西北缘的挤压应力垂向作用于走滑断裂上, 导致 NNE 向走滑断裂发生压扭变形。晚志留世—中泥盆世, 塔里木板块南缘的挤压应力继续斜向作用于 NNE 向走滑断裂之上导致其继续发生走滑变形, 同时, 来自塔里木盆地西北缘的 NW 向伸展应力垂向作用于走滑断裂上, 导致 NNE 向走滑断裂发生张扭变形。

**关键词:** 塔中隆起; 断裂体系; 走滑断裂; 雁列式断层; 形成机制

**中图分类号:** P542<sup>+.3</sup>      **文献标志码:** A      **文章编号:** 1000–3657(2016)05–1569–10

## Deformation characteristics and formation mechanism of NNE-trending strike-slip faults in Tazhong Uplift

YANG Yong<sup>1,2,3</sup>, TANG Liang-jie<sup>2,3</sup>, GUO Ying<sup>2,3</sup>, XIE Da-qing<sup>4</sup>

(1. *Institute of Geomechanics, Chinese Academy of Geological Sciences, Beijing 100081, China;*  
2. *State Key Laboratory of Petroleum Resource and Prospecting, China University of Petroleum, Beijing 102249, China;*  
3. *Basin & Reservoir Research Center, China University of Petroleum, Beijing 102249, China;* 4. *Northwest Oilfield Company, SINOPEC, Urumqi 830011, Xinjiang, China*)

**Abstract:** In this study, the correlation method of structural factors and structural analysis were used to determine the formation mechanism of NNE-trending strike-slip faults in the Tazhong Uplift. The interpretation of 2D and 3D seismic data revealed deformation characteristics of the NNE-striking faults and determined their formation mechanism. NNE-trending strike-slip faults exhibit vertical superposition of compresso-shear faults and tenso-shear faults in seismic profiles. They have experienced two

收稿日期: 2015–10–26; 改回日期: 2016–05–20

基金项目: 国家自然科学基金项目(4097209、41572105)和国家专项“深部探测与实验研究”(SinoProbe–08–01)联合资助。

作者简介: 杨勇, 男, 1986 年生, 助理研究员, 主要从事含油气盆地构造分析方面的研究; E-mail: yy349971854@163.com。

stages of activities: the late Ordovician compresso-shear faulting and the late Silurian-middle Devonian tenso-shear faulting. The formation of the NNE-trending strike-slip faults was controlled by the pre-existing basement weak zone and the evolution of the orogenic belts around Tarim plate. At the end of Middle Ordovician, a NS-trending compressive stress was generated by the subduction and closure of the ocean basin on the south margin of Tarim plate, and it acted on the NE-trending basement weak zone, resulting in the formation of NNE-trending strike-slip faults. Meanwhile, the compressive stress from the northwest margin of Tarim plate vertically acted on the NNE-striking strike-slip fault, leading to the compresso-shear deformation. In late Silurian-middle Devonian period, the NS-trending compressive stress continually acted on the strike-slip faults, resulting in continued strike-slip deformation. Moreover, the extensional stress from the northwest margin of Tarim plate vertically acted on the NNE-striking strike-slip fault, leading to the tenso-shear deformation.

**Key words:** Tazhong uplift; fault system; strike-slip fault; en-echelon faults; formation mechanism

**About the first author:** YANG Yong, male, born in 1986, associate researcher, engages in the study of structural analysis of oil and gas bearing basins; E-mail: yy349971854@163.com.

**Fund support:** Supported by State Natural Science Foundation Program (No. 4097209 and 41572105) and Technology Major Project "Deep Exploration and Research" (No. SinoProbe-08-01).

## 1 引 言

塔里木盆地塔中低凸起为一早古生代古隆起,后期又经历了多期构造调整,构造变形复杂。除了塔中I号断裂带、塔中II号断裂带等NW向展布的逆冲断裂之外,最新的二维和三维资料显示在塔中隆起及其北部围斜区发育一系列NNE向走滑断裂。多位学者对这一系列走滑断裂的活动时间和形成机制开展过研究工作,并取得了许多成果:(1)走滑断裂主要活动期为中晚奥陶世、志留纪晚期、中泥盆世末<sup>[1-7]</sup>;(2)塔中隆起北坡雁列式张性正断层的形成与昆仑山早古生代碰撞造山之后的应力松弛有关<sup>[8]</sup>;(3)盆地西南缘或东南缘挤压应力对基底NE向先存基底构造会产生走滑分量,从而形成了NE向的左旋走滑断裂系统<sup>[6-7,9-10]</sup>。但是前人的模式无法解释为什么塔中隆起及其北坡发育的大量张扭性走滑断裂,另外也无法解释NNE向走滑断裂在垂向上发生了压扭-张扭的反转,NNE向走滑断裂形成机制是什么?形成过程是怎样的?仍然需要进一步的研究。本次研究在参考前人研究的基础上,利用塔中最近几年采集和处理的地震资料,结合现有钻井数据,开展精细构造解析,并结合盆地周缘造山带的演化,确定了塔中地区NNE向走滑断裂的形成过程和形成机制。

## 2 区域地质概况及基础资料

### 2.1 区域地质概况

塔中隆起位于塔里木盆地中部的塔克拉玛干

沙漠腹地,在构造上位于塔里木盆地中央隆起带中段(图1-a),呈NW-SE方向展布,北靠满加尔坳陷,西接阿瓦提坳陷和巴楚断隆,向南沿斜坡过渡到塔中孜巴斯坳陷。

塔中地区地层发育较全,除缺失侏罗系外,从前震旦系基底到第四系均有出露。前震旦系基底主要由太古宙、古元古代深变质岩系,以及中、新元古代中、浅变质岩系组成;震旦系是塔里木盆地基底形成以来的第一套沉积盖层,在塔中隆起带北部的满加尔坳陷向南超覆尖灭;上震旦统一奥陶系为海相碳酸盐岩沉积;志留-二叠系为海陆交互相沉积;三叠-第四系为陆相沉积<sup>[11]</sup>。塔中隆起带现今结构具有明显的双层构造特征:下层寒武-奥陶系海相碳酸盐岩为断裂控制的复式背斜隆起,表现为以北西向的塔中I号断裂带为主干断裂,其南侧的北西向断裂和近东西向断裂与之组成向西撒开、向东收敛的帚状构造;上层碎屑岩地层内断裂不发育,结构简单,志留系-石炭系表现为东南高、西北低的宽缓大斜坡,塔中隆起带南部断裂核部地区缺失志留系-泥盆系(图1-b)。塔中地区石炭系以上地层明显表现为西低东高的向北西倾没的平缓斜坡,只有局部地区可见少量断裂切穿石炭系,但是均未切穿二叠系及其以上地层,向东与塔东隆起带连为一体。

### 2.2 基础资料

为了确定塔中隆起NEE向走滑断裂的特征,本文收集了中国石化西北油田分公司最近几年在塔中隆起采集、处理的三维地震资料,分别是2006年的卡1三维区地震资料,2010年的顺北三维区地震

资料和2013年的顺南三维区地震资料。在典型钻井(中1井、顺1井、顺9井、顺南4、顺南5、顺南7等)层位标定的基础上,对典型地震剖面进行了解释。此外还引用了文献[4]中塔中82井区的地震剖面。三维区、钻井和地震剖面位置见图1。

### 3 走滑断裂的几何学特征

在塔中隆起北坡,发育一系列NNE向的走滑断裂,这些断裂与控制塔中隆起的NW向主断裂带在平面上近直交,形成了塔中隆起的网格状断裂系统(图1)。通过对二维和三维地震资料的解释,在塔中隆起及其北坡发现了至少15组NNE向走滑断裂,在二维地震剖面上主干断裂表现为高角度近似

直立断面,向下直插入基底,向上断至石炭系底,垂向断距不大,大多数仅仅表现为同相轴的在纵向上的一致性完全(图2)。在新的三维地震剖面上,走滑断裂带倾角很大,断面上缓下陡,与一般正断层、逆冲断层所显示的上陡下缓的产状特征相反,断裂在中一下奥陶统收敛为一条主断裂直插基底,在上奥陶统上部开始呈花状撒开(图3,图4)。在平面上,扭应力的存在会使沿走滑断裂形成一系列的雁列式构造,在顺北三维区,由于扭应力自深部基底向浅部盖层发散传递,在上奥陶统上部一中泥盆统形成了NNW向雁列展布的断层系统,这组破裂表现为与主位移带大角度相交的、延伸不长的正断层组(图3-a,b)。另外,走滑断裂主位移带一端常常

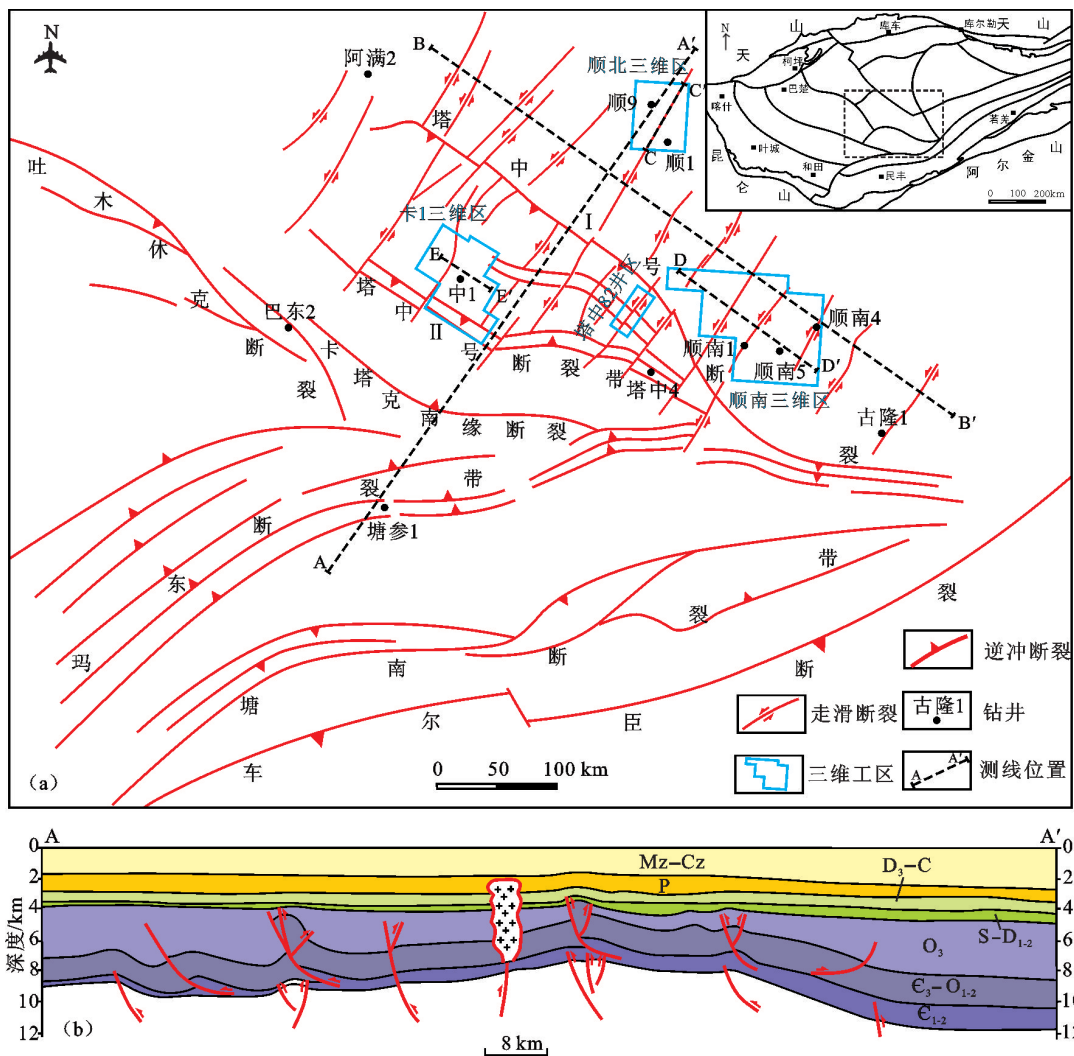


图1 塔中隆起断裂分布图(a)和地质剖面(b)  
Fig.1 Fault distribution(a) and geological section (b) of Tazhong uplift, Tarim Basin

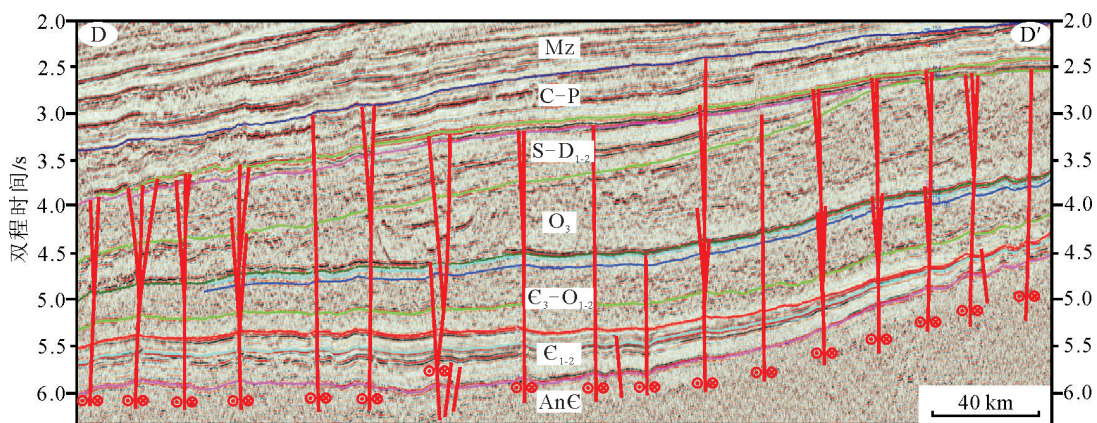


图2 塔中隆起北坡走滑断裂的二维地震剖面(剖面位置见图1)  
Fig.2 2D seismic section of strike-slip fault on the northern slope of Tazhong Uplift

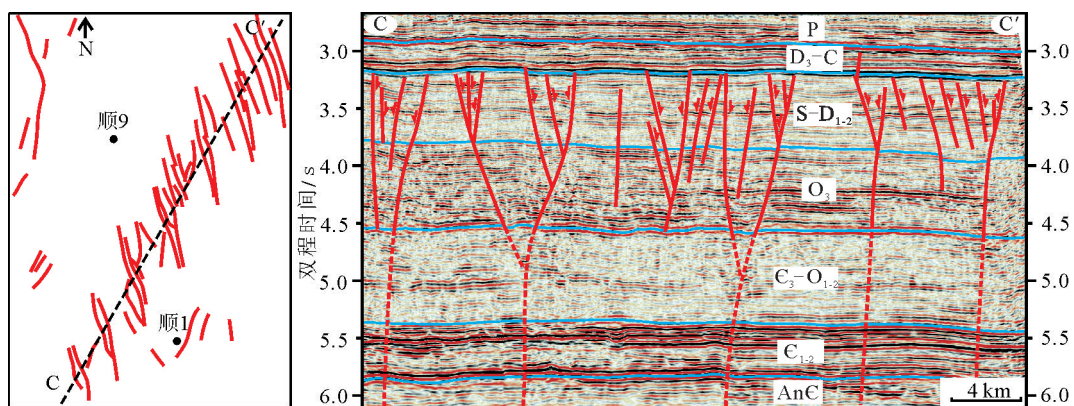


图3 塔中隆起北坡顺北三维区雁列式断层平面展布(左)和地震剖面(右)(顺北三维区位置见图1)  
Fig.3 Distribution map and 3D seismic section of en-echelon faults in Shunbei 3D area, northern slope of Tazhong Uplift

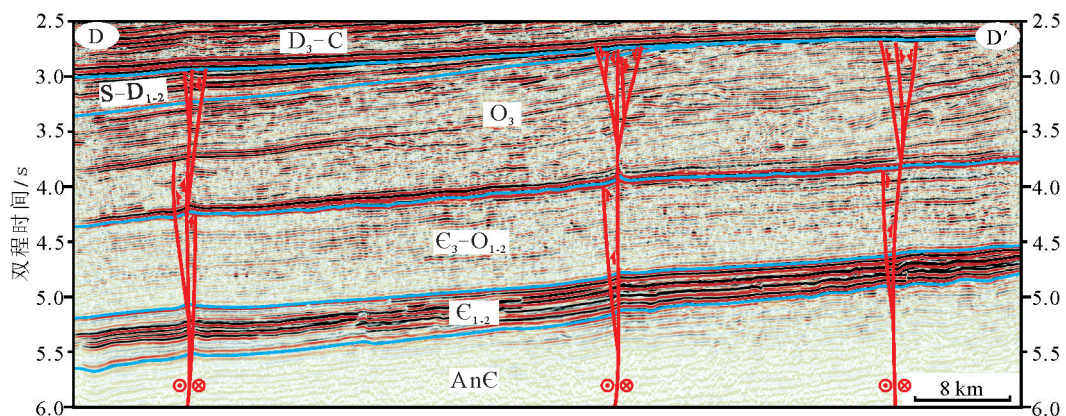


图4 塔中隆起北坡顺南三维区走滑断裂的地震剖面(剖面位置见图1)  
Fig.4 3D Seismic section of strike-slip fault in Shunnan 3D area, northern slope of Tazhong Uplift

会分化成马尾状断裂,并沿走向逐渐消失。在顺南1井、顺南4井等多条走滑断裂带端部均表现出发散的马尾状断裂组合<sup>[7]</sup>。

这些走滑断裂的性质在塔中隆起和顺托果勒地区又表现出一定的差异。塔中地区“负花状构造”发育<sup>[5,12]</sup>。在地震剖面上,主断面陡立,向下断穿寒武系至基底,向上多断至志留系—泥盆系,西部少量断至二叠系。主干断裂在上奥陶统一中泥盆统内部形成2条或多条分支断裂,向上撒开,形成反向下掉的断堑,向下收敛、合并,具有明显的“拉张、正断、向形”的负花状构造特征(图5,图6)。塔中北坡顺托果勒地区的走滑断裂带在垂向上不同层位表现出明显的性质差异:在中—下奥陶统顶部表现为具有“挤压、逆断、断垒”特征的正花状构造样式,而在上奥陶统顶部—中下泥盆统表现为具有“拉张、正断、断堑”特征的负花状构造样式,主干断裂及其伴生的分支断裂构成了“Y”和反“Y”字型的剖面组合样式(图3)。

## 4 走滑断裂的活动期次

二维和三维地震资料的综合解释显示,在地震剖面上,断裂断穿层位的特征可以显示为以下4种类型:①断裂向下断入前寒武系基底,向上断穿中奥陶统顶面,并向上消失在上奥陶统厚层泥岩中,错断的层位主要显示为逆冲的特征;②断裂向下断入前寒武系基底,向上断至中泥盆统顶面,在中奥陶统顶部表现为“逆断、断垒”的特征,在上奥陶统顶部—中下泥盆统表现为“正断、断堑”的特征;③自基底向上断穿至中寒武统顶面,并且在从中奥陶统顶面向上都表现为“正断、断堑”的特征;④上述第②和③断裂在少数地区向上断入石炭—二叠系。

从上述断裂断穿层位及发育特征判断,塔中隆起及其北坡走滑断裂的发育主要经历了中奥陶世末压扭和志留纪—中泥盆世张扭2个阶段,在石炭—二叠纪仅仅经历了微弱的调整改造,可能与当时的岩浆活动有关,因此本文未将石炭—二叠纪作为走滑断裂活动的关键阶段来考虑。

## 5 走滑断裂的形成机制

### 5.1 构造背景

奥陶纪—中泥盆世是塔里木盆地构造演化的

一个重要的构造转换期。塔里木盆地周缘的洋盆的拉张伸展、俯冲闭合及之后的碰撞造山均对盆地内构造变形产生了一定的影响。

#### (1) 西昆仑造山带

塔里木板块西南缘的昆仑洋从中奥陶世开始向南部中昆仑地体俯冲消减,并最终在志留纪闭合,中昆仑岛弧与塔里木大陆板块碰撞<sup>[14-19]</sup>。碰撞造山作用一直持续到晚中泥盆世末,造成库地缝合带北缘的塔南地区形成了周缘前陆褶皱冲断带和周缘前陆盆地<sup>[20]</sup>。塔中地区由于受到自南西向北东的挤压应力的影响,形成规模巨大的NW向逆冲断裂带<sup>[4,21-23]</sup>。

#### (2) 阿尔金造山带

塔里木板块东南缘的阿尔金洋在中奥陶世—志留纪经历了洋壳闭合、活动陆缘增生、弧/陆碰撞、陆陆碰撞和陆壳深俯冲过程<sup>[24-27]</sup>。强烈的碰撞造山运动造成塘古巴斯拗陷及塔东南地区都发生了强烈的断裂活动,车尔臣深断裂该时期以逆冲活动为主,兼有一定的走滑性质,在塘古巴斯拗陷,则形成了向NW凸出的弧形断裂系<sup>[22,28]</sup>。

#### (3) 南天山造山带

塔里木板块北缘的南天山造山带在古生代经历了复杂的构造演化与地壳增生过程<sup>[29-35]</sup>。分割塔里木板块和哈萨克—伊犁—中天山地块之间的南天山洋新元古代晚期—寒武纪,从中奥陶世晚期开始闭合。在南天山洋俯冲闭合的环境下,先前的研究者对塔里木盆地北缘志留纪—中泥盆世的构造环境的认识出现了分歧:①一些学者基于构造分析的研究方法,认为南天山洋在该时期一直都是向北俯冲并最终闭合,塔里木北缘一直为被动大陆边缘,而洋盆北缘的伊犁—中天山地块南缘则为活动大陆边缘<sup>[36-41]</sup>;②而另一些学者对南天山地区的冲断岩片和侵入岩的岩石地球化学研究显示,塔里木北缘在该时期已由被动陆缘转化为主动陆缘,并形成了一系列东西向分布的花岗质侵入岩,南天山古洋盆存在南北双向同时俯冲的阶段<sup>[42-49]</sup>。

最近有研究者发现南天山洋南缘在中奥陶世晚期—早石炭世先后经历了主动陆缘环境和被动陆缘环境:①南天山洋从中奥陶世晚期开始俯冲闭合,闭合通过洋壳向南俯冲到塔里木板块之下来实现,洋盆的俯冲闭合导致塔里木板块北缘处于区域

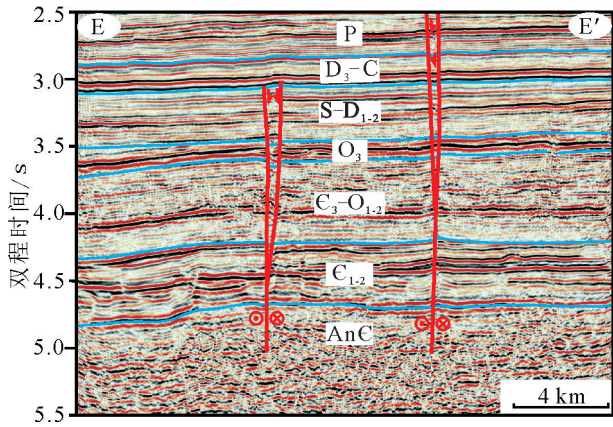


图5 卡1三维区走滑断裂的地震剖面(卡1三维区位置见图1)  
Fig.5 3D seismic section of strike-slip fault in Ka 1 3D area, Tazhong Uplift

挤压的构造环境;②晚志留世—早石炭世,由于南天山弧后盆地的形成,塔里木板块北缘处于区域伸展的构造环境<sup>[32-35]</sup>。

5.2 基底软弱带

前人研究发现,塔里木盆地北纬40°附近分布

有一条东西向的正磁异常带,塔中地区位于该异常带之南,由近北东向相间的正负磁异常带构成,这种近北东向相间的正负航磁异常带可能代表了塔中存在北东向的隐伏基底断裂。该隐伏基底断裂作为构造薄弱带,在后期区域应力场作用下容易沿基底产生破裂,这可能是塔中地区大规模北东向走滑断裂发育的基础<sup>[50-51]</sup>。

5.3 形成模式

(1)中奥陶世压扭断裂的形成模式

从中奥陶世开始,塔里木板块西南缘的古昆仑洋、东南缘的阿尔金洋和北侧的南天山洋相继进入俯冲阶段,塔里木板块处于南北两侧双向挤压的构造环境。

古昆仑洋、阿尔金洋的俯冲闭合导致在塔里木盆地南缘形成了两套断裂系统:受控于西昆仑造山带的塔中NW向帚状断裂系和受控于阿尔金造山带的塘古巴斯坳陷NEE向弧形断裂系。两套断裂系统在平面上斜交,从交切关系上可以判断NEE向弧形断裂系形成时间略晚于NW向帚状断裂系。来自

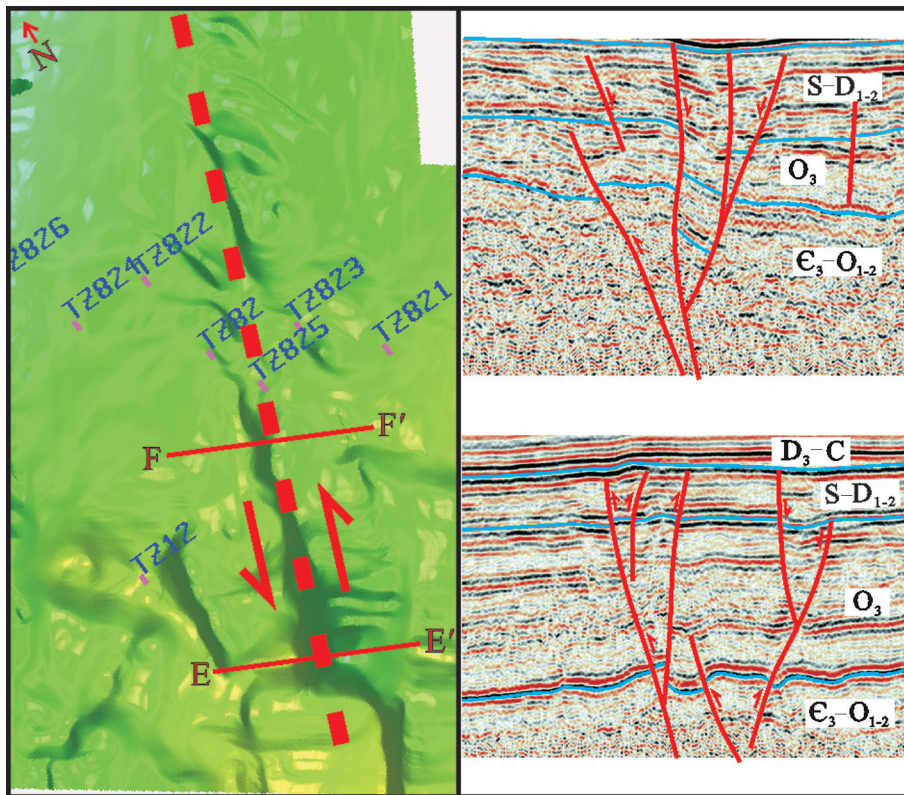


图6 塔中82井区奥陶系碳酸盐岩顶面立体图与地震剖面(据文献[13]修改)  
(塔中82井三维区位置见图1)

Fig.6 Structural map and seismic section of Ordovician carbonate in TZ82 strike-slip fault, Tazhong uplift

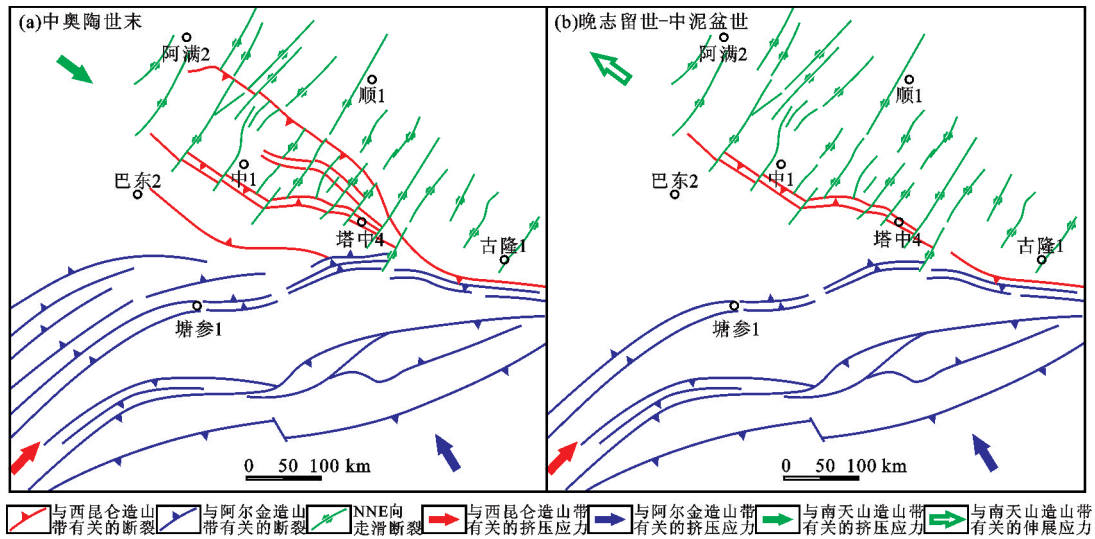


图7 塔中隆起NNE向走滑断裂压扭变形和张扭变形的动力学背景

Fig.7 Dynamic background of compresso-shear deformation and tenso-shear deformation of the NNE-trending strike-slip faults, Tazhong Uplift

阿尔金造山带的挤压应力通过NEE向弧形断裂传递到塔中隆起,斜向作用于NNE向的基底软弱带之上,导致断裂上部地层被撕裂产生走滑分量,从而形成了北东向的左旋走滑断裂系统(图7-a)。同时,塔里木板块北缘南天山洋(特别是西南天山洋)俯冲消减所产生的向NW向南东的挤压应力近垂直向作用于走滑断裂上,导致主断裂带在中一下奥陶统顶部表现为正花状的构造变形特征(图7-a)。

(2)晚志留世—中泥盆世张扭断裂的形成模式

晚志留世—中泥盆世,塔里木地块南侧仍为挤压体制,塔中NW向帚状断裂系和塘古巴斯坳陷NEE向弧形断裂系继承性活动。由于南天山弧后盆地的形成,塔里木板块北缘为被动陆缘环境,盆地西北缘志留纪被动陆缘沉积和盆地内部志留纪—中泥盆世发育的正断层均反映了这期区域伸展<sup>[8,52-53]</sup>。在这种南压北张的构造环境下,先前已经形成走滑断裂发生继承性活动和调整改造,一方面来自阿尔金造山带的挤压应力继续斜向作用于NNE向走滑断裂之上,另一方面受南天山洋(特别是西南天山洋)弧后裂谷作用产生的NW向伸展应力近垂直向作用于走滑断裂上,导致主断裂带在上奥陶统顶部—中下泥盆统表现为负花状的构造变形特征(图7-b)。

## 6 结论

(1)塔中隆起及其北坡走滑断裂发育,在地震

剖面上表现为压扭和张扭在垂向上叠加的特点,其形成演化主要经历了中奥陶世末压扭和晚志留世—中泥盆世张扭2个阶段。

(2)中奥陶世末,来自阿尔金造山带的冲断挤压应力通过塘古巴斯坳陷NEE向弧形断裂传递到塔中隆起,斜向作用于塔中隆起NNE向的基底软弱带之上,导致断裂上部地层被撕裂产生走滑分量,从而形成了NNE向的左旋走滑断裂系统。此外,由于南天山洋(特别是西南天山洋)俯冲消减所产生的向北西向南东的挤压应力近垂直向作用于走滑断裂上,导致NNE向走滑断裂发生压扭变形。

(3)晚志留世—中泥盆世,走滑断裂发生继承性活动和调整改造。一方面,来自塔里木板块南缘的挤压应力继续斜向作用于NNE向走滑断裂之上导致其继续发生走滑变形;另一方面,从晚志留世开始,南天山弧后盆地逐渐形成,塔里木板块北缘的构造环境由区域挤压转变为区域伸展,受南天山洋弧后裂谷作用产生的NW向伸展应力近垂直向作用于走滑断裂上,导致整个NNE向走滑断裂发生张扭变形。

### 参考文献(References):

[1] 张仲培,王毅,云金表,等. 塔中地区断裂不同演化阶段对油气聚集的控制[J]. 石油与天然气地质, 2009, 30(3): 316-323.  
Zhang Zhongpei, Wang Yi, Yun Jinbiao, et al. Control of faults at different evolution stages on hydrocarbon accumulation in Tazhong area, the Tarim Basin[J]. Oil & Gas Geology, 2009, 30(3): 316-

- 323(in Chinese with English abstract).
- [2] 李传新, 贾承造, 李本亮, 等. 塔里木盆地塔中低凸起北斜坡古生代断裂展布与构造演化[J]. 地质学报, 2009, 83(8): 1066–1073.  
Li Chuanxin, Jia Chengzao, Li Benliang, et al. Distribution and tectonic evolution of the Paleozoic fault system, the north slope of Tazhong uplift, Tarim Basin[J]. Acta Geologica Sinica, 2009, 83(8): 1066–1073(in Chinese with English abstract).
- [3] 李传新, 王晓丰, 李本亮. 塔里木盆地塔中低凸起古生代断裂构造样式与成因探讨[J]. 地质学报, 2010, 84(2): 1727–1734.  
Li Chuanxin, Wang Xiaofeng, Li Benliang, et al. Paleozoic faulting structure styles of the Tazhong low uplift, Tarim basin and its mechanism[J]. Acta Geologica Sinica, 2010, 84(2): 1727–1734(in Chinese with English abstract).
- [4] 郭光辉, 杨海军, 屈泰来, 等. 塔里木盆地塔中隆起断裂系统特征及其对海相碳酸盐岩油气的控制作用[J]. 岩石学报, 2012, 28(3): 793–805.  
Wu Guanghui, Yang Haijun, Qu Tailai, et al. The fault system characteristics and its controlling roles on marine carbonate hydrocarbon in the central uplift, Tarim basin[J]. Acta Petrologica Sinica, 28(3): 793–805(in Chinese with English abstract).
- [5] Li Chuanxin, Wang Xiaofeng, Li Benliang, et al. Paleozoic fault systems of the Tazhong uplift, Tarim basin, China[J]. Marine and Petroleum Geology, 2013, 39: 48–58.
- [6] 杨圣彬, 刘军, 李慧莉, 等. 塔中北围斜区北东向走滑断裂特征及其控油作用[J]. 石油与天然气地质, 2013, 34(6): 797–802.  
Yang Shengbin, Liu Jun, Li Huili, et al. Characteristics of the NE-trending strike-slip fault system and its control on oil accumulation in north peri-cline area of the Tazhong paleouplift[J]. Oil & Gas Geology, 2013, 34(6): 797–802(in Chinese with English abstract).
- [7] 黄太柱. 塔里木盆地塔中北坡构造解析与油气勘探方向[J]. 石油实验地质, 2014, 36(3): 257–267.  
Huang Taizhu. Structural interpretation and petroleum exploration targets in northern slope of middle Tarim Basin[J]. Petroleum Geology & Experiment, 2014, 36(3): 257–267(in Chinese with English abstract).
- [8] Li YueJun, Wen Lei, Yang HaiJun, et al. New discovery and geological significance of Late Silurian–Carboniferous extensional structures in Tarim Basin[J]. Journal of Asian Earth Sciences. 2015, 98: 304–319.
- [9] 郭光辉, 成丽芳, 刘玉魁, 等. 塔里木盆地寒武—奥陶系走滑断裂系统特征及其控油作用[J]. 新疆石油地质, 2011, 32(3): 239–243.  
Wu Guanghui, Cheng Lifang, Liu Yukui, et al. Strike-slip fault system of the Cambrian–Ordovician and its oil-controlling effect in Tarim Basin[J]. Xinjiang Petroleum Geology, 2011, 32(3): 239–243(in Chinese with English abstract).
- [10] 马庆佑, 沙旭光, 李玉兰, 等. 塔中顺托果勒区块走滑断裂特征及控油作用[J]. 石油实验地质, 2013, 34(2): 120–124.  
Ma Qingyou, Sha Xuguang, Li Yulan, et al. Characteristics of strike-slip fault and its controlling on oil in Shuntuoguole region, middle Tarim basin[J]. Petroleum Geology & Experiment, 2013, 34(2): 120–124(in Chinese with English abstract).
- [11] 张智礼, 李慧莉, 熊平, 等. 塔中北坡中奥陶统一间房组碳同位素地层学研究[J]. 中国地质, 2016, 43(2): 638–649.  
Zhang Zhili, Li Huili, Xiong Ping, et al. A study of carbon isotope stratigraphy of the middle Ordovician Yijianfang Formation on the north slope of Tazhong area[J]. Geology in China, 2016, 43(2): 638–649(in Chinese with English abstract).
- [12] Lan Xiaodong, Lv Xiuxiang, Zhu Yanming, et al. The geometry and origin of strike-slip faults cutting the Tazhong low rise megaanticline (central uplift, Tarim Basin, China) and their control on hydrocarbon distribution in carbonate reservoirs[J]. Journal of Natural Gas Science and Engineering, 2015, 22: 633–645.
- [13] 郭光辉, 陈志勇, 曲泰来, 等. 塔里木盆地走滑带碳酸盐岩断裂相特征及其与油气关系[J]. 地质学报, 2012, 86(2): 219–227.  
Wu Guanghui, Chen Zhiyong, Qu Tailai, et al. Characteristics of the strike-slip fault facies in Ordovician carbonate in the Tarim basin, and its relations to hydrocarbon[J]. Acta Geologica Sinica, 2012, 86(2): 219–227(in Chinese with English abstract).
- [14] 潘裕生. 青藏高原第五缝合带的发现与论证[J]. 地球物理学报, 1994, 37(2): 184–191.  
Pan Yusheng. Discovery and Evidence of the fifth suture zone of Qinghai–Xizang Plateau[J]. Acta Geophysica Sinica, 1994, 37(2): 184–191(in Chinese with English abstract).
- [15] 吴世敏, 马瑞士, 卢华复, 等. 西昆仑早古生代构造演化及其对塔西南盆地的影响[J]. 南京大学学报, 1996, 32(4): 650–657.  
Wu Shimin, Ma Ruishi, Lu Huafu, et al. The western Kunlun paleozoic tectonic evolution and its effect on SW Tarim basin[J]. Journal of Nanjing University(Natural Sciences), 1996, 32(4): 650–657(in Chinese with English abstract).
- [16] Matte P H, Tapponnier P, Arnaud N, et al. Tectonics of western Tibet, between the Tarim and the Indus[J]. Earth and Planetary Science Letters, 1996, 142(3/4): 311–330.
- [17] 罗金海, 何登发. 西昆仑造山带的演化对塔里木盆地中央隆起带的影响[C]// 陈海泓, 候泉林, 肖文交主编. 中国碰撞造山带研究[M]. 北京: 海洋出版社, 1999: 209–216.  
Luo Jinhai, He Dengfa. The influence of the evolution of the West Kunlun orogenic belt on the central uplift belt of the Tarim Basin[C]//Chen Haihong, Hou Quanlin, Xiao Wenjiao (ed.). Collision Orogenic Belts of China[M]. Beijing: China Ocean Press, 1999: 209–216(in Chinese).
- [18] 罗金海, 车自成, 刘良, 等. 西昆仑北带早志留世构造作用及其区域地质意义[J]. 西北大学学报(自然科学版), 2009, 39(3): 517–521.  
Luo Jinhai, Che Zicheng, Liu Liang, et al. Early Silurian tectonism and its regional geological significance in the northern West Kunlun orogen, NW China[J]. Journal of Northwest



- University (Natural Science Edition), 2009, 39(3): 517–521(in Chinese with English abstract).
- [19] 高晓峰, 校培喜, 康磊, 等. 西昆仑大同西岩体成因: 矿物学、地球化学和锆石 U–Pb 年代学制约[J]. 岩石学报, 2013, 29(9): 3065–3079.
- Gao Xiaofeng, Xiao Peixi, Kanglei, et al. Origin of Datongxi pluton in the West Kunlun orogen: Constraints from mineralogy, elemental geochemistry and zircon U–Pb age[J]. *Acta Petrologica Sinica*, 29 (9): 3065–3079(in Chinese with English abstract).
- [20] 魏国齐, 贾承造, 李本亮, 等. 塔里木盆地南缘志留–泥盆纪周缘前陆盆地[J]. 科学通报, 2002, 47(增刊): 44–47.
- Wei Guoqi, Jia Chengzao, Li Benliang, et al. The Silurian–Devonian peripheral foreland basin of the southern part of Tarim basin[J]. *Chinese Science Bulletin*, 2002, 47(Supp.): 44–47(in Chinese).
- [21] 李本亮, 管树巍, 李传新, 等. 塔里木盆地塔中低凸起古构造演化与变形特征[J]. 地质论评, 2009, 55(4): 521–530.
- Li Benliang, Guan Shuwei, Li Chuanxin, et al. Paleo–tectonic evolution and deformation features of the lower uplift in the central Tarim basin[J]. *Geological Review*, 2009, 55(4): 521–530 (in Chinese with English abstract).
- [22] 任建业, 张俊霞, 阳怀忠, 等. 塔里木盆地中央隆起带断裂系统分析[J]. 岩石学报, 2011, 27(1): 219–230.
- Ren Jianye, Zhang Junjie, Yang Huaizhong, et al. Analysis of fault systems in the Central uplift, Tarim basin[J]. *Acta Petrologica Sinica*, 27(1): 219–230(in Chinese with English abstract).
- [23] 任建业, 胡德胜, 阳怀忠, 等. 塔中隆起带断裂系统及其对碳酸盐岩台地的控制[J]. 中国地质, 2011, 38(4): 935–944.
- Ren Jianye, Hu Desheng, Yang Huaizhong, et al. Fault system and its control of carbonate platform in Tazhong uplift area, Tarim basin[J]. *Geology in China*, 2011, 38(4): 935–944(in Chinese with English abstract).
- [24] 杨经绥, 宋曙光, 许志琴, 等. 柴达木盆地北缘早古生代高压–超高压变质带中发现典型超高压矿物: 柯石英[J]. 地质学报, 2001, 75(2): 175–179.
- Yang Jingsui, Song Shuguang, Xu Zhiqin, et al. Discovery of coesite in the North Qaidam early Paleozoic ultrahigh–high Pressure (UHP–HP) Metamorphic belt, NW China[J]. *Acta Geologica Sinica*, 2001, 75(2): 175–179(in Chinese with English abstract).
- [25] Zhang Jianxin, Mattinson C G, Meng F C, et al. An Early Palaeozoic HP/HT granulite–garnet peridotite association in the south Altyn Tagh, NW China:  $p$ – $T$  history and U–Pb geochronology[J]. *Journal of Metamorphic Geology*, 2005, 23: 491–510.
- [26] Zhang Jianxin, Mattinson C G, Yu Shengyao, et al. U–Pb zircon geochronology of coesite–bearing eclogues from the southern Dulan area of the North Qaidam UHP terrane, northwestern China; Spatially and extensive UHP metamorphism during continental temporally subduction[J]. *Journal of Metamorphic Geology*, 2010, 28: 955–978.
- [27] 许志琴, 李思田, 张建新, 等. 塔里木地块与古亚洲 / 特提斯构造体系的对接[J]. 岩石学报, 2011, 27(1): 1–22.
- Xu Zhiqin, Li Sitian, Zhang Jianxin, et al. Paleo–Asian and Tethyan tectonic systems with docking the Tarim block. *Acta Petrologica Sinica*, 27(1): 1–22(in Chinese with English abstract).
- [28] 李浩武, 王建君, 邬光辉, 等. 塔里木盆地塘古孜巴斯坳陷西部中加里东期断裂特征及形成机制[J]. 中南大学学报(自然科学版), 2014, 45(12): 4331–4341.
- Li Haowu, Wang Jianjun, Wu Guanghui, et al. Features and formation mechanism of middle Caledonian faults in west of Tangguzibasi depression, Tarim Basin[J]. *Journal of Central South University (Science and Technology)*, 2014, 45(12): 4331–4341 (in Chinese with English abstract).
- [29] Xiao Wenjiao, Zhang Lianchang, Qin Kezhang, et al. Paleozoic accretionary and collisional tectonics of the Eastern Tianshan (China): Implications for the continental growth of central Asia[J]. *American Journal of Science*, 2004, 304: 370–395.
- [30] Xiao Wenjiao, Windley B F, Yuan Chao, et al. Paleozoic multiple subduction–accretion processes of the Southern Altaids[J]. *American Journal of Science*, 2009, 309, 221–270.
- [31] Charvet J, Shu Liangshu, Laurent–Charvet S, et al. Paleozoic structural and geodynamic evolution of eastern Tianshan (NW China): welding of the Tarim and Junggar plates[J]. *Episodes* 2007, 30 (3): 162–186.
- [32] Charvet J, Shu Liangshu, Laurent–Charvet S, et al. Palaeozoic tectonic evolution of the Tianshan belt, NW China[J]. *Science China Earth Sciences*, 2011, 54(2): 166–184.
- [33] Wang Bo, Faure M, Cluzel D, et al. Late Paleozoic tectonic evolution of the northern West Tianshan, NW China[J]. *Geodinamica Acta* 2006, 19(3–4): 237–247.
- [34] Wang Bo, Shu Liangshu, Cluzel D, et al. Geochemical constraints on Carboniferous volcanic rocks of Yili Block (Xinjiang, NW China): implication on tectonic evolution of Western Tianshan[J]. *Journal of Asian Earth Sciences*, 2007, 29: 148–159.
- [35] Wang Qingchen, Shu Liangshu, Charvet J, et al. Understanding and study perspectives on tectonic evolution and crustal structure of the Paleozoic Chinese Tianshan[J]. *Episodes*, 2010, 33 (4): 242–265.
- [36] 肖序常, 汤耀庆. 古中亚复合巨型缝合带南缘构造演化[M]. 北京: 北京科学技术出版社, 1991: 1–150.
- Xiao Xuchang, Tang Yaoqing. *Tectonic Evolution of the Southern Margin of the Paleo–Asian Composite Megasuture*[M]. Beijing: Beijing Science and Technology Publishing House, 1991: 1–150.
- [37] 刘本培, 王自强, 张传恒, 等. 西南天山构造格局与演化[M]. 武汉: 中国地质大学出版社, 1996: 1–128.
- Liu Benpei, Wang Ziqiang, Zhang Chuanheng, et al. *Tectonic Framework and Evolution in the Southwest Tianshan*[M]. Wuhan:

- China University of Geosciences Press, 1996: 1–120(in Chinese).
- [38] 高俊, 龙灵利, 钱青, 等. 南天山: 晚古生代还是三叠纪碰撞造山带? [J]. 岩石学报, 2006, 22(5): 1049–1061.
- Gao Jun, Long Lingli, Qian Qing, et al. South Tianshan: a late Paleozoic or a Triassic orogeny? [J]. *Acta Petrologica Sinica*, 2006, 22(5): 1049–1061(in Chinese with English abstract).
- [39] Xiao Wenjiao, Huang Baochun, Han Chunming, et al. A review of the western part of the Altaids: A key to understanding the architecture of accretionary orogens[J]. *Gondwana Research*, 2010, 18(2): 253–273.
- [40] Gao Jun, Klemd R, Qian Qing, et al. The collision between the Yili and Tarim blocks of the southwestern Altaids: Geochemical and age constraints of a leucogranite dike crosscutting the HP–LT metamorphic belt in the Chinese Tianshan Orogen. *Tectonophysics*, 2011, 499(1): 118–131.
- [41] 赵一珏, 杨经绥, 刘仕军, 等. 新疆中天山巴仑台闪长岩成因及其地质意义[J]. 中国地质, 2015, 42(5): 1228–1241.
- Zhao Yijue, Yang Jingsui, Liu Shijun, et al. The origin of the Baluntai diorite in Central Tianshan Mountains, Xinjiang, and its geological significance[J]. *Geology in China*, 2015, 42(5): 1228–1241(in Chinese with English abstract).
- [42] 姜常义, 穆艳梅, 赵晓宁, 等. 塔里木板块北缘活动陆缘型侵入岩带的岩石学与地球化学[J]. 中国区域地质, 2001, 20(2): 158–163.
- Jiang Changyi, Mu Yanmei, Zhao Xiaoning, et al. Petrology and geochemistry of an active continental–margin intrusive rock belt on the northern margin of the Tarim plate[J]. *Regional Geology of China*, 2001, 20(2): 158–163(in Chinese with English abstract).
- [43] 朱志新, 李锦轶, 董连慧, 等. 新疆塔里木北缘色日牙克依拉克一带泥盆纪花岗岩侵入体的确定及其地质意义[J]. 岩石学报, 2008, 24(5): 971–976.
- Zhu Zhixin, Li Jingyi, Dong Lianhui, et al. Age determination and geological significance of Devonian granitic intrusions in Serivakevilake region, northern margin of Tarim basin, Xinjiang[J]. *Acta Petrologica Sinica*, 2008, 24(5): 971–976(in Chinese with English abstract).
- [44] 王超, 罗金海, 车自成, 等. 新疆欧西达坂花岗岩体地球化学特征和锆石 LA–ICP–MS 定年: 西南天山古生代洋盆俯冲作用过程的启示[J]. 地质学报, 2009, 83(2): 272–283.
- Wang Chao, Luo Jinhai, Che Zicheng, et al. Geochemical characteristics and U–Pb LA–ICP–MS zircon dating of the Oxidaban pluton from Xinjiang, China: Implication for a Paleozoic oceanic subduction on process in southwestern Tianshan[J]. *Acta Geologica Sinica*, 2009, 83(2): 272–283(in Chinese with English abstract).
- [45] Wang Bo, Shu Liangshu, Faure M, et al. Paleozoic tectonics of the southern Chinese Tianshan: Insights from structural, chronological and geochemical studies of the Heiyingshan ophiolitic mélange (NW China)[J]. *Tectonophysics*, 2011, 497(1): 85–104.
- [46] Ge Rongfeng, Zhu Wenbin, Wu Hailin, et al. The Paleozoic northern margin of the Tarim Craton: Passive or active?[J]. *Lithos*, 2012, 142: 1–15.
- [47] 郭瑞清, 尼加提·阿布都逊, 秦切, 等. 新疆塔里木北缘志留纪花岗岩类侵入岩的地质特征及构造意义[J]. 地质通报, 2013, 32(2–3): 220–238.
- Guo Ruiqing, Nijiati A, Qin Qie, et al. Geological characteristics and tectonic significance of Silurian granitic intrusions in the northern Tarim craton, Xinjiang[J]. *Geological Bulletin of China*, 2013, 32(2–3): 220–238(in Chinese with English abstract).
- [48] Lin Wei, Chu Yang, Ji Wenbin, Geochronological and geochemical constraints for a middle Paleozoic continental arc on the northern margin of the Tarim block: Implications for the Paleozoic tectonic evolution of the South Chinese Tianshan[J]. *Lithos*, 2013, 5(4): 355–381.
- [49] Jiang Tuo, Gao Jun, Klemd R, et al. Paleozoic ophiolitic mélanges from the South Tianshan Orogen, NW China: Geological, geochemical and geochronological implications for the geodynamic setting[J]. *Tectonophysics*, 2014, 612–613: 106–127.
- [50] 徐鸣洁, 王良书, 钟楷, 等. 塔里木盆地重磁场特征与基底结构分析[J]. 高校地质学报, 2005, 11(4): 585–592.
- Xu Mingjie, Wang Liangshu, Zhong Kai, et al. Features of gravitational and magnetic fields in the Tarim basin and basement structure analysis[J]. *Geological Journal of China Universities*, 2005, 11(4): 585–592(in Chinese with English abstract).
- [51] 李曰俊, 吴根耀, 孟庆龙, 等. 塔里木盆地中央地区的断裂系统: 几何学、运动学和动力学背景[J]. 地质科学, 2008, 43(1): 82–118.
- Li Yuejun, Wu Genyao, Meng Qinglong, et al. Fault systems in central area of the Tarim Basin: geometry, kinematics and dynamic settings[J]. *Chinese Journal of Geology*, 2008, 43(1): 82–118(in Chinese with English abstract).
- [52] 周新源, 李曰俊, 王招明, 等. 塔里木盆地西北缘下志留统沉积构造背景初探[J]. 地质科学, 2002, 37(增刊): 57–63.
- Zhou Xinyuan, Li Yuejun, Wang Zhaoming, et al. A preliminary study on tectonic setting of the lower Silurian in NW Tarim[J]. *Chinese Journal of Geology*, 2002, 37(sup.): 57–63(in Chinese with English abstract).
- [53] 卢华复, 王胜利, 罗俊成, 等. 塔里木盆地东部断裂系统及其构造演化[J]. 石油与天然气地质, 2006, 27(4): 433–441.
- Lu Huafu, Wang Shengli, Luo Juncheng, et al. Fault systems and their tectonic evolution in the Eastern Tarim basin[J]. *Oil & Gas Geology*, 2006, 27(4): 433–441(in Chinese with English abstract).