

冷秋锋, 唐菊兴, 郑文宝, 等. 西藏拉抗俄斑岩铜钼矿床辉钼矿 Re-Os 同位素测年及其地质意义[J]. 中国地质, 2015, 42(2): 570-584.
Leng Qiufeng, Tang Juxing, Zheng Wenbao, et al. Re-Os dating of molybdenite from the Lakange porphyry Cu-Mo deposit in Tibet and its Geological Significance[J]. Geology in China, 2015, 42(2): 570-584(in Chinese with English abstract).

西藏拉抗俄斑岩铜钼矿床辉钼矿 Re-Os 同位素测年及其地质意义

冷秋锋¹ 唐菊兴² 郑文宝^{2,3} 张金树⁴ 唐攀¹ 严刚⁵ 董宇⁵

(1.成都理工大学地球科学学院, 四川 成都 610059; 2.中国地质科学院矿产资源研究所, 国土资源部成矿作用与资源评价重点实验室, 北京 100037; 3.中国地质大学(北京), 北京 100083; 4.西藏地质调查院, 西藏 拉萨 850000; 5.西藏第六地质大队, 西藏 堆龙德庆 851400)

摘要: 西藏冈底斯成矿带拉抗俄斑岩铜钼矿床位于西藏特提斯构造域拉萨地块东段中南部, 是近年来青藏高原地质大调查项目评价的重点矿床之一。本文在钻孔地质编录的基础上, 采用辉钼矿 Re-Os 同位素测年技术, 对抗拉俄铜钼矿床中 8 件产于花岗闪长斑岩中的辉钼矿进行定年, 获得了拉抗俄矿床辉钼矿成矿年龄, 辉钼矿 Re-Os 模式年龄为 $(13.20 \pm 0.20) \text{ Ma} \sim (13.64 \pm 0.21) \text{ Ma}$, 加权平均值为 $(13.38 \pm 0.15) \text{ Ma}$, 等时线年龄为 $(13.12 \pm 0.44) \text{ Ma}$, 代表了拉抗俄斑岩铜钼矿床的成矿时代, 成矿作用发生于中新世。辉钼矿中 Re 的含量为 $343.6 \times 10^{-6} \sim 835.7 \times 10^{-6}$, 平均 557.8×10^{-6} , 指示其成矿物质中有幔源物质加入。拉抗俄斑岩铜钼矿床形成于印度—亚洲大陆碰撞造山带碰撞过程的伸展背景, 其成矿年龄与冈底斯斑岩铜钼矿带东段中亚带众多斑岩—矽卡岩成矿系统年龄基本一致 (17~12 Ma), 相对于同一矿集区的驱龙、甲玛、邦铺斑岩—矽卡岩型铜多金属矿的成矿年龄小 2~3 Ma, 但其形成受控于相同的成矿地球动力学背景。

关键词: 地球化学; Re-Os 同位素测年; 成矿时代; 拉抗俄; 冈底斯; 西藏

中图分类号: P597; P618.41; P618.65 文献标志码: A 文章编号: 1000-3657(2015)02-0570-15

Re-Os dating of molybdenite from the Lakange porphyry Cu-Mo deposit in Tibet and its Geological Significance

LENG Qiu-feng¹, TANG Ju-xing², ZHENG Wen-bao^{2,3}, ZHANG Jin-shu⁴, TANG Pan¹,
YAN Gang⁵, DONG Yu⁵

(1. College of Earth Sciences, Chengdu University of Technology, Chengdu 610059, Sichuan, China; 2. MLR Key Laboratory of

收稿日期: 2014-05-07; 改回日期: 2015-01-26

基金项目: 中国地质调查局地质大调查项目 (12120114050501, 12120113093700)、国家自然科学基金项目 (41302060) 及国家 973 项目 (2011CB403103) 共同资助。

作者简介: 冷秋锋, 男, 1986 年生, 博士生, 矿物学、岩石学、矿床学专业; E-mail: lengqiufeng9@126.com。

通讯作者: 唐菊兴, 男, 1964 年生, 博士生导师, 研究员; 主要从事矿床学和固体矿产勘查与评价研究工作; E-mail: tangjuxing@126.com。

Metallogeny and Mineral Resource Assessment, Institute of Mineral Resources, Chinese Academy of Geological Sciences, Beijing 100037, China; 3. China University of Geosciences, Beijing 100083, China; 4. Tibet Institute of Geological Survey, Lhasa 850000, Tibet, China; 5. No. 6 Geological Party, Tibet Bureau of Geological Exploration and Exploitation of Mineral Resources, Doilujngdeqen 851400, Tibet, China)

Abstract: The Lakange porphyry Cu-Mo deposit in the Gangdise metallogenic belt of central and southern East Lhasa block within the Tethys tectonic domain is one of the key deposits in the Tibet Plateau geological survey project evaluation in recent years. Re-Os isotopic dating technique was applied for determination of mineralization events, and eight molybdenite samples were analyzed for Re-Os isotopic compositions, with the model ages obtained ranging from (13.20±0.20) Ma to (13.64±0.21) Ma, and the isochron age being (13.12±0.44) Ma which represents the metallogenic age of the Lakange porphyry Cu-Mo deposit, indicating Miocene. The Re content of the molybdenite is 343.6×10^{-6} – 835.7×10^{-6} , with an average of 557.8×10^{-6} , suggesting that the metallogenic material originated from a source with mantle components. The Lakange porphyry Cu-Mo deposit was formed in a stretching background of India-Asia continental collision orogenic collision, the age (17–12 Ma) is identical with ages of numerous porphyry-skarn mineralization systems in the eastern of Gangdise metallogenic belt, and is 2–3 Ma younger than ages of the porphyry-skarn copper polymetallic deposits in the same ore concentration area, such as Jiama, Qulong and Bangpu, with the formation controlled by the same metallogenic geodynamics setting.

Key words: geochemistry; Re-Os isotopic dating; metallogenic age; Lakange porphyry Cu-Mo deposit; Gangdise metallogenic belt; Tibet

About the first author: LENG Qiu-feng, male, born in 1986, doctor candidate, majors in mineralogy, petrology and mineral deposits; E-mail: lengqiufeng9@126.com.

About the corresponding author: TANG Ju-xing, male, born in 1964, professor and supervisor of doctor candidates, mainly engages in exploration and evaluation of mineral deposits and solid mineral resources; E-mail: tangjuxing@126.com.

冈底斯成矿带是青藏高原最重要的铜钼铅锌金银钨等多金属成矿带之一。近年来,在冈底斯成矿带陆续发现并评价了一系列大型-超大型金属矿床,如:雄村大型斑岩铜金矿^[1]、甲玛超大型斑岩-矽卡岩铜多金属矿^[2-4]、努日大型斑岩-矽卡岩铜钼钨矿^[5]、厅宫大型斑岩铜矿^[6]、驱龙超大型斑岩铜钼矿^[7,8]、邦铺大型斑岩-矽卡岩铜多金属矿床^[9]、亚贵拉大型矽卡岩铅锌钼银矿^[10]、蒙亚啊大型矽卡岩铅锌矿等,形成了冈底斯中南部斑岩铜矿带和北部矽卡岩型铅锌多金属成矿带^[11-12]。

拉抗俄斑岩铜钼矿床位于冈底斯成矿带南部东段,是20世纪80年代进行区域化探扫描时发现的化探异常点,随后90年代到21世纪初对该矿区相继进行了异常二级查证工作和矿点检查工作^①,总体上,矿区的研究程度相对较低。近年来,随着地质大调查项目的深入,对该矿床的公益性勘查评价和科学研究才得以大力开展。尽管前人对矿床进行了初步的矿床地球化学研究,并开展了初步的

蚀变和成矿年龄的研究^[13-14],但为了获得该矿床更精确的成矿年代,本文利用辉钼矿 Re-Os 同位素对拉抗俄矿床进行了成矿年代学研究,以便揭开其复杂成矿历史,确定矿床与冈底斯成矿带其他斑岩型矿床的时空关系,总结研究同类矿床分布规律。这不仅对冈底斯地区今后找矿评价具有实际意义,而且对深化和丰富斑岩成矿作用研究具有重要参考价值。

1 区域地质背景

拉抗俄斑岩铜钼矿床大地构造位置处于西藏特提斯构造域拉萨地块东段中南部,拉萨地块夹持于雅鲁藏布江缝合带与班公湖-怒江缝合带之间,又被称作冈底斯-念青唐古拉板片^[15]或者冈底斯造山带^[16]。冈底斯东段先后经历了班公湖-怒江古特提斯洋壳向南俯冲、雅鲁藏布江新特提斯洋形成、雅鲁藏布江新特提斯洋壳向北俯冲消亡、印度大陆与拉萨地块陆陆碰撞等构造发展演化历程,形成了

①西藏自治区地质调查院.西藏达孜县拉抗俄铜矿调查评价报告(内部资料),2010.

错综复杂的构造格局,主体表现为区域性东西向压性断裂、褶皱和南北向张性断裂带以及北东、北西向走滑断裂^[7]。伴随复杂的构造演化历程,区域内岩浆活动强烈,侵入岩和火山岩广泛发育且具有多期次、多类型、岩石组合复杂等特点。区域岩浆侵入主要发生于侏罗纪、早白垩世、晚白垩世、古新世—始新世和中新世;冈底斯东段二叠纪岩浆活动相对较弱,岩浆岩不甚发育;三叠纪岩浆岩分布局限,侵位时代多属于晚三叠世。区域火山喷发活动主要发生于早—中侏罗世、早白垩世、晚白垩世—始新世;另外,石炭纪—二叠纪火山岩在冈底斯弧背断隆带上亦有所发育。冈底斯东段矿产资源十分丰富、优势矿种繁多,主要金属矿产种类包括铜、铅、锌、金、银、钼、铁、钨、锡、铋、钴等,此外还发育有盐类、铀等非金属矿产和能源矿产。其中,铜、铅、锌、金等优势矿种具有储量大、品位高、开采条件佳等特点,目前冈底斯成矿带业已成为国家重要的资源接续基地。冈底斯成矿带东段部分矿床分布见图1。

2 矿区地质概况

矿区出露地层为叶巴组一、二段,多底沟组及第四系(图2)。叶巴组一岩段(J_{1-y^1})分布于矿区中部,呈近东西向展布,产状总体倾向北,倾角陡立,主要岩性为片理化安山岩、中基性火山角砾岩、绢云石英片岩、绿泥石英片岩及凝灰岩。岩石片理化发育,变形变质特征明显。叶巴组二岩段(J_{1-y^2})分布于矿区北部,与一岩段呈整合接触,呈近东西向展布,主要岩性为火山角砾岩、晶屑凝灰岩夹变质细砂岩、砂板岩等。多底沟组(J_3d)分布于矿区南部,与叶巴组呈断层接触。主要岩性为细晶灰岩、生物碎屑灰岩、大理岩化灰岩夹砂岩。岩石大理岩化及矽卡岩化显著。第四系(Q)主要沿水系河床及阶地分布,主要为全新统洪冲积砾石、砂砾石、含亚砂土层。矿区断裂构造发育,主要断裂构造呈东西向展布,次级断裂呈北西或北东向展布(图2)。矿区侵入岩主要分布于矿区中东部和西部(图2),分布面积约占矿区面积的20%,为喜山期中酸性侵入岩。岩石类型以花岗闪长斑岩为主,花岗斑岩为次,另外钻孔中可见石英闪长玢岩。火山岩主要分布于矿区中部、北部地区,出露大面积的侏罗系叶

巴组火山岩地层,出露约占矿区面积的60%,主要岩石类型有侏罗系叶巴组的火山熔岩,火山角砾岩、安山岩、流纹岩及凝灰岩等。

矿区蚀变类型丰富,主要有钾化、硅化、绢云母化、高岭土化、角岩化;次为矽卡岩化、大理岩化。钾化带:主要分布于花岗闪长斑岩近中心部位,表现为次生黑云母、钾长石呈细脉或团斑状产出,钾长石与石英共生组合组成细脉,黑云母呈鳞片状交代角闪石,石英具次生加大现象。石英—绢云母化带:主要位于花岗闪长斑岩体的内接触带及钾化带两侧,表现为石英呈脉状沿裂隙充填,石英有交代熔蚀、次生加大现象。绢云母交代斜长石、钾长石,呈团块状、脉状分布。高岭土化—硅化—绢云母带:该带为发育范围最广的蚀变带,受多种蚀变叠加,最常见的是高岭土化、绢云母化,高岭石、绢云母主要是长石等矿物蚀变产物,生成以高岭石为主的多种次生粘土矿物呈团块状分布,该带金属硫化物少,矿化差。黑云母角岩化带:分布范围受斑岩体与地层接触带控制,呈港湾状分布,表现为硅铝质岩石受热液变质作用,原岩矿物成分、结构构造发生变化,形成具鳞片变晶结构的黑云母角岩,该带无矿化显示。大理岩化带:为蚀变分布的最外带,分布于多底沟组中,由于碳酸盐地层发育,受热接触变质生成大理岩。铜钼矿化与石英绢云母化及钾化蚀变关系密切。

3 样品采集与分析测试

3.1 样品采集与分选

用于分析测试的8件辉钼矿样品均采自于拉抗俄矿床钻孔岩心,包括ZK101和ZK201。采样过程中考虑到不同阶段、不同产状及矿化形式的辉钼矿,样品中辉钼矿多呈细粒状或鳞片状,主要以辉钼矿+石英脉形式产出或产出于花岗闪长斑岩裂隙面上或者以细粒浸染状直接产出于斑岩体内部(图3和表1),辉钼矿与黄铜矿、黄铁矿等硫化物紧密共生,样品具有广泛代表性。样品的分选工作在河北省地质测绘院岩矿实验测试中心完成,在室内无污染环境下,用常规方法将样品粉碎至60~80目,经淘洗和磁选后,在双目镜下进一步分选至纯度达99%以上,然后用玛瑙钵研磨至200目。用于Re—Os同位素测试分析的辉钼矿质纯,无污染。

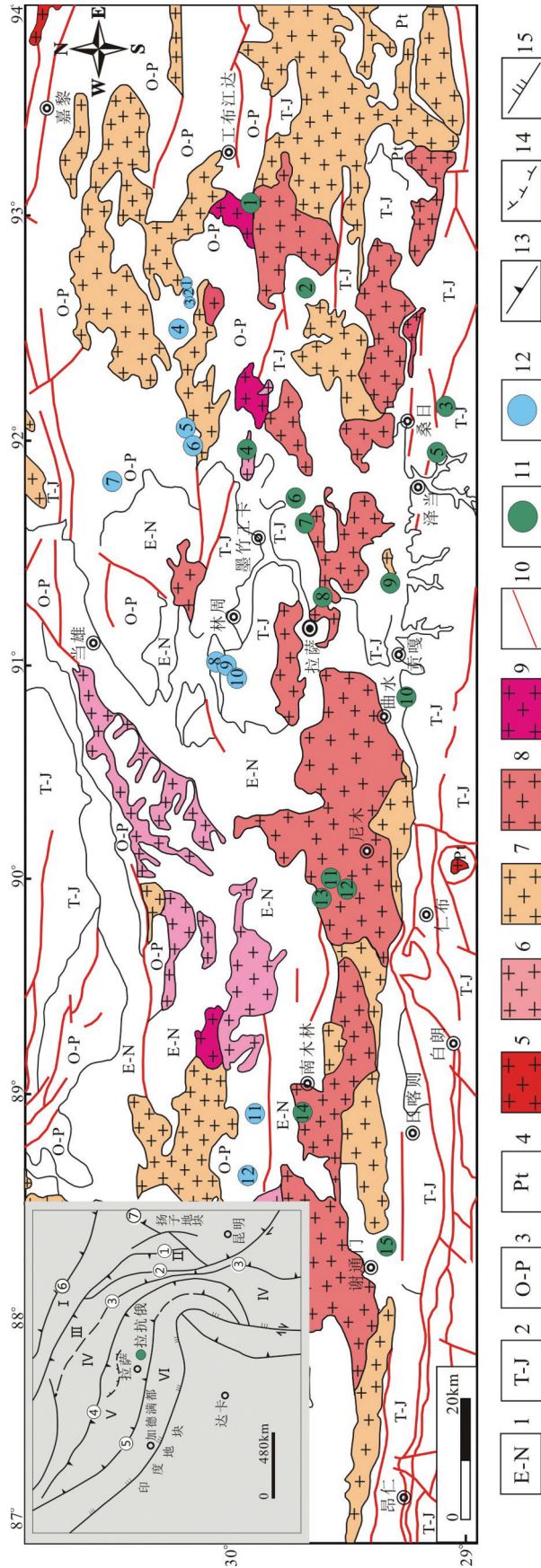


图1 西藏冈底斯带东段主要斑岩-矽卡岩矿床(点)分布图(据文献[18]修编)

1—新生代地层; 2—中生代地层; 3—古生代地层; 4—元古宙地层; 5—新近纪侵入体; 6—古近纪侵入体; 7—白垩纪侵入体; 8—侏罗纪侵入体; 9—三叠纪侵入体; 10—断层; 11—斑岩矿床(点); 12—矽卡岩矿床(点); 13—吹散子; 14—邦铺; 15—明则; 16—甲玛; 17—驱龙; 18—拉抗俄; 19—克鲁; 20—达布; 21—厅官; 22—岗讲; 23—冲江; 24—吉如; 25—雄村; 26—朱诺; 27—卡卡岩矿床(点); 28—亚莫拉; 29—沙让; 30—洞中拉; 31—洞中松多; 32—蒙亚啊; 33—列廷冈; 34—勒青拉; 35—新嘎果; 36—则学; 37—纳如松多; 38—板边带及俯冲方向; 39—洋壳冲推覆前缘; 40—主边界推覆断裂; 41—金沙江—哀牢山断裂; 42—澜沧江断裂; 43—印度河—雅鲁藏布江断裂; 44—昆南—玛沁断裂; 45—龙门山断裂; 46—可可西里—巴颜喀拉板片; 47—义敦—乡城板片; 48—喀喇昆仑—开岭—昌都板片; 49—羌塘—唐古拉—保山板片; 50—冈底斯—念青唐古拉—腾冲板片; 51—喜马拉雅板片

Fig. 1 The distribution of main porphyry-skarn deposits in the eastern Gangdise metallogenic belt (modified after reference [18])

1—Cenozoic strata; 2—Mesozoic strata; 3—Paleozoic strata; 4—Proterozoic strata; 5—Neogene intrusion; 6—Paleogene intrusion; 7—Jurassic intrusion; 8—Triassic intrusion; 9—Fault; 10—Porphyry deposit; 11—Tungshu; 12—Chuibai; 13—Chongmuda; 14—Bangpu; 15—Mingze; 16—Jiama; 17—Qulong; 18—Lakange; 19—Kenu; 20—Dabu; 21—Tinggang; 22—Dongzhongla; 23—Mengyaa; 24—Longmala; 25—Lawu; 26—Lietinggang; 27—Leqingla; 28—Xingguo; 29—Zexue; 30—Narusongduo; 31—Tanggu; 32—Gangjiang; 33—Chongjiang; 34—Jiru; 35—Xiongcu; 36—Zhunuo

Skarn deposit: 1—Yaguila; 2—Sharang; 3—Dongzhongla; 4—Dongzhongduo; 5—Mengyaa; 6—Longmala; 7—Lawu; 8—Lietinggang; 9—Leqingla; 10—Xingguo; 11—Zexue; 12—Narusongduo; 13—Terrane belt and subduction direction; 14—Subduction frontiers of oceanic crust; 15—Main overthrust fault; 16—Ganzi—Litang fault; 17—Jingshajiang—Aimaoshan fault; 18—Nanchangjiang fault; 19—Indianhe—Yaluzangbujiang fault; 20—Kunman—Maqin fault; 21—Longmenshan fault; 22—Kekexili—Bayankala terrane; 23—Yidun—Xiangchen terrane; 24—Kalakunlun—Kaixinling—Changdu terrane; 25—Qiangtang—Tanggula—Baoshan terrane; 26—Gandise—Nianqingtanggula—Tengchong terrane; 27—Himalayan terrane

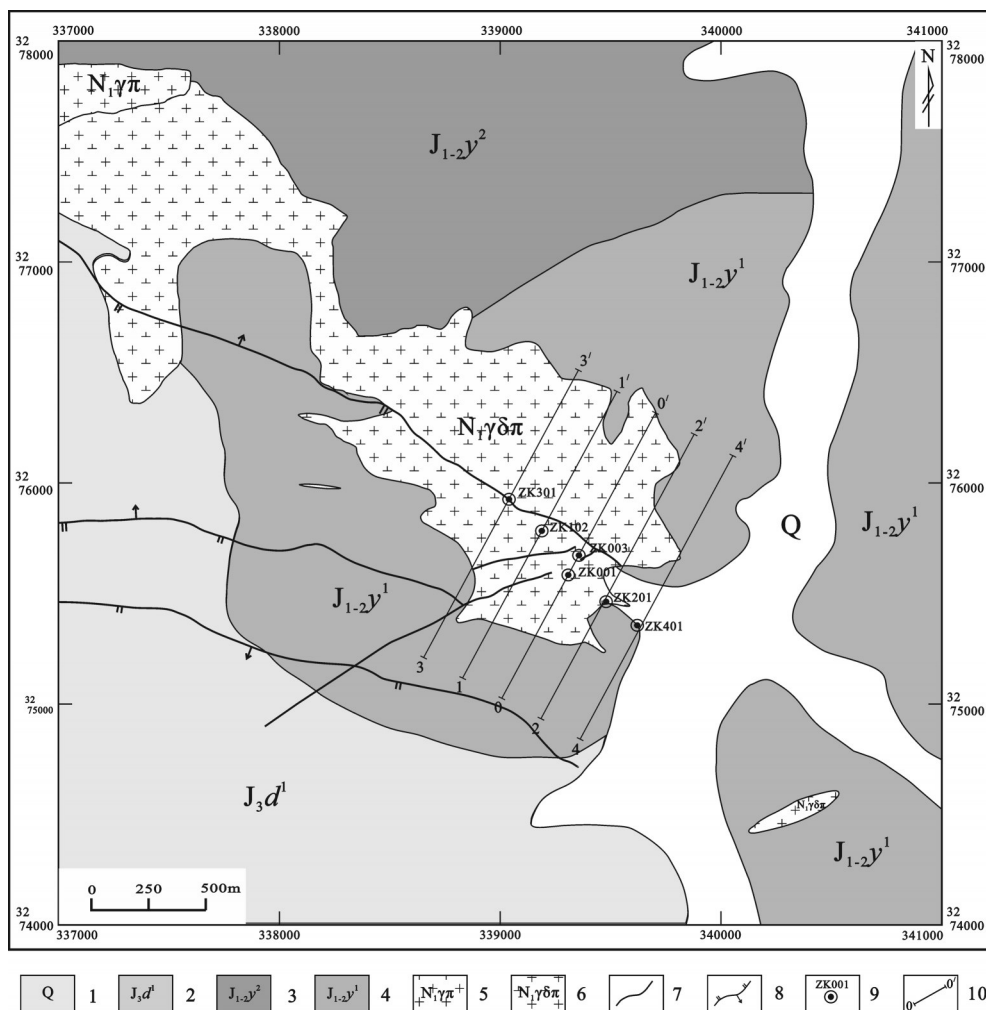


图2 拉抗俄矿区地质简图(据西藏自治区地质调查院,2013^①修编)

1—第四系残坡积物、冲洪积物;2—上侏罗统多底沟组一段;3—中下侏罗统叶巴组二段;4—中下侏罗统叶巴组一段;5—花岗斑岩;6—花岗闪长斑岩;7—地质界线;8—实测断层;9—钻孔及编号;10—勘探线及编号

Fig. 2 Simplified geological map of the Lakange ore district (modified after Tibet Institute of Geological Survey, 2013^①)

1—Quaternary residual, slope, alluvial and diluvial materials; 2— J_3d^1 ; 3— $J_{1-2}y^2$; 4— $J_{1-2}y^1$; 5—Granite porphyry; 6—Granodiorite porphyry; 7—Geological boundary; 8—Measured fault; 9—Drill hole and its serial number; 10—Exploration line and its serial number

3.2 分析测试方法

Re-Os 同位素测试在国家地质实验测试中心完成,测定仪器为美国 TJA 公司生产的电感耦合等离子体质谱仪 TAJ X-series ICP-MS。化学分离、ICP-MS 测定和数据处理遵照 Re-Os 同位素测试的实验流程与标准执行^[19-22],主要测试分析方法及流程简述如下:

(1)分解样品:准确称取适量的辉钼矿样品,通过长细颈漏斗加入到 Carius 管(一种高硼厚壁大玻

璃安瓿瓶)底部。同时,将液氮缓慢加入到有半杯乙醇的保温杯中,调节温度到 $-50 \sim -80^{\circ}\text{C}$ 。将已装好样品的 Carius 管放入该保温杯中,通过长细颈漏斗再将准确称取的 ^{185}Re 和 ^{190}Os 混合稀释剂加入到 Carius 管底部,然后再加入 4 mL 的 10 mol/L HCl 和 4 mL 的 16 mol/L HNO₃。等 Carius 管底部的溶液冰冻后,用丙烷氧气火焰将 Carius 管的细颈部分加热封好。将其放入两端带有带孔螺旋帽的不锈钢套管内。将此套管轻轻放入鼓风烘箱内,待回升到室温

①西藏自治区地质调查院. 西藏达孜县拉抗俄铜矿调查评价报告. (内部资料), 2010.

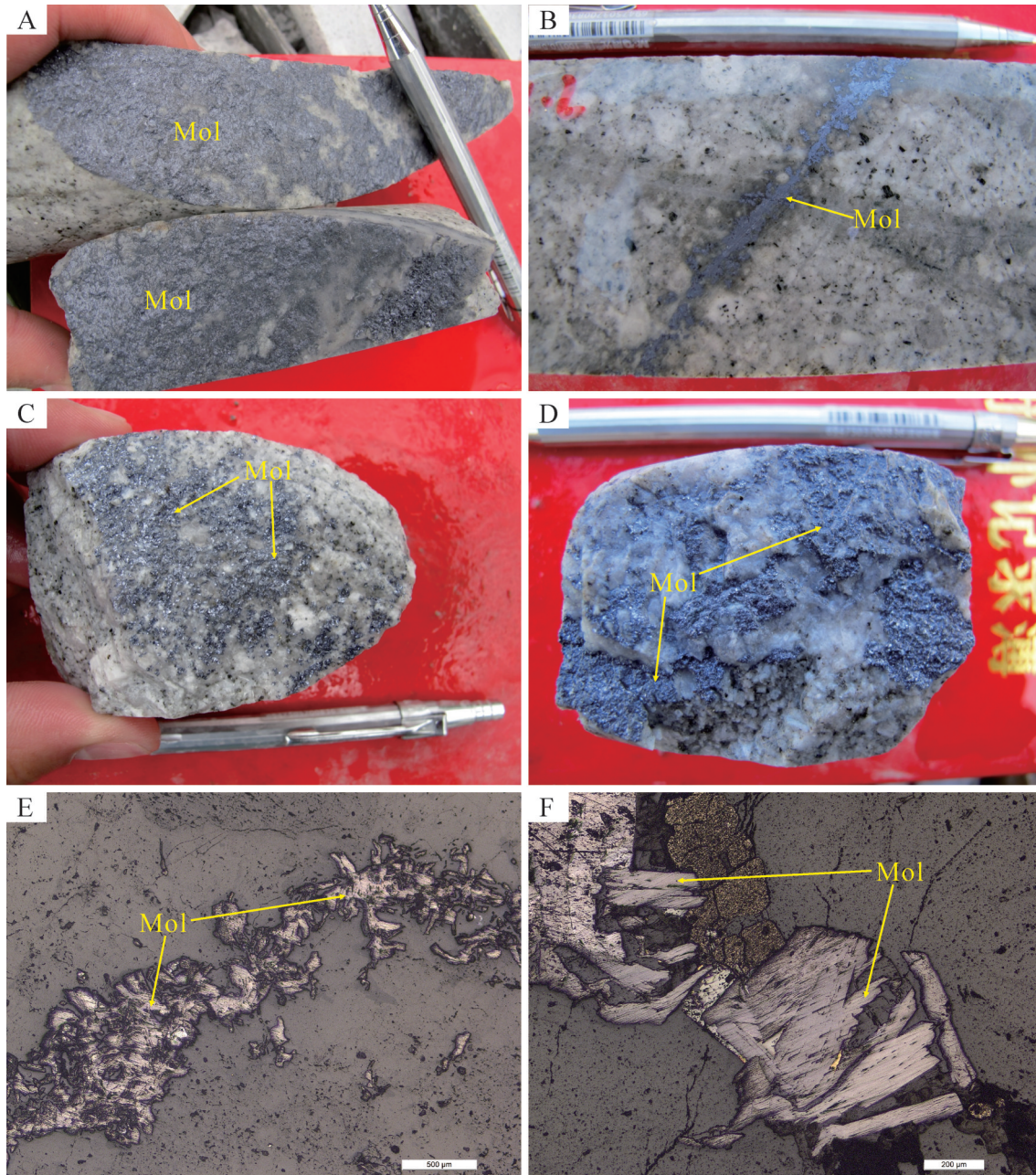


图3 拉抗俄矿床辉钼矿产出特征

A—ZK101-229.4m, 花岗闪长斑岩中辉钼矿呈细粒状、鳞片状产于裂隙面上; B—ZK101-338.2 m, 花岗闪长斑岩中辉钼矿呈脉状产出, 脉宽 2~4 mm; C—ZK101-524.8 m, 花岗闪长斑岩中辉钼矿呈鳞片状产于裂隙面上; D—ZK201-341 m, 花岗闪长斑岩中产于石英-辉钼矿脉中的细粒辉钼矿; E~F—辉钼矿镜下特征, 单偏光下反射色为灰白色, 反射多色性变化显著, 常呈蓝灰色, 具强非均质; Mol—辉钼矿

Fig. 3 Molybdenite characteristics in the Lakange deposit

A- ZK101-229.4m, molybdenite occurs in fracture surface of granodiorite porphyry in fine-grained and scaly forms; B-ZK101-338.2 m, molybdenite occurs in granodiorite porphyry as veins, whose width is 2-4 mm; C. ZK101-524.8 m, Molybdenite occurs in fracture surface of granodiorite porphyry in scaly form; D-ZK201-341 m, molybdenite occurs in granodiorite porphyry as quartz-molybdenite veins; E-F—Microscopic characteristics of molybdenite, the reflective color is grayish white under plain light, Changes in the reflection pleochroism are obvious, exhibiting bluish gray, with strong heterogeneity. Mol- Molybdenite

表1 取样位置及样品简要特征

Table 1 Sampling position and sample characteristics

样品编号	采样位置	样品描述	样品重量/mg
LKE-1	ZK101-123 m	辉钼矿以石英-辉钼矿脉产出, 颗粒细小	400
LKE-2	ZK201-180.8 m	辉钼矿以石英-辉钼矿脉产出, 颗粒细小, 多沿脉壁生长	260
LKE-3	ZK101-141.8 m	辉钼矿呈细小鳞片状产于花岗闪长斑岩裂隙面上	40
LKE-4	ZK101-187.4 m	辉钼矿以石英-辉钼矿脉产出, 颗粒细小	20
LKE-5	ZK201-180.5 m	辉钼矿以石英-辉钼矿脉产出, 颗粒细小	50
LKE-6	ZK101-161.1 m	辉钼矿呈细小鳞片状产于花岗闪长斑岩裂隙面上	70
LKE-7	ZK101-112.5 m	辉钼矿呈细小鳞片状产于花岗闪长斑岩裂隙面上	20
LKE-8	ZK101-58.2 m	辉钼矿以石英-辉钼矿脉产出, 颗粒细小, 多沿脉壁生长	70

后,再逐渐升温到230℃,保温24 h。在底部冷冻的情况下,打开Carius管,用40 mL水将管中溶液转入蒸馏瓶中。

(2)蒸馏分离钨:于105~110℃条件下蒸馏50 min,用10 mL水吸收蒸出的OsO₄。此水吸收液经适当稀释后,应用ICP-MS测定其Os同位素比值。将蒸馏残液倒入150 mL Teflon烧杯中待分离铼。

(3)萃取分离钨:将第一次蒸馏残液置于电热板上,加热烘干。为了降低酸度,需在近干时再加入少量水,如是两次后再加热近干。加入10 mL 5 mol/L NaOH,稍微加热,转为碱性介质。转入50 mL聚丙烯离心管内,经离心,取上清液转入120 mL Teflon分液漏斗中。加入10 mL丙酮,振荡5 min,萃取Re。静止分相,弃去水相。加2 mL 5 mol/L NaOH溶液到分液漏斗中,振荡2 min,洗去丙酮相中的杂质。弃去水相,排丙酮到150 mL已加有2 mL水的Teflon烧杯中。在电热板上,用50℃加热以蒸发丙酮。加热溶液至干。加入数滴浓硝酸和30%过氧化氢,加热蒸干以除去残存的钨。用数毫升稀HNO₃溶解残渣,稀释到硝酸浓度为2%。应用ICP-MS测定Re同位素比值。如含铼溶液中盐量超过1 mg/mL,需采用阳离子交换柱除去钠。

(4)质谱测定:对Re和Os的测定,均使用美国

TJA公司生产的TJA PQ EXCELL ICPMS测定同位素比值。对于Re:选择质量数185、187,用190监测Os。对于Os:选择质量数为186、187、188、189、190、192,用185监测Re。用TJA PQ EXCELL ICPMS测得的Re、Os和¹⁸⁷Os的空白值分别为(0.011±0.001)×10⁻⁹、(0.0002±0.0000)×10⁻⁹和(0.00011±0.00003)×10⁻⁹。

为了保证测试结果的可靠性,在本次测试过程中,分析了实验标准物质HLP的Re、Os和¹⁸⁷Os,测试结果和HLP样品的标准值(GBW04435)见表2。同时,为了保证设备无污染,还对实验空白水平进行了测定,测试结果见表3。由表2~3可见,本次测试结果相当可靠,因而,所获得的辉钼矿Re-Os数据亦相当精确。

4 测试结果

拉抗俄斑岩铜钼矿床8件辉钼矿样品的Re-Os同位素测试结果表4。样品中辉钼矿Re含量为343.6×10⁻⁶~835.7×10⁻⁶,平均557.8×10⁻⁶,Re与¹⁸⁷Os含量变化协调,给出8件矿石样品中辉钼矿的模式年龄为(13.20±0.20) Ma~(13.64±0.21) Ma,加权平均值为(13.38±0.15) Ma(图4),可见8件样品中辉钼矿年龄趋于一致。本次实验辉钼矿普通Os含量为-0.0387×10⁻⁹~0.0700×10⁻⁹,平均0.0139×10⁻⁹,可

表2 实验标准物质GBW04435(HLP)辉钼矿的Re-Os测试结果和标准值

Table 2 Certificated values and analytical data of Re-Os isotopes for standard sample molybdenite (GBW04435(HLP))

编号	原样名	Re/ (μg/g)		¹⁸⁷ Os/ (ng/g)		模式年龄/Ma	
		测定值	2σ	测定值	2σ	测定值	2σ
131023-23	HLP	255.4	2.0	590.3	4.9	220.3	3.1
GBW04435 (HLP)		283.8	6.2	659.0	14.4	221.4	5.6

表3 实验空白水平测定结果
Table 13 Analytical data of blank

编号	原样名	Re/ng		普 Os/ng		¹⁸⁷ Os/ng	
		测定值	2σ	测定值	2σ	测定值	2σ
131023-24	BK	0.0033	0.0001	0.00021	0.00004	0.00014	0.00003

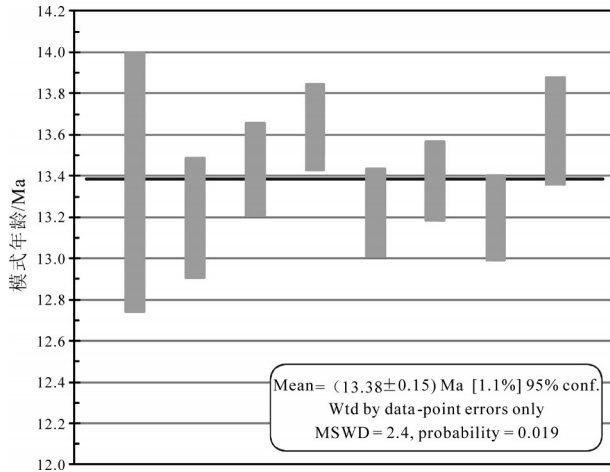


图4 拉抗俄铜钼矿床辉钼矿 Re-Os 同位素加权平均年龄
Fig.4 Weighted average Re-Os ages of molybdenites from the Lakange Cu-Mo deposit

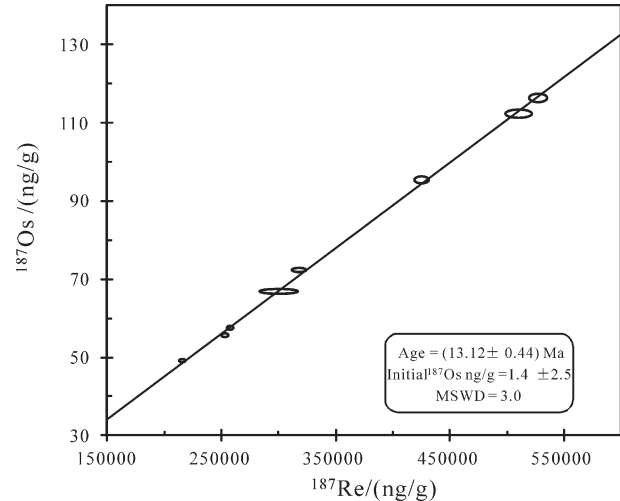


图5 拉抗俄铜钼矿床辉钼矿 Re-Os 同位素等时线年龄
Fig.5 Re-Os isochron ages of molybdenites from the Lakange Cu-Mo deposit

视为0,表明辉钼矿形成时几乎不含¹⁸⁷Os,辉钼矿中的¹⁸⁷Os系由¹⁸⁷Re衰变形成,符合Re-Os同位素体系模式年龄计算条件^[23],说明所获得模式年龄可反映辉钼矿的结晶时间。因此,可以通过辉钼矿中¹⁸⁷Re和¹⁸⁷Os的含量来计算出模式年龄 t 。计算公式: $t = (1/\lambda) \ln(^{187}\text{Os}/^{187}\text{Re} + 1)$,式中, λ 为¹⁸⁷Re衰变常数,其值为 $1.666 \times 10^{-11}/\text{a}$ ^[24-25]。

采用ISOPLOT软件^[26]对8件样品中辉钼矿数据进行等时线拟合(图5),获得Re-Os等时线年龄为 $(13.12 \pm 0.44)\text{Ma}$,MSWD=3.0,MSWD较小,模式年龄与等时线年龄基本一致,说明测试数据是可靠的,该等时线年龄代表了拉抗俄矿床的成矿年龄。

5 讨论

5.1 成矿时代

精确的成矿年代学是分析矿床成因、阐明成矿规律和理解成矿作用与地球动力学背景的关键^[27-28]。判别同位素等时线年龄是否具有地质意义的重要依据有3条:所测样品是否同时形成;所测样品是

否具有同样物质来源;同位素体系是否处于封闭状态^[29]。本次研究用于Re-Os同位素测年研究的辉钼矿样品满足上述条件。辉钼矿Re-Os测年已经被证明是一种研究金属内生矿床成矿年代十分有效的手段之一^[30]。在岩浆热液型矿床研究中,辉钼矿Re-Os年龄能够得到重现性较好的结果,并且与成矿岩体锆石U-Pb年龄相互印证。即使辉钼矿经历了后期热液变质作用,也不能破坏其Re-Os同位素体系的封闭性^[30],辉钼矿Re-Os测年的精确性已被广泛认可^[14,21,30,31-37]。结合矿床成矿地质特征,本文得到的拉抗俄铜钼矿床辉钼矿模式年龄平均 $(13.38 \pm 0.15)\text{Ma}$,等时线年龄为 $(13.12 \pm 0.44)\text{Ma}$,MSWD=3.0,两者在同一误差范围,代表了该矿床的成矿时代,说明其成矿作用发生于中新世。该年龄数据与矿区的含矿花岗闪长斑岩锆石U-Pb年龄 (13.58Ma) (未刊数据)数据相近,由此可知拉抗俄铜钼矿床成岩成矿几乎同时形成,均为喜山晚期岩浆活动的产物。因此,拉抗俄斑岩铜钼矿床形成年龄为 13.12Ma ,成矿时代为中新世。

表4 拉抗俄铜钼矿床辉钼矿 Re-Os 同位素测试数据
Table 4 Analytical data of Re-Os isotopes for the Lakange Cu-Mo deposit

样品编号	样重/g	Re/ ($\mu\text{g/g}$)		C 普 Os/ (ng/g)		$^{187}\text{Re}/$ ($\mu\text{g/g}$)		$^{187}\text{Os}/$ (ng/g)		模式年龄/Ma	
		测定值	2σ	测定值	2σ	测定值	2σ	测定值	2σ	测定值	2σ
ZK101-123	0.02075	476.7	21.6	-0.0387	-0.0210	299.6	13.6	66.74	0.55	13.37	0.63
ZK201-180.8	0.01001	810.7	15.1	0.0700	0.0603	509.6	9.5	112.1	0.9	13.20	0.29
ZK101-141.8	0.01018	676.2	7.6	0.0133	0.1488	425.0	4.8	95.14	0.87	13.43	0.22
ZK101-187.4	0.01011	343.6	3.5	0.0131	0.0295	216.0	2.2	49.08	0.39	13.64	0.21
ZK201-180.5	0.01026	837.5	9.4	0.0130	0.0874	526.4	5.9	116.0	0.9	13.23	0.21
ZK101-161.1	0.01001	409.9	3.4	0.0135	0.0151	257.6	2.1	57.42	0.48	13.38	0.19
ZK101-112.5	0.01009	402.4	4.0	0.0132	0.0445	252.9	2.5	55.61	0.48	13.20	0.20
ZK101-58.2	0.01003	505.7	7.6	0.0135	0.0302	317.9	4.8	72.14	0.59	13.62	0.26

注:Re、Os含量的不确定度包括样品和稀释剂的称量误差、稀释剂的标定误差、质谱测量的分馏校正误差、待分析样品同位素比值测量误差,置信水平95%;模式年龄的不确定度还包括衰变常数的不确定度(1.1%),置信水平95%; $\lambda(^{187}\text{Re}$ 衰变常数) $=1.666\times 10^{-11}/\text{a}^{[24-25]}$;Re-Os模式年龄按下列公式计算: $t=(1/\lambda)[\ln(^{187}\text{Os}/^{187}\text{Re}+1)]$ 。

5.2 Re含量与成矿物质来源

由于Re和Os的相容性不同^[38],导致在壳幔分异和地球化学循环过程中,不同地球化学储源库特别是地壳和地幔具有截然不同的Re、Os同位素特征。因此,Re-Os同位素体系不仅能够用来精确确定辉钼矿的形成时代,同时还能够指示成矿物质来源及成矿过程中不同物质混入情况^[32,36,39,40]。矿床内辉钼矿中的Re含量会随成矿物质来源深度的变化而变化,从幔源—壳幔混合源—壳源,相应的Re含量逐次呈数量级降低^[39-41]。其中,成矿物质为地幔来源的矿石中的辉钼矿Re含量范围为 $(n\times 10\sim n\times 10^3)\times 10^{-6}$,平均 $(n\times 10^2)\times 10^{-6}$;壳幔混合源的Re含量为 $(n\times 10)\times 10^{-6}$;而成矿物质为壳源的钼矿床,辉钼矿中Re含量最低,一般为 $n\times 10^{-6}$ 。从表4可见,拉抗俄铜钼矿床中辉钼矿Re含量变化范围为 $(343.6\sim 837.5)\times 10^{-6}$,平均 557.8×10^{-6} ,由此推断,拉抗俄铜钼矿床的成矿物质中有幔源成分的加入。这与拉抗俄矿床金属硫化物S、Pb同位素^[42]所得到的矿床成矿物质源区中有幔源物质加入的结果是相吻合的。

5.3 区域成矿对比

西藏冈底斯成矿带南北分别以雅鲁藏布江和班公湖—怒江缝合带为界^[43-44],受控于古特提斯洋和新特提斯洋发展演化,冈底斯成矿带经历了复杂的地质—构造—岩浆演化过程^[16,45-46],形成了巨量的矿产资源,从而使其成为中国乃至世界著名的铜铅锌钼金银成矿带。从冈底斯南缘雅鲁藏布江缝

合带向北至念青唐古拉北缘主要形成了以下5个重要的矿集区,分别是雄村斑岩型铜金矿集区;程巴—冲木达钼铜钨矿集区,包括程巴斑岩型钼铜矿床、努日矽卡岩型钨钼铜多金属矿床、冲木达矽卡岩型铜金矿床等;驱龙—甲玛—邦铺铜钼多金属矿集区,包括驱龙—知不拉斑岩—矽卡岩型铜钼矿床、甲玛斑岩—矽卡岩型铜钼铅锌多金属矿床、邦铺斑岩—矽卡岩型铜钼铅锌多金属矿床等;冲江—厅官铜矿集区,包括冲江斑岩铜矿床、厅官斑岩铜矿床、岗讲斑岩铜钼矿床、白容斑岩铜矿床等;蒙亚啊—亚贵拉铅锌钼多金属矿集区,包括亚贵拉矽卡岩型铅锌钼多金属矿床、沙让斑岩型钼矿床、洞中拉—洞中松多矽卡岩型铅锌矿床、龙马拉矽卡岩型铅锌矿床、蒙亚啊矽卡岩型铅矿床等。以上5个矿集区囊括了冈底斯成矿带东段初步查明或业已查明的主要大型—超大型矿床,也基本构筑了冈底斯成矿带东段斑岩型矿床的空间展布特征。

同时,从冈底斯南亚带到北亚带,重要矿床的成岩成矿时代(图6)的分布具有一定的规律性,具体表现在:(1)雄村铜金矿成岩年龄为164~174 Ma(锆石U-Pb法),成矿年龄在160~174 Ma^[47],显示冈底斯成矿带存在早中侏罗世与岛弧型斑岩有关的斑岩型铜金银矿床成矿亚系列。(2)冈底斯东段南部分布的努日、明则、冲木达和程巴等中到大型Mo(Cu)、Cu-Au±Mo、W-Cu-Mo矿床,构成斑岩—矽卡岩、热液脉状铜钼(金)或钼(铜)多金属成矿系列,

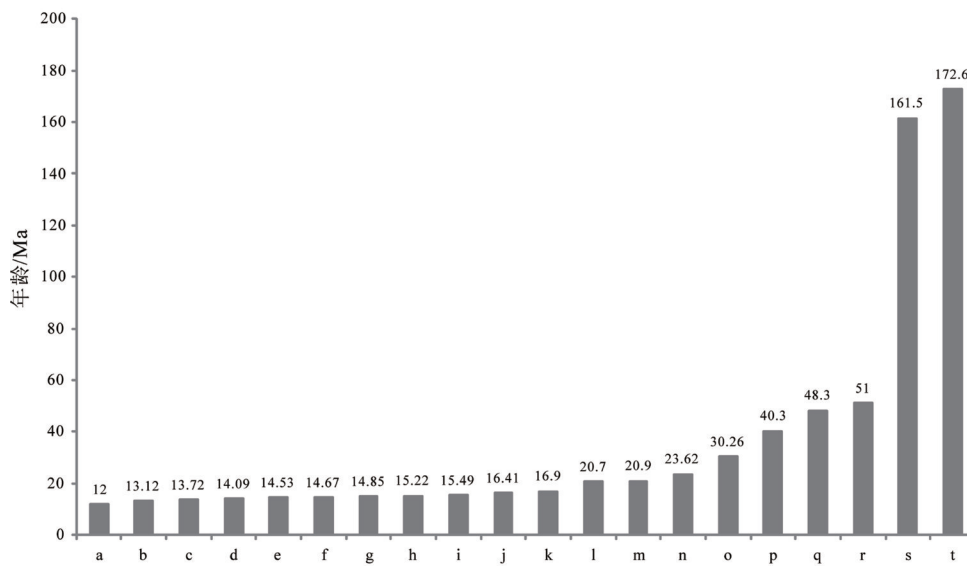


图6 冈底斯成矿带主要斑岩型矿床成矿年龄

a—白容,数据引自[6];b—拉抗俄(本文);c—朱诺,数据引自[7];d—邦铺,数据引自[34];e—达布,数据引自[52];f—南木,数据引自[52];g—冲江,数据引自[51];h—甲玛,数据引自[49];i—厅宫数据引自[52];j—驱龙,数据引自[50];k—知不拉,数据引自[53];l—吹败子,数据引自[52];m—汤不拉,数据引自[58];n—努日,数据引自[48];o—程巴,数据引自[48];p—冲木达,数据引自[56];q—吉如,数据引自[57];r—沙让,数据引自[54];s—雄村 I 号矿体,数据引自[59];t—雄村 II 号矿体,数据引自[60]

Fig. 6 Metallogenic ages of porphyry deposits in the Gangdise metallogenic belt

a—Bairong^[6]; b—Lakange, ; c—Zhunuo^[7]; d—Bangpu^[34]; e—Dabu^[52]; f—Nanmu^[52]; g—Chongjinag^[51]; h—Jiama^[49]; i—Tingong^[52]; j—Qulong^[50]; k—Zhibula^[53]; l—Chuibazi^[52]; m—Tangbula^[58]; n—Nuri^[48]; o—Chengba^[48]; p—Chongmuda^[56]; q—Jiru^[57]; r—Sharang^[54]; s—No. I orebody in Xiongcu^[59]; t—No. II orebody in Xiongcu^[60]

成岩成矿年龄在 40~20 Ma^[48]。(3)朱诺—普桑果—冲江—厅宫—白容—驱龙—甲玛—邦铺—线位于冈底斯成矿带东段的中亚带,成岩成矿年龄在 17~12 Ma。甲玛辉钼矿的 Re-Os 等时线年龄集中在 15 Ma 左右^[49];驱龙辉钼矿的 Re-Os 等时线年龄集中在 16 Ma 左右^[50-52];厅宫辉钼矿的 Re-Os 等时线年龄为 (15.49±0.36)Ma^[52];冲江辉钼矿的 Re-Os 等时线年龄为 14~14.85 Ma^[14,51];知不拉辉钼矿 Re-Os 同位素年龄为 (16.9±0.64)Ma^[53]、朱诺辉钼矿的 Re-Os 等时线年龄为 (13.72±0.62)Ma^[7];甲玛北部的邦铺多金属矿床中辉钼矿 Re-Os 等时线年龄为 (14.09±0.49)Ma^[34]。本文获得的拉抗俄铜钼矿床成矿年龄为 13.12 Ma,同样位于 17~12 Ma,这说明该区域成矿事件的发生具有高度的统一性和集中性,成矿作用受统一的区域性构造控制,暗示其有着相同的成矿地球动力学背景和相关的深部作用过程。(4)拉屋—蒙亚啊—洞中拉—沙让—亚贵拉矿集区构成了冈底斯成矿带的北亚带。主要代表了碰撞期早阶段的成矿,以斑岩型钼矿、矽卡岩型铅锌多金属矿为主。斑岩钼矿的成岩成矿年龄在 45~

66 Ma,沙让已经测定的含矿岩体锆石年龄为 46~52 Ma,辉钼矿成矿年龄为 51~53 Ma^[54]。高一鸣等^[55]测定了亚贵拉钼矿体中辉钼矿的 Re-Os 等时线年龄为 (64.89±0.89) Ma,平均的模式年龄为 (63.6±2.2)Ma。表明冈底斯成矿带北亚带存在与主碰撞期地壳增厚导致壳源的 S 型花岗岩有关的成矿系列,从岩体向外形成以 Mo、W、Pb-Zn-Cu-(Ag) 的元素分带或矿化分带,形成岩体中的斑岩钼矿、斑岩钨矿、矽卡岩型铅锌多金属矿。

5.4 成矿地球动力学背景

随着冈底斯 1:25 万区域地质调查的开展和完成,越来越多的研究表明,冈底斯带存在晚三叠世的岩浆岩。早—中侏罗世雅江洋开始向北俯冲,形成以叶巴组和雄村组为代表的岛弧火山岩^[16,45,47,61,62]。70~65 Ma 雅江洋开始闭合,印度—亚洲大陆开始碰撞^[45],冈底斯带形成同碰撞型林子宗组火山岩^[45,63]。中新世随着俯冲的印度大陆陆壳边缘岩石圈板片发生断离^[64-65],冈底斯发生东西向伸展,形成数量众多的壳幔混合来源的矿化斑岩侵位,其年龄集中于 20~13 Ma^[66]。

拉抗俄斑岩铜钼矿床形成于印度—亚洲大陆碰撞造山带的后碰撞伸展成矿构造背景。大陆碰撞的不同阶段受控于不同的深部过程,进而常常诱发不同的异常热能,驱动不同岩浆—热液成矿系统的发育。就本研究区域而言,在大陆岩石圈的俯冲前缘,由于板片断离^[67]甚至撕裂,导致软流圈上涌,诱发含大量地幔组分的新生镁铁质下地壳部分熔融,产生含Cu、富水、高 f_{O_2} 的花岗质岩浆熔体^[68],并与含Mo的长英质岩浆发生岩浆混合作用,形成规模巨大的含矿岩浆。在部分熔融过程中,下地壳源区的角闪石发生分解释放出大量流体,使岩浆熔体富水并保持高氧化状态,成为斑岩矿床的潜在含矿岩浆^[68]。这些高 f_{O_2} 的混合岩浆在浅部地壳发育形成大型岩浆房,并排泄出高氧逸度含Cu、Mo岩浆流体,形成斑岩岩浆—热液系统。由于地壳的强烈伸展,相继形成了一系列横切碰撞带的南北向正断层系统及其围陷的裂谷系和裂陷盆地^[66],为岩浆的浅成侵位提供了裂隙性通道。这些断裂系统的发育,加之冈底斯岩基中新世的快速抬升与剥蚀,导致长英质岩浆房破裂减压和含矿流体分凝,进而使岩浆和成矿流体沿发育的正断层及裂陷盆地系统浅成侵位和大量排放,发生大规模的岩浆—热液成矿作用,形成了包括甲玛、驱龙、邦铺以及本文的拉抗俄等众多的斑岩成矿系统。

6 结 论

(1)对拉抗俄铜钼矿床的8件辉钼矿样品进行了Re—Os同位素精确定年,得到的模式年龄变化范围为 $(13.20 \pm 0.20) \sim (13.64 \pm 0.21)$ Ma,其加权平均年龄为 (13.38 ± 0.15) Ma,等时线年龄为 (13.12 ± 0.44) Ma,代表了该矿床的成矿时代,成矿作用发生于中新世。

(2)拉抗俄铜钼矿床中辉钼矿Re含量为 $343.6 \times 10^{-6} \sim 835.7 \times 10^{-6}$,平均 557.8×10^{-6} ,由此可以推断,该矿床的成矿物质中有幔源成分的加入。

(3)拉抗俄铜钼矿床形成于印度—亚洲大陆碰撞造山带的碰撞伸展成矿构造背景,与区域成矿时代(17~12 Ma)基本一致。

致谢:野外工作得到西藏地质六队张焕彬队长、西藏地质调查院刘鸿飞院长等领导的大力支持;室内工作得到国家地质实验测试中心杜安道研

究员、屈文俊研究员和李超博士的指导和帮助;审稿过程中,相关专家指出了本文的许多不足并提出了宝贵的意见和建议,在此一并表示诚挚的谢意!

参考文献(References):

- [1] 唐菊兴,李志军,多吉,等. 西藏雄村铜金矿集区纽通门铜金矿床找矿勘查取得突破[J]. 矿床地质, 2010, 29(4): 727-729.
Tang Juxing, Li Zhijun, Duo Ji, et al. The prospecting exploration breakthrough of Niutongmen copper-gold deposit, Xiongcun copper-gold metallogenic district, Tibet[J]. Mineral Deposits, 2010, 29(4): 727-729(in Chinese with English abstract).
- [2] 唐菊兴,王登红,汪雄武,等. 西藏甲玛铜多金属矿床地质特征及其矿床模型[J]. 地球学报, 2010, 31(4): 495-506.
Tang Juxing, Wang Denghong, Wang Xiongwu, et al. Geological features and metallogenic model of the Jiama copper-polymetallic deposit in Tibet[J]. Acta Geoscientica Sinica, 2010, 31(4): 495-506 (in Chinese with English abstract).
- [3] 唐菊兴,邓世林,郑文宝,等. 西藏墨竹工卡县甲玛铜多金属矿床勘查模型[J]. 矿床地质, 2011, 30(2): 179-196.
Tang Juxing, Deng Shilin, Zheng Wenbao, et al. An exploration model for Jiama copper polymetallic deposit in Maizhokunggar County, Tibet[J]. Mineral Deposits, 2011, 30(2): 179-196(in Chinese with English abstract).
- [4] 郭文铂,郑文宝,唐菊兴,等. 西藏甲玛铜多金属矿床流体、成矿物质来源的地球化学约束[J]. 中国地质, 2014, 41(2): 510-528.
Guo Wenbo, Zheng Wenbao, Tang Juxing, et al. Geochemical constraints on the source of metallogenic fluids and materials in the Jiama polymetallic Cu deposit, Tibet[J]. Geology in China, 2014, 41(2): 510-528(in Chinese with English abstract).
- [5] 陈雷,秦克章,李光明,等. 西藏冈底斯南缘努日铜钼矿床地质特征与矽卡岩矿物学研究[J]. 矿床地质, 2012, 31(3): 417-437.
Chen Lei, Qin Kezhang, Li Guangming, et al. Geological and skarn mineral characteristics of Nuri Cu-W-Mo deposit in southeast Gangdese, Tibet[J]. Acta Geoscientica Sinica, 2012, 31(3): 417-437(in Chinese with English abstract).
- [6] 李金祥,秦克章,李光明,等. 冈底斯中段尼木斑岩铜矿田的K-Ar、 $^{40}\text{Ar}/^{39}\text{Ar}$ 年龄:对岩浆—热液系统演化和成矿构造背景的制约[J]. 岩石学报, 2007, 23(5): 953-966.
Li Jinxiang, Qin Kezhang, Li Guangming, et al. K-Ar and $^{40}\text{Ar}/^{39}\text{Ar}$ age dating of Nimu porphyry copper orefield in Central Gangdese: Constrains on magmatic-hydrothermal evolution and metallogenetic tectonic setting[J]. Acta Petrologica Sinica, 23(5): 953-966(in Chinese with English abstract).
- [7] 郑有业,多吉,王瑞江,等. 西藏冈底斯巨型斑岩铜矿带勘查研究最新进展[J]. 中国地质, 2007, 34(2): 324-334.
Zheng Youye, Duo Ji, Wang Ruijiang, et al. New Advances in the study of the gigantic Gangdese porphyry copper metallogenic zone, Tibet[J]. Geology in China, 2007, 34(2): 324-334(in Chinese with English abstract).

- English abstract).
- [8] 杨志明, 侯增谦, 宋玉财, 等. 西藏驱龙超大型斑岩铜矿床: 地质、蚀变与成矿[J]. 矿床地质, 2008, 27(3): 279-318.
Yang Zhiming, Hou Zengqian, Song Yucai, et al. Qulong superlarge porphyry Cu deposit in Tibet: Geology, alteration and mineralization[J]. Mineral Deposits, 2008, 27(3): 279-318(in Chinese with English abstract).
- [9] 王立强, 唐菊兴, 陈伟, 等. 西藏邦铺钼多金属矿床矽卡岩矿物学特征及其地质意义[J]. 中国地质, 2014, 41(2): 562-576.
Wang Liqiang, Tang Juxing, Chen Wei, et al. Mineralogical characteristics of skarn in the Bangpu Mo polymetallic deposit, Tibet, and their geological significance[J]. Geology in China, 2014, 41(2): 562-576(in Chinese with English abstract).
- [10] 高一鸣, 陈毓川, 唐菊兴, 等. 西藏工布江达县亚贵拉铅锌钼多金属矿床石英斑岩锆石 SHRIMP 定年及其地质意义[J]. 地质学报, 2009, 83(10): 1436-1444.
Gao Yiming, Chen Yuchuan, Tang Juxing, et al. SHRIMP U-Pb dating of zircon from quartz porphyry in the Yaguila Pb-Zn-Mo deposit, Gongbujiangda County, Tibet and its Geological Implication[J]. Acta Geologica Sinica, 2009, 83(10): 1436-1444(in Chinese with English abstract).
- [11] 李光明, 王高明, 高达发, 等. 西藏冈底斯铜矿资源前景与找矿方向[J]. 矿床地质, 2002, 21(S1): 144-147.
Li Guangming, Wang Gaoming, Gao Dafa, et al. Perspective of copper ore deposit and its exploration direction in Gangdese metallogenic belt, Tibet[J]. Mineral Deposits, 2002, 21(S1): 144-147(in Chinese with English abstract).
- [12] 唐菊兴, 陈毓川, 多吉, 等. 西藏冈底斯成矿带东段主要矿床类型、成矿规律和找矿评价[J]. 矿物学报, 2009, 29(S1): 476-478.
Tang Juxing, Chen Yuchuan, Duo Ji, et al. The main ore types, metallogenic regularities and prospecting evaluation in the east of Gangdese metallogenic belt, Tibet[J]. Acta Mineralogica Sinica, 2009, 29(S1): 476-478(in Chinese with English abstract).
- [13] 曲晓明, 侯增谦, 李振清. 冈底斯铜矿带含矿斑岩的⁴⁰Ar/³⁹Ar 年龄及地质意义[J]. 地质学报, 2003, 77(2): 245-252.
Qu Xiaoming, Hou Zengqian, Li Zhenqing. ⁴⁰Ar/³⁹Ar Ages of the ore-bearing porphyries of the Gangdese porphyry copper belt and their geological significances[J]. Acta Geologica Sinica, 2003, 77(2): 245-252(in Chinese with English abstract).
- [14] 侯增谦, 曲晓明, 王淑贤, 等. 西藏高原冈底斯斑岩铜矿带辉钼矿 Re-Os 年龄: 成矿作用时限与动力学背景应用[J]. 中国科学(D 辑), 2003, 33(7): 609-618.
Hou Zengqian, Qu Xiaoming, Wang Shuxian, et al. Re-Os dating of molybdenite from the Gangdese metallogenic belt, Tibet: applications of mineralization time and dynamic background[J]. Science in China(Series D), 2003, 33(7): 609-618(in Chinese).
- [15] 周详, 曹佑功. 西藏板块构造-建造图及说明书[M]. 北京: 地质出版社, 1984, 1-20.
Zhou Xiang, Cao Yougong. Tibet Plate Tectonics-construction Plans and Specifications[M]. Beijing: Geological Publishing House, 1984: 1-20.
- [16] 潘桂棠, 莫宣学, 侯增谦, 等. 冈底斯造山带的时空结构及演化[J]. 岩石学报, 2006, 22(3): 521-533.
Pan Guitang, Mo Xuanxue, Hou Zengqian, et al. Spatial-temporal framework of the Gangdese orogenic belt and its evolution[J]. Acta Petrologica Sinica, 2006, 22(3): 521-533(in Chinese with English abstract).
- [17] 杨德明, 李才, 王天武. 西藏冈底斯东段南北向构造特征与成因[J]. 中国区域地质, 2001, 20(4): 392-397.
Yang Deming, Li Cai, Wang Tianwu. Features and genesis of the north-south-trending tectonic belt in the eastern sector of the Gangdese Mountains, Tibet[J]. Regional Geology of China, 2001, 20(4): 392-397(in Chinese with English abstract).
- [18] 秦克章, 李光明, 赵俊兴, 等. 西藏首例独立钼矿: 冈底斯沙让大型斑岩钼矿的发现及其意义[J]. 中国地质, 2008, 35(6): 1101-1112.
Qin Kezhang, Li Guangming, Zhao Junxing, et al. Discovery of sharing large-scale porphyry molybdenum deposit, the first single Mo deposit in Tibet and its significance[J]. Geology in China, 2008, 35(6): 1101-1112(in Chinese with English abstract).
- [19] 杜安道, 何红蓼, 殷宁万, 等. 辉钼矿的铼-钨同位素地质年龄测定方法研究[J]. 地质学报, 1994, 68(4): 339-347.
Du Andao, He Hongliao, Yin Ningwan, et al. A study on the rhenium-osmium geochronometry of molybdenites[J]. Acta Geologica Sinica, 1994, 68(4): 339-347(in Chinese with English abstract).
- [20] 杜安道, 赵敦敏, 王淑贤, 等. Carius 管溶样和负离子热表面电离质谱准确测定辉钼矿铼-钨同位素地质年龄[J]. 岩矿测试, 2001, 20(4): 247-252.
Du Andao, Zhao Dunmin, Wang Shuxian, et al. Precise Re-Os dating for molybdenite by ID-NTIMS with Carius Tube sample preparation[J]. Rock and Mineral Analysis, 2001, 20(4): 247-252(in Chinese with English abstract).
- [21] 屈文俊, 杜安道. 高温密闭溶样电感耦合等离子体质谱准确测定辉钼矿铼-钨地质年龄[J]. 岩矿测试, 2003, 22(4): 254-257.
Qu Wenjun, Du Andao. Highly Precise Re-Os Dating of Molybdenite by ICP-MS with Carius Tube Sample Digestion[J]. Rock and Mineral Analysis, 2003, 22(4): 254-257(in Chinese with English abstract).
- [22] Du A D, Wu S Q, Sun D Z, et al. Preparation and certification of Re-Os dating reference materials: Molybdenite HLP and JDC[J]. Geostandard and Geoanalytical Research, 2004, 28(1): 41-52.
- [23] 蒋少涌, 杨竞红, 赵葵东, 等. 金属矿床 Re-Os 同位素示踪与定年研究[J]. 南京大学学报(自然科学版), 2000, 36(6): 669-677.
Jiang Shaoyong, Yang Jinghong, Zhao Kuidong, et al. Re-Os isotope tracer and dating methods in ore deposits research[J]. Journal of Nanjing University(Natural Sciences), 2000, 36(6): 669-677(in Chinese with English abstract).

- [24] Shen J J, Papanastassiou D A, Wasserburg G J. Precise Re–Os determinations and systematics of iron meteorites [J]. *Geochim. Cosmochim. Acta*, 1996, 60: 2887–2900.
- [25] Smoliar M I, Walker R J, Morgan J W. Re–Os ages of group II A, III A, IV A and VB iron meteorites[J]. *Science*, 1996, 271: 1099–1102.
- [26] Ludwig K R. User's Manual for Isoplot 3.00: A geochronological toolkit for Microsoft Excel[R]. Berkeley: Berkeley Geochronology Center Special Publication, 2003: 1–70.
- [27] Deng J, Wang Q F, Yang S J, et al. Genetic relationship between the Emeishan plume and the bauxite deposits in western Guangxi, China: Constraints from U–Pb and Lu–Hf isotopes of the detrital zircons in bauxite ores[J]. *Journal of Asian Earth Sciences*, 2010, 37(5/6): 412–424.
- [28] 孟健寅, 杨立强, 吕亮, 等. 滇西北红山铜钼矿床辉钼矿 Re–Os 同位素测年及其成矿意义[J]. *岩石学报*, 2013, 4: 1214–1222.
Meng Jianyin, Yang Liqiang, Lv Liang, et al. Re–Os dating of molybdenite from the Hongshan Cu–Mo deposit in Northwest Yunnan and its implications for mineralization[J]. *Acta Petrologica Sinica*, 2013, 4: 1214–1222(in Chinese with English abstract).
- [29] 聂凤军, 张万益, 杜安道, 等. 内蒙古小东沟斑岩型钼矿床辉钼矿铷–钬同位素年龄及地质意义[J]. *地质学报*, 2007, 81(7): 898–905.
Nie Fengjun, Zhang Wanyi, Du Andao, et al. Re–Os isotopic dating on molybdenite separates from the Xiaodonggou porphyry Mo deposit, Hexigten Qi, inner Mongolia[J]. *Acta Geologica Sinica*, 2007, 81(7): 898–905(in Chinese with English abstract).
- [30] 李超, 屈文俊, 杜安道, 等. 含有普通钬的辉钼矿 Re–Os 同位素定年研究[J]. *岩石学报*, 2012, 2: 702–708.
Li Chao, Qu Wenjun, Du Andao, et al. Study on Re–Os isotope in molybdenite containing common Os[J]. *Acta Petrologica Sinica*, 2012, 2: 702–708(in Chinese with English abstract).
- [30] Stein H J. Low–rhenium molybdenite by metamorphism in northern Sweden: Recognition, genesis, and global implications[J]. *Lithos*, 2006, 87: 300–327.
- [31] 黄勇, 唐菊兴, 丁俊, 等. 西藏雄村斑岩铜矿床辉钼矿 Re–Os 同位素体系[J]. *中国地质*, 2013, 40(1): 302–311.
Huang Yong, Tang Juxing, Ding Jun, et al. The Re–Os isotope system of the Xionggun porphyry copper–gold deposit, Tibet[J]. *Geology in China*, 2013, 40(1): 302–311(in Chinese with English abstract).
- [32] Mao J W, Wang Y T, Lehmann B, et al. Molybdenite Re–Os and albite $^{40}\text{Ar}/^{39}\text{Ar}$ dating of Cu–Au–Mo and magnetite porphyry systems in the Yangtze River valley and metallogenic implications[J]. *Ore Geology Reviews*, 2006, 29: 307–324.
- [33] 王登红, 陈郑辉, 陈毓川, 等. 我国重要矿产地成岩成矿年代学研究新数据[J]. *地质学报*, 2010, 84(7): 1030–1040.
Wang Denghong, Chen Zhenhui, Chen Yuchuan, et al. New Data of the Rock–Forming and Ore–Forming Chronology for China's Important Mineral Resources Areas[J]. *Acta Geologica Sinica*, 2010, 84(7): 1030–1040(in Chinese with English abstract).
- [34] Wang L Q, Chen Y C, Tang J X, et al. LA–ICP–MS zircon U–Pb dating of intermediate–acidic intrusive rocks and molybdenite Re–Os dating from the Bangpu Mo(Cu) deposit, Tibet and its geological implication[J]. *Acta Geologica Sinica*, 2012, 86(5): 1225–1240.
- [35] Stein H J, Morgan J W, Markey R J, et al. An introduction to Re–Os: What's in it for the mineral industry?[J]. *SEG Newsletter*, 1998, 32(1): 8–15.
- [36] Stein H J, Markey R J, Morgan J W, et al. The remarkable Re–Os chronometer in molybdenite: How and why it works[J]. *Terra Nova*, 2001, 13(6): 479–486.
- [37] Stein H J, Scherstén A, Hannah J L, et al. Subgrain–scale decoupling of Re and ^{187}Os and assessment of laser ablation ICP–MS spot dating in molybdenite[J]. *Geochimica et Cosmochimica*, 2003, 67: 3673–3686.
- [38] Martin C E, Carlson R W, Shirey S B, et al. Os isotopic variation in basalts from Haleakala Volcano, Maui, Hawaii: a record of magmatic processes in oceanic mantle and crust[J]. *Earth Planet. Sci. Lett.*, 1994, 128: 287–301.
- [39] Mao J W, Zhang Z C, Zhang Z H, et al. Re–Os isotopic dating of molybdenites in the Xiaoliugou W (Mo) deposit in the northern Qilian Mountains and its geological significance[J]. *Geochimica et Cosmochimica Acta*, 1999, 63(11/12): 1815–1818.
- [40] Mao J W, Du A D, Seltmann R, et al. Re–Os ages for the Shameika porphyry Mo deposit and the Lipovy Log rare metal pegmatite, central Urals, Russia[J]. *Mineralium Deposita*, 2003, 38: 251–257.
- [41] 王富春, 陈静, 谢志勇, 等. 东昆仑拉陵灶火钼多金属矿床地质特征及辉钼矿 Re–Os 同位素定年[J]. *中国地质*, 2013, 40(4): 1209–1217.
Wang Fuchun, Chen Jing, Xie Zhiyong, et al. Geological features and Re–Os isotopic dating of the Lalingzaohuo molybdenum polymetallic deposit in East Kunlun[J]. *Geology in China*, 2013, 40(4): 1209–1217(in Chinese with English abstract).
- [42] 曲晓明, 侯增谦, 李佑国. S、Pb 同位素对冈底斯斑岩铜矿带成矿物质来源和造山带物质循环的指示[J]. *地质通报*, 2002, 21(11): 768–776.
Qu Xiaoming, Hou Zengqian, Li Youguo. Implications of S and Pb isotopic compositions of the Gangdese porphyry copper belt for the ore–forming material source and material recycling within the orogenic belt[J]. *Geological Bulletin of China*, 2002, 21(11): 768–776(in Chinese with English abstract).
- [43] Chang K. Review of Sino–Tibetan: A Conspectus (Benedict). *JAS*, 1973, 32: 335–337.
- [44] Pearce J A, Mei H. Volcanic rocks for the 1985 Tibet Geotraverse Lhasa to Golmud[J]. *Phil. Trans. Roy. Soc. Lond. A*, 1988, 327:

- 203-213.
- [45] 莫宣学,董国臣,赵志丹,等. 西藏冈底斯带花岗岩的时空分布特征及地壳生长演化信息[J]. 高校地质学报, 2005, 11(3): 281-290.
- Mo Xuanxue, Dong Guochen, Zhao Zhidan, et al. Spatial and temporal distribution and characteristics of granitoids in the Gangdese, Tibet and implication for crustal growth and evolution[J]. Geological Journal of China Universities, 2005, 11(3): 281-290(in Chinese with English abstract).
- [46] 朱弟成,潘桂棠,王立全,等. 西藏冈底斯带侏罗纪岩浆作用的时空分布及构造环境[J]. 地质通报, 2008, 27(4): 458-466.
- Zhu Dicheng, Pan Guitang, Wang Liquan, et al. Spatial-temporal distribution and tectonic setting of Jurassic magmatism in the Gangdese belt, Tibet, China[J]. Geological Bulletin of China, 2008, 27(4): 458-468(in Chinese with English abstract).
- [47] 唐菊兴,黄勇,李志军,等. 西藏谢通门县雄村同金矿床元素地球化学特征[J]. 矿床地质, 2009, 28(1): 15-28.
- Tang Juxing, Huang Yong, Li Zhijun, et al. Element geochemical characteristics of Xiongcu Cu-Au deposit in Xaitongmon County, Tibet[J]. Mineral Deposits, 2009, 28(1): 15-28(in Chinese with English abstract).
- [48] 闫学义,黄树峰,杜安道. 冈底斯洋当大型钨铜钼矿 Re-Os 年龄及陆缘走滑转换成矿作用[J]. 地质学报, 2010, 84(3): 398-405.
- Yan Xueyi, Huang Shufeng, Du Andao. Re-Os ages of large tungsten, copper and molybdenum deposit in the Zetang orefield, Gangdese and marginal strike-slip transforming metallogenesis[J]. Acta Geologica Sinica, 2010, 84(3): 398-405(in Chinese with English abstract).
- [49] 应立娟,王登红,唐菊兴,等. 西藏甲玛铜多金属矿辉钼矿 Re-Os 定年及其成矿意义[J]. 地质学报, 2010, 84(8): 1165-1174.
- Ying Lijuan, Wang Denghong, Tang Juxing, et al. Re-Os Dating of Molybdenite from the Jiama Copper Polymetallic Deposit in Tibet and its Metallogenic Significance[J]. Acta Geologica Sinica, 2010, 84(8): 1165-1174(in Chinese with English abstract).
- [50] 孟祥金,侯增谦,高永丰,等. 西藏冈底斯成矿带驱龙铜矿 Re-Os 年龄及成矿学意义[J]. 地质论评, 2003, 49(6): 660-666.
- Meng Xiangjin, Hou Zengqian, Gao Yongfeng, et al. Re-Os dating for molybdenite from Qulong porphyry copper deposit in Gangdese metallogenic belt, Tibet and its metallogenic significance[J]. Geological Review, 2003, 49(6): 660-666(in Chinese with English abstract).
- [51] 芮宗瑶,侯增谦,曲晓明,等. 冈底斯斑岩铜矿成矿时代及青藏高原隆升[J]. 矿床地质, 2003, 22(3): 217-225.
- Rui Zongyao, Hou Zengqian, Qu Xiaoming, et al. Metallogenetic epoch of Gangdese porphyry copper belt and uplift of Qinghai-Tibet Plateau[J]. Mineral Deposits, 2003, 22(3): 217-225(in Chinese with English abstract).
- [52] 芮宗瑶,李光明,张立生,等. 西藏斑岩铜矿对重大地质事件的响应[J]. 地学前缘, 2004, 11(1): 145-152.
- Rui Zongyao, Li Guangming, Zhang Lisheng, et al. The response of porphyry copper deposits to important geological events in Tibet[J]. Earth Science Frontiers, 2004, 11(1): 145-152(in Chinese with English abstract).
- [53] 李光明,芮宗瑶,王高明,等. 西藏冈底斯成矿带甲马和知不拉铜多金属矿床的 Re-Os 同位素年龄及意义[J]. 矿床地质, 2005, 24(5): 482-489.
- Li Guangming, Rui Zongyao, Wang Gaoming, et al. Molybdenite Re-Os dating of Jiama and Zhibula polymetallic copper deposits in Gangdese metallogenic belt of Tibet and its significance[J]. Mineral Deposits, 2005, 24(5): 482-489(in Chinese with English abstract).
- [54] 唐菊兴,陈毓川,王登红,等. 西藏工布江达县沙让斑岩铜矿床辉钼矿铼-钨同位素年龄及其地质意义[J]. 地质学报, 2009, 83(5): 698-702.
- Tang Juxing, Chen Yuchuan, Wang Denghong, et al. Re-Os dating of molybdenite from the Sharang porphyry molybdenum deposit in Gongbo'gyamda County, Tibet and its geological significance[J]. Acta Geologica Sinica, 2009, 83(5): 698-702(in Chinese with English abstract).
- [55] 高一鸣,陈毓川,唐菊兴,等. 西藏工布江达地区亚贵拉铅锌铜矿床辉钼矿 Re-Os 测年及其地质意义[J]. 地质通报, 2011, 30(7): 1027-1036.
- Gao Yiming, Chen Yuchuan, Tang Juxing, et al. Re-Os dating of molybdenite from the Yaguila porphyry molybdenum deposit in Gongbo'gyamada area, Tibet, and its geological significance[J]. Geological Bulletin of China, 2011, 30(7): 1027-1036(in Chinese with English abstract).
- [56] 李光明,刘波,余宏全,等. 西藏冈底斯成矿带南缘喜马拉雅早期成矿作用——来自冲木达铜金矿床的 Re-Os 同位素年龄证据[J]. 地质通报, 2006, 12: 1481-1486.
- Li Guangming, Liu Bo, She Hongquan, et al. Early Himalayan mineralization on the southern margin of the Gangdese metallogenic belt, Tibet, China: Evidence from Re-Os ages of the Chongmuda skarn-type Cu-Au deposit[J]. Geological Bulletin of China, 2006, 25(12): 1481-1486(in Chinese with English abstract).
- [57] 张刚阳,郑有业,龚福志,等. 西藏吉如斑岩铜矿:与陆陆碰撞过程相关的斑岩成岩成矿时代约束[J]. 岩石学报, 2008, 24(3): 473-479.
- Zhang Gangyang, Zheng Youye, Gong Fuzhi, et al. Geochronologic constraints on magmatic intrusions and mineralization of the Jiru porphyry copper deposit, Tibet, associated with continent-continent collisional process[J]. Acta Petrologica Sinica, 2008, 24(3): 473-479(in Chinese with English abstract).
- [58] 王保弟,许继峰,陈建林,等. 冈底斯东段汤不拉斑岩 Mo-Cu 矿床成岩成矿时代与成因研究[J]. 岩石学报, 2010, 26(6): 1820-1832.

- Wang Baodi, Xu Jifeng, Chen Jianlin, et al. Petrogenesis and geochronology of the ore-bearing porphyritic rocks in Tangbula porphyry molybdenum-copper deposit in the eastern segment of the Gangdese metallogenic belt[J]. *Acta Petrologica Sinica*, 26(6): 1820-1832(in Chinese with English abstract).
- [59] 郎兴海, 唐菊兴, 陈毓川, 等. 西藏冈底斯成矿带南缘新特提斯洋俯冲期成矿作用: 来自雄村矿集区 I 号矿体的 Re-Os 同位素年龄证据[J]. *地球科学——中国地质大学学报*, 2012, 37(3): 515-525.
- Lang Xinghai, Tang Juxing, Chen Yuchuan, et al. Neo-Tethys mineralization on the southern Margin of the Gangdese metallogenic belt, Tibet, China: Evidence from Re-Os ages of Xiongacun orebody No. I [J]. *Earth Science—Journal of China University of Geosciences*, 2012, 37(3): 515-525(in Chinese with English abstract).
- [60] 郎兴海, 唐菊兴, 陈毓川, 等. 西藏谢通门县雄村斑岩型铜金矿集区 II 号矿体中辉钼矿 Re-Os 年代学及地质意义[J]. *矿物岩石*, 2010, 4: 55-61.
- Lang Xinghai, Tang Juxing, Chen Yuchuan, et al. Re-Os dating of molybdenite from orebody No. II of the Xiongacun porphyry copper-gold metallogenic district, Xietongmen, Tibet and its geological significance[J]. *J. Mineral. Petrol.*, 2010, 4: 55-61(in Chinese with English abstract).
- [61] Zhu D C, Pan G T, Chung S L, et al. SHRIMP zircon age and geochemical constraints on the origin of Lower Jurassic volcanic rocks from the Yeba Formation, southern Gangdese, south Tibet[J]. *International Geology Review*, 2008, 50: 442-471.
- [62] 唐菊兴, 黎风信, 李志军, 等. 西藏谢通门县雄村铜金矿主要地质体形成的时限: 锆石 U-Pb、辉钼矿 Re-Os 年龄的证据[J]. *矿床地质*, 2010, 29(3): 461-472.
- Tang Juxing, Li Fengxi, Li Zhijun, et al. Time limit for formation of main geological bodies in Xiongacun copper-gold deposit, Xietongmen County, Tibet: Evidence from zircon U-Pb ages and Re-Os age of molybdenite[J]. *Mineral Deposits*, 2010, 29(3): 461-472(in Chinese with English abstract).
- [63] 莫宣学, 赵志丹, 邓晋福, 等. 印度—亚洲大陆主碰撞过程的火山作用响应[J]. *地学前缘*, 2003, 10(3): 135-148.
- Mo Xuanxue, Zhao Zhidan, Deng Jinfu, et al. Response of volcanism to the India-Asia collision[J]. *Earth Science Frontiers*, 2003, 10(3): 135-148(in Chinese with English abstract).
- [64] Miller C, Schuater R, Klotzli U, et al. Post-collisional potassic and ultrapotassic magmatism in SW Tibet: Geochemical and Sr-Nd-Pb-O isotopic constraints for mantle source characteristics and petrogenesis[J]. *Journal of Petrology*, 1999, 40: 1399-1424.
- [65] Mahéo G, Guillot S, Blichert-Toft J, et al. A slab breakoff model for the Neogene thermal evolution of South Karakorum and South Tibet[J]. *Earth Science Letter*, 2002, 195: 45-58.
- [66] 侯增谦, 高永丰, 孟祥金, 等. 西藏冈底斯中新世斑岩铜矿带: 埃达克质斑岩成因与构造控制[J]. *岩石学报*, 2004, 20(2): 239-248.
- Hou Zengqian, Gao Yongfeng, Meng Xiangjin, et al. Genesis of adakitic porphyry and tectonic controls on the Gangdese Miocene porphyry copper belt in the Tibetan orogen[J]. *Acta Petrologica Sinica*, 20(2): 239-248(in Chinese with English abstract).
- [67] Hou Z Q, Gao Y F, Qu X M, et al. Origin of adakitic intrusives generated during mid-Miocene east-west extension in southern Tibet[J]. *Earth and Planetary Science Letters*, 2004, 220: 139-155.
- [68] 侯增谦. 大陆碰撞成矿论[J]. *地质学报*, 2010, 84(1): 30-58.
- Hou Zengqian. Metallogensis of continental collision[J]. *Acta Geologica Sinica*, 2010, 84(1): 30-58(in Chinese with English abstract).