

doi: 10.12029/gc20210421

郭盼, 陈超, 吴波, 陈小龙, 孔令耀, 刘成新. 2021. 西大别~2.0 Ga 变质花岗岩的发现及其 Hf 同位素特征[J]. 中国地质, 48(4): 1267–1279.

Guo Pan, Chen Chao, Wu Bo, Chen Xiaolong, Kong Lingyao, Liu Chengxin. 2021. The discovery of ~2.0 Ga metamorphosed granite in western Dabie Mountains and its Hf isotopic characteristics[J]. Geology in China, 48(4): 1267–1279(in Chinese with English abstract).

西大别~2.0 Ga 变质花岗岩的发现及其 Hf 同位素特征

郭盼¹, 陈超^{1,2}, 吴波¹, 陈小龙³, 孔令耀¹, 刘成新¹

(1. 湖北省地质调查院, 湖北 武汉 430034; 2. 中国地质大学(武汉), 湖北 武汉 430074;

3. 湖北省地质科学研究所, 湖北 武汉 430034)

摘要: 扬子陆块广泛存在 2.10~1.90 Ga 构造热事件的年代学信息, 然而在大别地区该时期的岩浆岩体尚未报道, 本文在野外地质调查的基础上, 对西大别金盘岩体的变质花岗岩开展了锆石年代学和 Hf 同位素分析。锆石 U–Pb 测年结果显示变质花岗岩的结晶年龄为 (2022 ± 17) Ma (MSWD=2.3), 代表了大别造山带古元古代的岩浆活动记录。锆石的 $\varepsilon_{\text{Hf}}(t)$ 值 (-10.6~ -7.6) 及其二阶模式年龄 (2.96~3.12 Ga) 表明该岩体来源于古老陆壳的再造。综合已有 Hf 同位素资料, 扬子陆块北缘广泛发育 2.95~3.18 Ga 太古宙地壳, 为该类花岗岩的岩浆形成提供了物源。金盘岩体形成于古元古代碰撞造山作用时期 (2.03~1.93 Ga), 可能指示了 Columbia 超大陆聚合在大别地区的响应。该~2.0 Ga 花岗岩体的识别, 为研究大别造山带早前寒武纪构造岩浆事件的演化序列提供了新的资料。

关键词: 扬子陆块; 大别; 古元古代; 变质花岗岩; Columbia 超大陆; 地质调查工程

中图分类号: P588.12; P597 文章标志码: A 文章编号: 1000–3657(2021)04–1267–13

The discovery of ~2.0 Ga metamorphosed granite in western Dabie Mountains and its Hf isotopic characteristics

GUO Pan¹, CHEN Chao^{1,2}, WU Bo¹, CHEN Xiaolong³, KONG Lingyao¹, LIU Chengxin¹

(1. Hubei Geological Survey, Wuhan 430034, Hubei, China; 2. China University of Geosciences, Wuhan 430074, Hubei, China;

3. Hubei Institute of Geosciences, Wuhan 430034, Hubei, China)

Abstract: Geochronological data of 2.10–1.90 Ga tectonic thermal events in the Yangtze block are widely documented, but the magmatic rocks of this period in the Dabie area have not been reported. On the basis of field geological survey, the geochronological and zircon Hf isotopes of the metamorphic granite from the Jinpan pluton in western Dabie Mountains were analyzed. U–Pb dating of magmatic zircons from the metamorphic granite yielded age of (2022 ± 17) Ma (MSWD = 2.3), which represents Paleoproterozoic magmatic event in the Dabie orogenic belt. The negative $\varepsilon_{\text{Hf}}(t)$ values (-10.6– -7.6) and $T_{\text{DM}2}$ ages (2.95–3.12 Ga) of zircons indicate that the Jinpan granite might be derived from the reconstruction of ancient continental crust. The previous Hf isotope results also indicate that the widely-distributed Archean continental crust (2.95–3.18 Ga) in the Yangtze Block provided material source for the

收稿日期: 2019–05–04; 改回日期: 2020–05–06

基金项目: 中国地质调查局项目 (DD20160030–09)、湖北省自然资源厅科研计划项目 (ETZ2017A04, ETZ201807A04) 和湖北省地质局科技项目 (KJ2019–2) 联合资助。

作者简介: 郭盼, 男, 1989 年生, 工程师, 主要从事基础地质调查与研究工作; E-mail: 450057590@qq.com。

magmatic evolution of the Jinpan metamorphic granite. The Jinpan pluton was formed in the period of Paleoproterozoic collisional orogeny (2.03–1.93 Ga), and it might be the response to the convergent of Columbia supercontinent. The identification of the ~2.0 Ga granite provides a new evidence for the evolution of Precambrian tectonic–magmatic events in the Dabie orogenic belt.

Key words: Yangtze block; Dabie; Palaeoproterozoic; metamorphic granite; Columbia supercontinent; geological survey engineering

About the first author: GUO Pan, male, born in 1989, engineer, engaged in basic geological survey and research; E-mail: 450057590@qq.com.

Fund support: Supported by the project of China Geological Survey(No. DD20160030–09), scientific research project of Hubei Natural Resources Department(No. ETZ2017A04、No.ETZ201807A04) and Hubei Geological Bureau science and technology project (No. KJ2019–2).

1 引言

扬子陆块是中国东部最重要的太古宙克拉通之一,其早期形成与演化对研究中国前寒武纪陆壳的形成、生长、再造过程具有重要意义,同时在全球性元古宙构造热事件响应中扮演着重要的角色。众所周知,华北陆块广泛出露太古宙岩石,记录着大量与Columbia超大陆汇聚和裂解相关的元古宙构造热事件(Zhai and Liu, 2003; Wan et al., 2006; Kusky et al., 2007; Xia et al., 2013; Liu et al., 2017; Wang et al., 2019)。相比而言,由于显生宙盖层影响,元古宙物质在扬子陆块范围出露十分有限。随着近年来的研究和发现,在扬子陆块不同地区的岩石中同样记录着大量2.10~1.90 Ga的年代学信息(Qiu et al., 2000; 吴元保等, 2003; 夏群科等, 2003; Bryant et al., 2004; Zhang et al., 2006a, b, c; Zheng et al., 2006; Liu et al., 2008a, 2010a; Liu et al., 2008b; Sun et al., 2008; Wu et al., 2008, 2009, 2012; Yin et al., 2013; Li et al., 2014; Guo et al., 2015; Han et al., 2017, 2018; Li et al., 2019; 陈超等, 2020),其中大量变质年龄记录所揭示的变质事件已经得到普遍认可,但代表同期岩浆活动的地质实体却少有发现,尤其在大别地区尚未报道,这可能与该区域岩石经历了多期次、强烈的变质和变形改造有关。

大别造山带地处中国中部,是中央造山带的重要组成部分,自太古宙以来经历了多期次、多阶段的碰撞—扩张—聚合的演化过程(Wu and Zheng, 2013; 刘晓春等, 2015)。以商麻断裂为界,将大别造山带划为东、西两部分,其中西大别以大悟断裂为界与秦岭—桐柏造山带相接(图1)。该区域广泛发育高压/超高压岩石,根据目前同位素年代学研究结果,其中大部分变质沉积岩中普遍含有古元古代

岩浆或变质锆石的年龄信息(Liu et al., 2010a),可能表明古元古代造山作用已由扬子陆块向北延伸至大别地区(Wu et al., 2008),并在扬子陆块早期基底形成与演化过程中起到了至关重要的作用。在野外地质调查工作的基础上,本文在湖北省大悟地区大别岩群中识别出一套变质花岗岩体,通过LA-ICP-MS锆石U-Pb测年以及Hf同位素分析,提供了一批新的数据,并结合区域上同期年代学资料来探讨该变质岩体的发现对扬子陆块北缘古元古代构造演化的意义。

2 地质背景及样品采集

金盘岩体出露于西大别地块西南缘大悟地区金盘水库一带,总面积约65 km²,总体沿北西西向呈带状展布(图2),1:25万麻城市幅认为其形成于新元古代^①。岩体周缘被南华系—震旦系所围限,地层岩性主要为白云钠长石英片岩、变粒岩、浅粒岩以及中厚层白云石大理岩、条带状白云石大理岩等^②。岩体与围岩均呈构造接触关系,大多以片(麻)理化构造接触为主,局部可见断层接触,原始接触界面经强烈改造已难以发现或识别。岩体边部可见绿泥黑云片岩捕虏体,可能为岩体侵位时的围岩捕虏体(图3b、c)。受动力变质作用的改造,岩体、捕虏体以及围岩地层均具有一定程度的变质,在汪家咀、金盘水库水坝一带见有典型的糜棱岩化特征:较为强烈的塑性变形导致长石变晶集合体多呈眼球状、拉长条带状,多发育不对称旋转碎斑、“多米诺骨牌”;云母呈暗色条带状集合体,绕长石定向分布,局部发育S-C组构(图3a、c)。

此次研究中用于锆石定年的样品(D3619/1)采于31°19′35.7″N, 114°05′18.3″E。岩石具糜棱结构、碎斑状结构,眼球状构造,主要矿物成分为钾长石

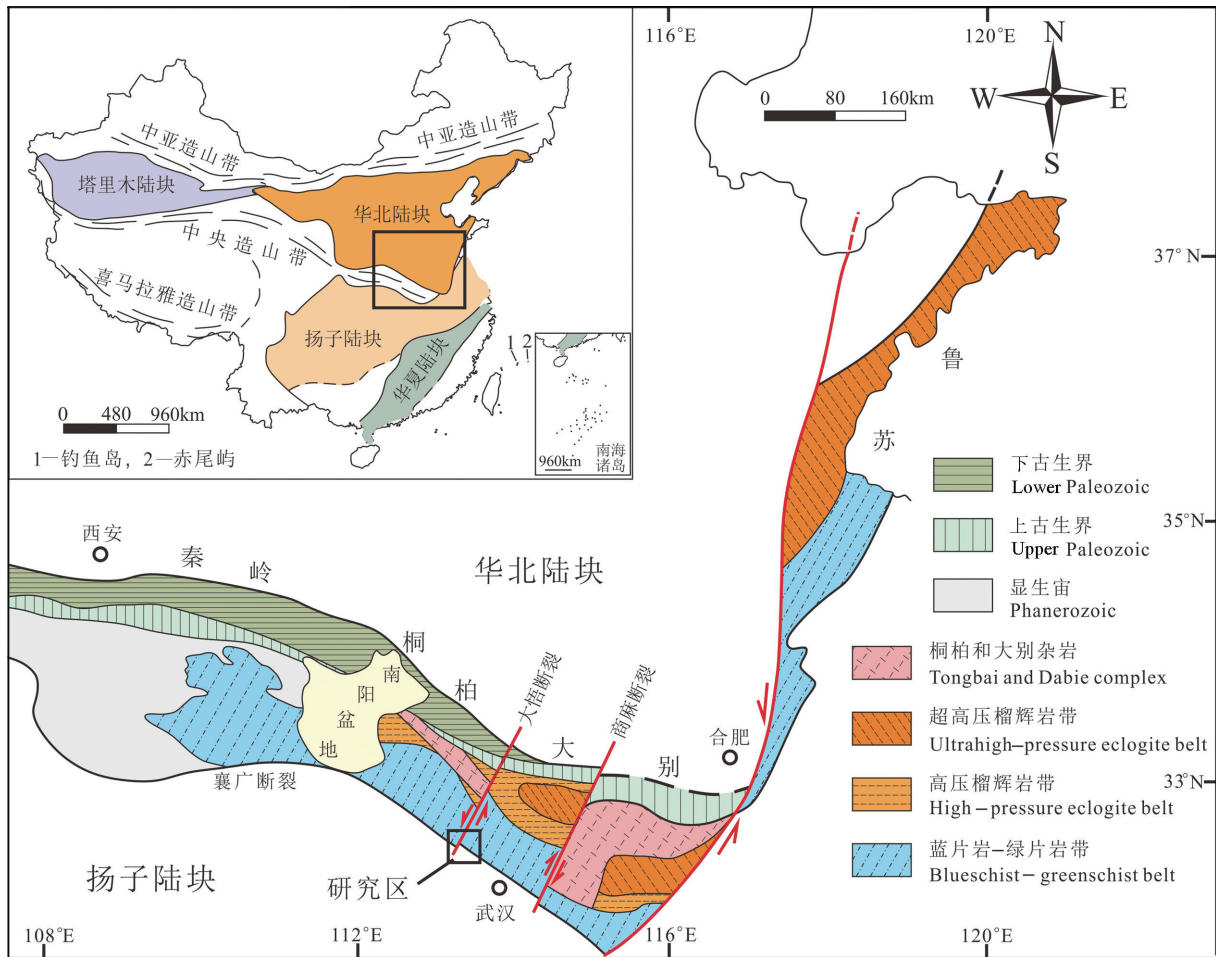


图1 秦岭—桐柏—大别—苏鲁造山带区域构造图及研究区位置
(据Liu et al., 2010a; Zhao and Cawood, 2012 修改)

Fig.1 Regional tectonic map of the Qinling-Tongbai-Dabie-Sulu orogenic belt and location of the study area
(modified from Liu et al., 2010a; Zhao and Cawood, 2012)

(27%~37%)、斜长石(15%~25%)、石英(20%~30%)、黑云母(15%~20%),含少量绿帘石、磁铁矿以及榍石。其中钾长石以条纹长石为主,多见条纹状双晶,可见格子双晶,呈棱角状、次棱角状外形,碎裂特征明显;斜长石以更长石或钠更长石为主,见紧密聚片双晶。岩石受到韧性动力变质作用,在定向应力作用下原岩碎裂的矿物呈定向排列,较多的长石碎块外形呈碎斑状、眼球状,石英呈丝带状重结晶,片状矿物黑云母集中成层,以网脉状形式分布于长英质矿物之间(图3d、e)。

3 样品加工及测试方法

锆石分选、制靶和反射光、透射光以及阴极发光照相均在南京宏创地质勘查技术服务有限公司完成,将样品粉碎至80~100目,利用常规的浮选和

电磁法分离出锆石,在双目镜下挑选出晶型较好的锆石制靶,阴极发光(CL)采用TESCAN MIRA3场发射扫描电镜和TESCAN公司阴极发光探头进行锆石内部结构分析研究。

锆石原位微区U-Pb同位素和微量元素组成分析在湖北省地质试验测试中心利用LA-ICP-MS完成,测试仪器采用美国Coherent Inc公司生产的GeoLasPro全自动版193 nm ArF准分子激光剥蚀系统(LA)和美国Agilent公司生产的7700X型电感耦合等离子质谱仪(ICP-MS)。分析采用的激光剥蚀孔径为32 μm,实验中用He作为剥蚀物质的载气。标准锆石91500作为外标,测试值为(1064±10)Ma; GJ-1为监控标样,测试值为(600±10)Ma。具体操作详见(周亮亮等, 2017)。

锆石Lu-Hf同位素分析在中国地质大学(武汉)

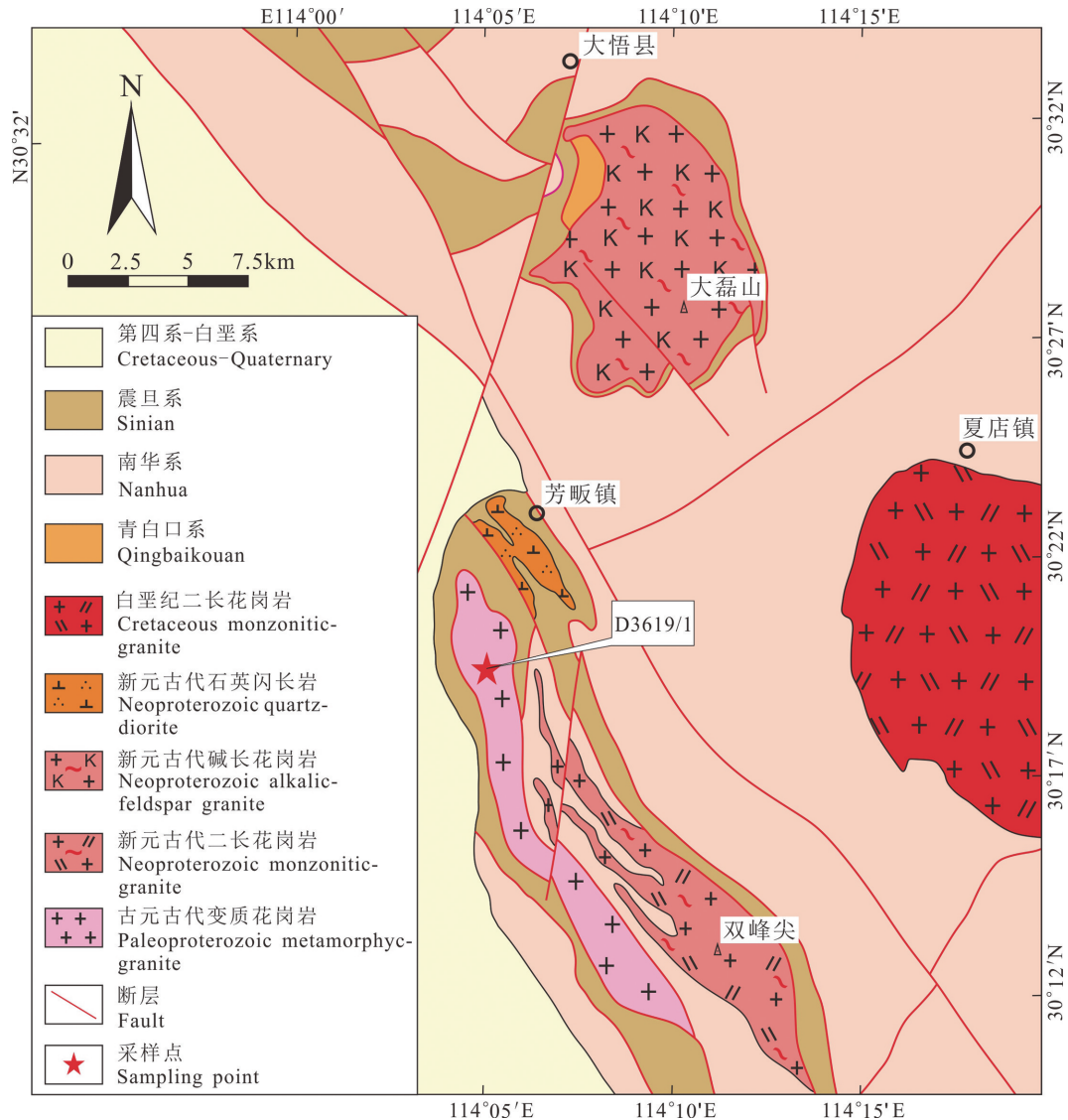


图2 金盘岩体地质简图及采样位置

Fig.2 Simplified geological map of the Jinpan pluton showing sampling location

地质过程与矿产资源国家重点实验室完成,实验室采用德国MicroLas公司生产的GeoLasPro2005激光剥蚀系统作为进样的采集系统,测试仪器为Neptune Plus型MC-ICP-MS。分析斑束为44 μm ,频率为10 Hz。实验过程通过分析标准锆石91500,TEMORA以及GJ-1进行数据质量监控,分析结果分别为 0.282290 ± 0.000023 ($n=4, 1\sigma$)、 0.282662 ± 0.000040 ($n=4, 1\sigma$)以及 0.282023 ± 0.000021 ($n=4, 1\sigma$),与推荐值($0.282307 \pm 0.000031, 2\sigma$; $0.282680 \pm 31, 2\sigma$; $0.282015 \pm 0.000019, 2\sigma$) (Wu et al., 2006)在误差范围内一致。Lu-Hf同位素体系计算时所用参数分别为 $(^{176}\text{Lu}/^{177}\text{Hf})_{\text{CHUR}}=0.0332$ 、 $(^{176}\text{Hf}/^{177}\text{Hf})_{\text{CHUR}}=0.282772$

(Blichert-Toft and Albarède, 1997); $(^{176}\text{Lu}/^{177}\text{Hf})_{\text{DM}}=0.0384$ 、 $(^{176}\text{Hf}/^{177}\text{Hf})_{\text{DM}}=0.28325$ (Vervoort and Blichert-Toft, 1999); $(^{176}\text{Lu}/^{177}\text{Hf})_{\text{CC}}=0.015$ (Griffin et al., 2002); $\lambda=1.867 \times 10^{-11} \text{ a}^{-1}$ (Albarède et al., 2006)。

采用ICPMSDataCal (V8.6)对锆石U-Pb及Lu-Hf同位素测试数据进行处理(Liu et al., 2010b, c),结果见表1和表2,其中U-Pb同位素数据利用Isoplot 3.6程序进行谐和图绘制和加权平均年龄计算(Ludwig, 2008)。

4 测试结果

样品D3619/1中的锆石颜色单一,以淡黄色为

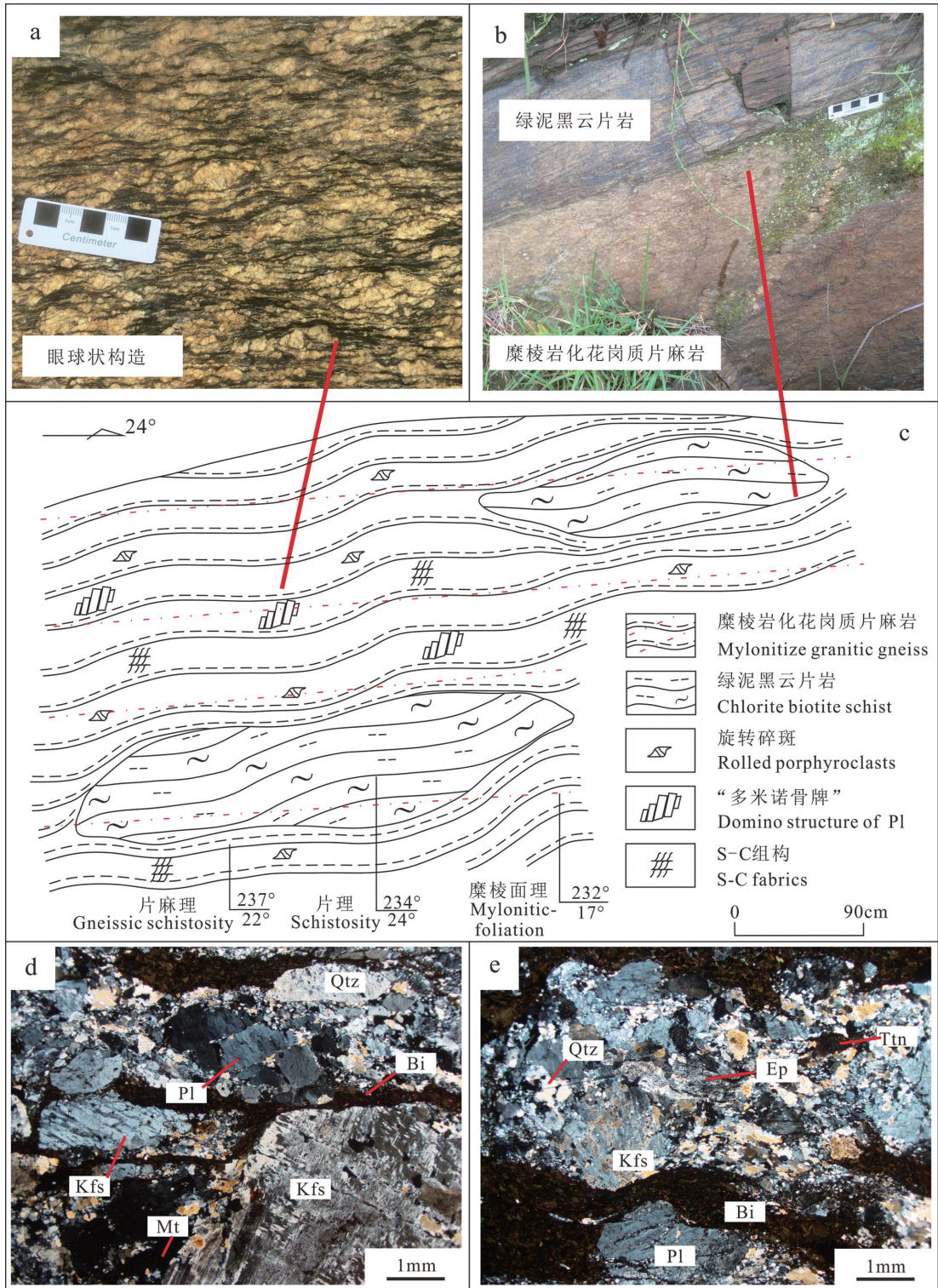


图3 金盘岩体野外产状和显微照片

a—糜棱岩化花岗质片麻岩眼球状构造特征;b—岩体与捕虏体接触关系;c—糜棱岩化花岗质片麻岩与绿泥黑云片岩捕虏体接触关系素描图;d、e—花岗质糜棱岩矿物共生关系;Kfs—钾长石;Pl—斜长石;Qtz—石英;Bi—黑云母;Mt—磁铁矿;Ep—绿帘石;Ttn—榍石

Fig.3 Field photographs and microphotographs of the Jinpan pluton

a—Photograph of augen structure of mylonitize granitic gneiss; b—Photograph of the contact relationship between pluton and xenolith; c—Sketch of the contact relationship between mylonitize granitic gneiss and chlorite biotite schist xenoliths; d, e—Paragenesis of mylonitize granitic gneiss;

Kfs—K-feldspar; Pl—Plagioclase; Qtz—Quartz; Bi—Biotite; Mt—Magnetite; Ep—Epidote; Ttn—Titanite

表1 金盘岩体样品D3619/1 LA-ICP-MS锆石U-Pb同位素测年结果

Table 1 LA-ICP-MS zircon U-Pb isotope date of the sample D3619/1 from the Jinpan pluton

分析点号	元素含量/ 10^{-6}		Th/U	同位素比值						年龄/Ma						谐和度/%
	^{232}Th	^{238}U		$^{207}\text{Pb}/^{206}\text{Pb}$	1σ	$^{207}\text{Pb}/^{235}\text{U}$	1σ	$^{206}\text{Pb}/^{238}\text{U}$	1σ	$^{207}\text{Pb}/^{206}\text{Pb}$	1σ	$^{207}\text{Pb}/^{235}\text{U}$	1σ	$^{206}\text{Pb}/^{238}\text{U}$	1σ	
D3619/1-01	59	77	0.77	0.12321	0.00197	5.85248	0.12237	0.34413	0.00655	2003	28	1954	18	1907	31	97
D3619/1-02	104	130	0.79	0.12304	0.00143	6.20042	0.08681	0.36497	0.00413	2067	21	2005	12	2006	20	99
D3619/1-03	34	39	0.86	0.12593	0.00198	6.23764	0.12420	0.35956	0.00582	2043	28	2010	17	1980	28	98
D3619/1-04	72	83	0.86	0.12555	0.00154	6.28250	0.09651	0.36254	0.00457	2037	22	2016	14	1994	22	98
D3619/1-05	45	51	0.89	0.12206	0.00177	6.14653	0.11048	0.36511	0.00522	1987	26	1997	16	2006	25	99
D3619/1-06	42	63	0.66	0.12351	0.00166	6.21549	0.10772	0.36484	0.00534	2009	24	2007	15	2005	25	99
D3619/1-07	35	46	0.76	0.12454	0.00182	6.20262	0.11024	0.36132	0.00519	2033	26	2005	16	1988	25	99
D3619/1-08	75	93	0.81	0.12210	0.00165	6.06553	0.09457	0.36033	0.00465	1987	24	1985	14	1984	22	99
D3619/1-09	49	55	0.90	0.12324	0.00182	6.22638	0.11578	0.36657	0.00572	2003	26	2008	16	2013	27	99
D3619/1-10	45	58	0.77	0.12240	0.00183	6.40581	0.12225	0.37934	0.00556	1992	27	2033	17	2073	26	98
D3619/1-11	35	45	0.78	0.12379	0.00160	6.26408	0.10877	0.36733	0.00581	2013	23	2013	15	2017	27	99
D3619/1-12	70	84	0.83	0.12307	0.00134	6.42203	0.10672	0.37743	0.00476	2067	19	2035	15	2064	22	98
D3619/1-13	43	53	0.81	0.12279	0.00161	6.50489	0.10934	0.38442	0.00532	1998	23	2047	15	2097	25	97
D3619/1-14	41	50	0.82	0.11965	0.00185	6.38883	0.10937	0.38837	0.00564	1951	32	2031	15	2115	26	95
D3619/1-15	79	104	0.76	0.12345	0.00153	6.56810	0.10806	0.38566	0.00521	2006	22	2055	15	2103	24	97
D3619/1-16	60	75	0.80	0.11974	0.00164	6.39458	0.11582	0.38728	0.00577	1954	24	2032	16	2110	27	96
D3619/1-17	33	43	0.78	0.12357	0.00187	6.26898	0.12756	0.36744	0.00546	2009	27	2014	18	2017	26	99
D3619/1-18	92	120	0.76	0.12363	0.00143	6.26943	0.09462	0.36762	0.00467	2010	21	2014	13	2018	22	99
D3619/1-19	84	104	0.81	0.12113	0.00127	6.26818	0.09651	0.37460	0.00472	1973	19	2014	14	2051	22	98
D3619/1-20	67	76	0.88	0.12269	0.00145	6.48811	0.09086	0.38352	0.00476	1995	20	2044	12	2093	22	97
D3619/1-21	129	202	0.64	0.12112	0.00115	6.35160	0.08130	0.37939	0.00385	1973	12	2026	11	2073	18	97
D3619/1-22	71	112	0.64	0.12189	0.00147	6.58163	0.11200	0.39055	0.00514	1984	21	2057	15	2125	24	96
D3619/1-23	93	112	0.83	0.12302	0.00146	6.31355	0.09559	0.37135	0.00449	2067	21	2020	13	2036	21	99
D3619/1-24	39	56	0.69	0.12445	0.00185	6.40345	0.11708	0.37364	0.00618	2021	27	2033	16	2047	29	99

主,基本呈半自形—自形长柱状,少数等轴粒状,大部分锆石晶形完整,少数呈破裂残缺状,长轴大小集中在100~210 μm ,长宽比一般为1:1~2.3:1。锆石阴极发光图像(图4)显示其绝大多数具有较好的振荡环带结构,其中一些具有继承锆石残留核;少量出现扇形分带结构,可能由于外部条件变化导致锆石结晶时各晶面生长速率不一致(Vavra G et al., 1996)。本次定年选择24颗锆石共测试24个分析点,所有分析点均选择同心振荡环带区域。由表1可知,它们的Th含量为 33×10^{-6} ~ 129×10^{-6} ,U含量为 39×10^{-6} ~ 202×10^{-6} ,Th/U比值为0.64~0.90(平均值0.79)均大于0.4,表现出岩浆锆石的特点(吴元保等,2004)。另外,由锆石稀土元素球粒陨石标准化分布型式图(图5b)可看出,岩体锆石LREE含量低,HREE富集,Ce正异常明显,同样显示岩浆成因(Hoskin, 2005; Pelleter et al., 2007)。部分锆石环带模糊,可能受后期变质重结晶的影响,但从谐和曲线图可知(图5a),大多分析点获得谐和年龄且位于谐和曲线之上及其附近,表明大多数锆石U-Pb体系仍保持封闭系统,仅个别发生了轻微的放射成因铅丢失。所有分析点构成不一致线与谐和曲线的

上交点年龄为 $(2007\pm 8)\text{Ma}$ (MSWD=0.86),取其中16个谐和分析点(谐和度为98%~99%)的 $^{207}\text{Pb}/^{206}\text{Pb}$ 加权平均年龄值为 $(2022\pm 17)\text{Ma}$ (MSWD=2.0),代表了岩体结晶年龄。另外,锆石中没有发现中生代年龄值,可能是早中生代板块俯冲变质作用以及燕山期岩浆作用对该岩体影响较小,锆石没有明显的增生,因此没有足够区域进行准确的定年。

Lu-Hf同位素方面,选择8颗锆石共测试8个分析点,数据结果见表2。它们 $^{176}\text{Hf}/^{177}\text{Hf}$ 比值为0.28121~0.281299,且具有负的 $\epsilon_{\text{Hf}}(t)$ 值特征,其范围为-10.6~-7.6(加权平均值为 -8.99 ± 0.66 ,MSWD=0.91),一阶亏损地幔模式年龄(T_{DM1})为2.69~2.80 Ga(平均值为2.74 Ga),二阶地壳模式年龄(T_{DM2})为2.96~3.12 Ga(平均值为3.04 Ga)。

5 讨 论

5.1 大别地区古元古代中期岩浆事件

尽管桐柏—大别造山带受多期变质改造较为强烈,古元古代年龄信息已在该地区不同类型的高压—超高压变质岩(如麻粒岩、榴辉岩、角闪岩、石英岩、变泥质岩以及长英质片麻岩等)中识别出来,

表2 金盘岩体样品 D3619/1 的锆石 Lu-Hf 同位素测定结果

Table 2 Lu-Hf isotope date of zircons from the sample D3619/1 from the Jinpan pluton

分析点号	¹⁷⁶ Hf/ ¹⁷⁷ Hf	1σ	¹⁷⁶ Lu/ ¹⁷⁷ Hf	1σ	¹⁷⁶ Yb/ ¹⁷⁷ Hf	1σ	t/Ma	ε _{Hf} (0)	1σ	ε _{Hf} (t)	1σ	T _{DM1} /Ma	T _{DM2} /Ma	f _{Lu/Hf}
D3619/1-01	0.281250	0.000019	0.000418	0.000004	0.013479	0.000146	2022	-53.8	0.8	-9.3	0.9	2749	3051	-0.99
D3619/1-06	0.281254	0.000022	0.000446	0.000012	0.015295	0.000260	2022	-53.7	0.9	-9.2	1.0	2746	3046	-0.99
D3619/1-11	0.281277	0.000020	0.000445	0.000008	0.014039	0.000342	2022	-52.9	0.9	-8.3	1.0	2714	3001	-0.99
D3619/1-13	0.281299	0.000018	0.000499	0.000005	0.016440	0.000224	2022	-52.1	0.8	-7.6	0.9	2688	2964	-0.98
D3619/1-15	0.281260	0.000018	0.000466	0.000002	0.014908	0.000162	2022	-53.5	0.8	-9.0	0.9	2738	3035	-0.99
D3619/1-17	0.281274	0.000021	0.000512	0.000005	0.016099	0.000148	2022	-53.0	0.9	-8.6	1.0	2723	3013	-0.98
D3619/1-18	0.281215	0.000017	0.000459	0.000002	0.015164	0.000118	2022	-55.1	0.8	-10.6	0.9	2799	3121	-0.99
D3619/1-20	0.281263	0.000026	0.000850	0.000007	0.027640	0.000267	2022	-53.4	1.1	-9.4	1.2	2762	3059	-0.97

其中大部分为变质年龄,主要集中在 2.03~1.94 Ga (夏科群等, 2003; Wu et al., 2008; Sun et al., 2008; Liu et al., 2008a, 2010a; 胡娟等, 2012)。部分岩浆锆石年龄信息则主要来自榴辉岩、石英岩以及长英质片麻岩的原岩, 年龄范围在 1.98~1.96 Ga (Wu et al., 2008; Liu et al., 2008a, 2010a; 胡娟等, 2012)。同时, 扬子陆块中部新元古代沉积岩中出现了大量 2.1~2.0 Ga 的碎屑锆石, 它们均显示出岩浆成因(余振兵, 2007; Liu et al., 2008b)。另外, 在扬子陆块各地出露的钾镁煌斑岩中同样发现有~2.0 Ga 的锆石捕虏晶 (Zheng et al., 2006), 甚至在中生代花岗岩中也有 (1929±25) Ma、(2023±41) Ma 以及 2091~2025 Ma 的继承锆石年龄信息 (Bryant et al., 2004; 王彦斌等, 2004)。以上证据表明桐柏一大别造山带可能存在 2.09~1.93 Ga 的岩浆事件。本文获得的金盘岩体侵位年龄为 (2022±17) Ma, 表明其形成于古元古

代中期, 进一步证明大别地区存在~2.0 Ga 的岩浆活动, 为扬子陆块北缘广泛发育约 2.08~1.93 Ga 的重要岩浆事件提供了新的年代学证据。

5.2 大别地区太古宙地壳生长

源自下地壳新生玄武质岩石再造所形成的锆石通常具有 ε_{Hf}(t) 正值特征 (吴福元等, 2007)。金盘岩体变质花岗岩的岩浆锆石具有明显的负 ε_{Hf}(t) 值特征, 其范围在 -10.9±0.9~-8.0±0.9, 表明该花岗质岩浆产自于古老地壳物质的重熔, 没有幔源新生地壳物质的加入。因此金盘岩体源区更可能来自于上地壳的火成岩或变沉积岩石。此外, 岩体的 ε_{Hf}(t) 值相对均一, 且野外地质调查中未发现其含有暗色微粒包体, 因此可排除岩浆混合源区。锆石二阶模式年龄 T_{DM2} 为 2964~3121 Ma (平均 3036 Ma), 表明其岩浆源区物质在~3.0 Ga 由亏损地幔分异而来。在扬子陆块内部, 崆岭杂岩出露有最为典型的太古

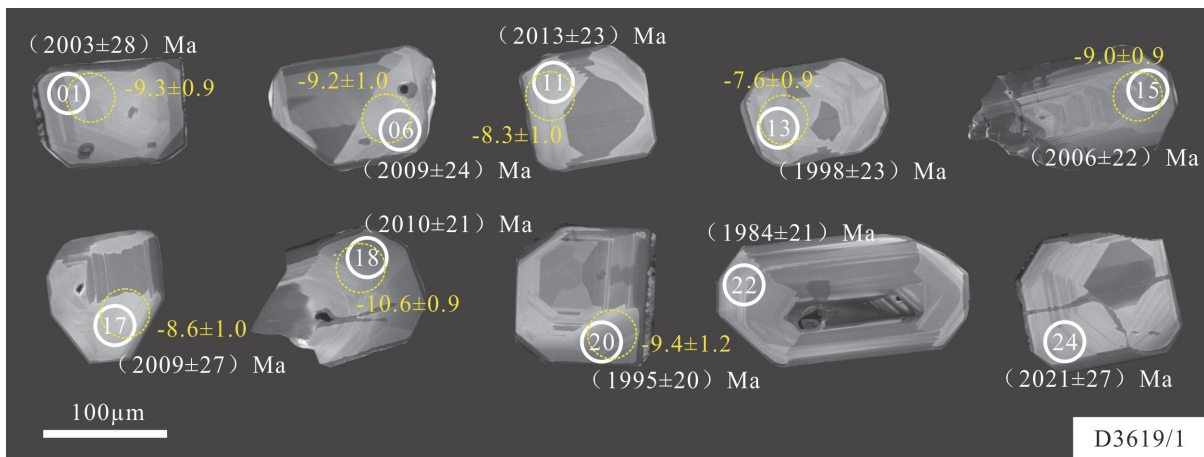


图4 金盘岩体代表性锆石阴极发光图

(白色实线圈和黄色虚线圈分别代表 U-Pb 和 Lu-Hf 同位素分析点, 白色和黄色数字分别表示锆石 ²⁰⁷Pb/²⁰⁶Pb 年龄值以及 ε_{Hf}(t) 值)

Fig.4 Cathodoluminescence (CL) images of representative zircons from the Jinpan pluton

(Solid white circles and dashed yellow circles represent the points for U-Pb and Lu-Hf isotope analysis, respectively. The numbers in white color refer to the zircon ²⁰⁷Pb/²⁰⁶Pb ages, and ε_{Hf}(t) values are indicated in yellow color)

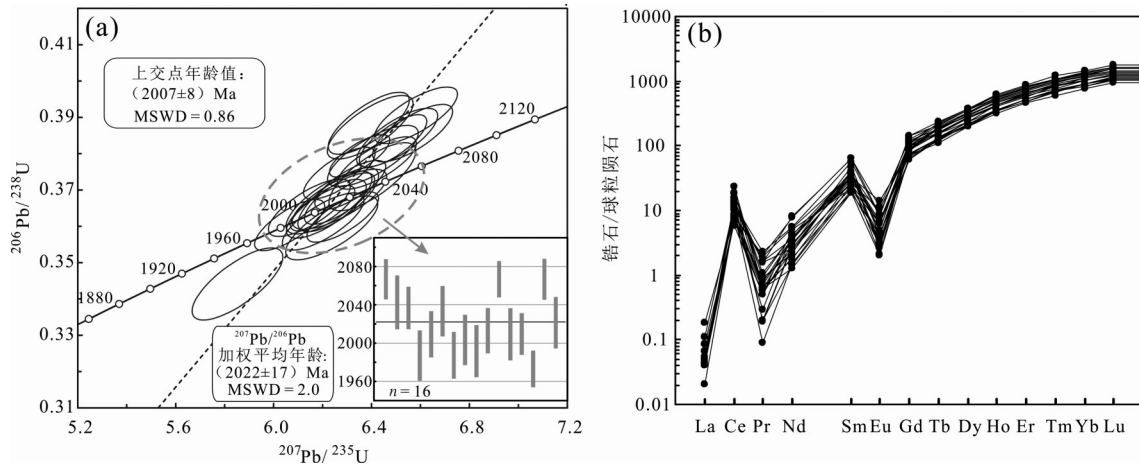


图5 金盘岩体锆石U-Pb年龄谐和图(a)和锆石REE球粒陨石标准化分布型式图(b,球粒陨石标准化数据引自 Sun and McDonough,1989)

Fig.5 U-Pb isotopic concordia diagram (a) and chondrite-normalized REE distribution patterns of zircons from the Jinpan pluton (b,the chondrite-normalized data are all from Sun and McDonough,1989)

宙基底物质,它记录着扬子克拉通早期地壳形成与演化的重要过程(Gao et al., 1999, 2011; Qiu et al., 2000; Zhang et al., 2006a,b,c)。前人对基底物质的碎屑锆石研究表明,3.8~3.2 Ga、3.00~2.95 Ga、2.70~2.60 Ga和2.7~2.6 Ga的年龄峰值记录了太古宙地壳4次重要的增生与再造事件(Zhang et al., 2006a;

Liu et al., 2008b; Gao et al., 2011; Chen et al., 2013)。其中最古老的锆石年龄~3.8 Ga以及~4.0 Ga的Hf模式年龄指示了扬子陆块最早的生长与再造时间可能达4.0 Ga和3.8 Ga(张少兵和郑永飞, 2007)。因此,与3.00~2.95 Ga峰值相对应,金盘岩体~3.0 Ga的Hf模式年龄可能代表了大别地区中大

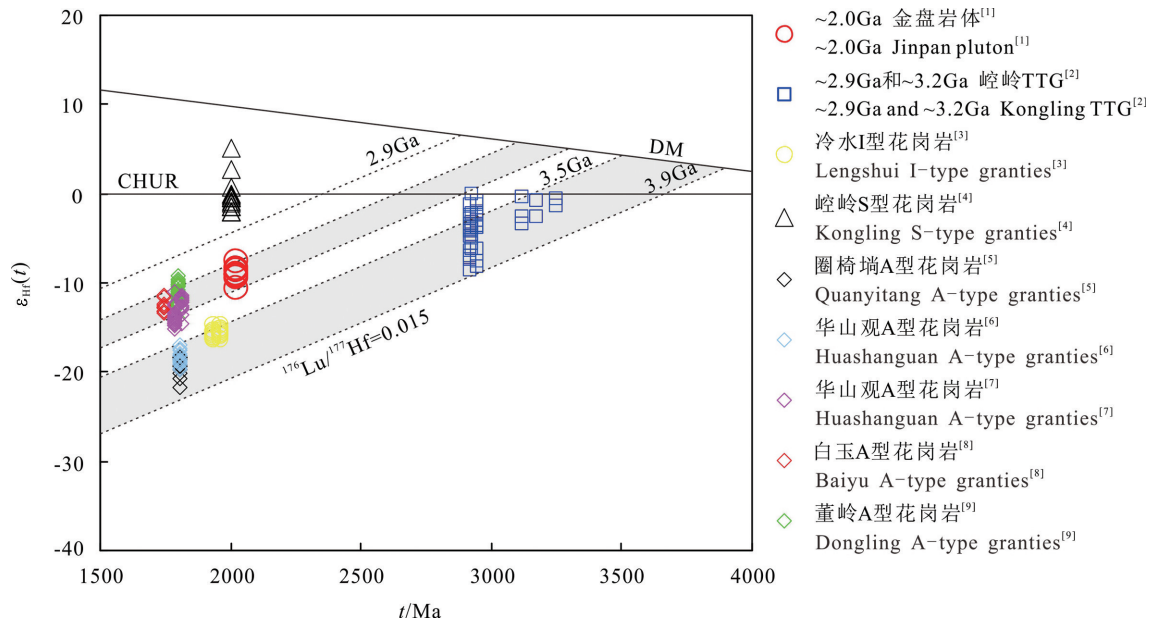


图6 $\epsilon_{Hf}(t)-t$ 同位素演化图解

(数据引自: [1] 本文数据; [2] Zhang et al., 2006c; [3] Wang et al., 2015; [4] Yin et al., 2013; [5] Peng et al., 2012; [6] Zhou et al., 2017; [7] 黄明达等, 2019; [8] 邓奇等, 2017; [9] Chen and Xing, 2016)

Fig.6 Hf isotope evolution diagram

(Data from : [1] This study; [2] Zhang et al., 2006c; [3] Wang et al., 2015; [4] Yin et al., 2013; [5] Peng et al., 2012; [6] Zhou et al., 2017; [7] Huang et al., 2019; [8] Deng et al., 2017; [9] Chen and Xing, 2016)

古代时期的一次地壳生长事件,进一步佐证了扬子陆块北缘太古宙基底物质的分布更加广泛,向北已延伸至大别造山带(Wu et al., 2008)。

另外,沿扬子陆块北缘广泛存在 2.0~1.8 Ga 的岩浆作用事件,如崆岭杂岩中识别出的 2.00~1.98 Ga 同碰撞 S 型花岗岩(Yin et al., 2013; Li et al., 2014),冷水杂岩中 1.96 Ga 同碰撞 I 型花岗岩(Wang et al., 2015)以及 1.85~1.79 Ga 后造山伸展环境形成的 A 型花岗岩(张丽娟等, 2011; Peng et al., 2012; Chen and Xing, 2016; Zhou et al., 2017; 邓奇等, 2017; 黄明达等, 2019)。结合已有 $\epsilon_{\text{Hf}}(t)$ 资料(图 6),金盘岩体变质花岗岩与碑坝白玉、董岭以及华山观(黄明达等, 2019)A 型花岗岩锆石具有类似的 $\epsilon_{\text{Hf}}(t)$ 演化模式,并表现出一致的二阶模式年龄

(2945~3183 Ma)。而冷水 I 型花岗岩则与圈椅堉和华山观(Zhou et al., 2017)A 型花岗岩表现出相似的 Hf 同位素演化趋势,且样品点均落入 3.2~2.9 Ga 崆岭 TTG 的演化区域,说明这些花岗岩类岩石可能源于其部分熔融(Wang et al., 2015),3527~3637 Ma 的二阶模式年龄则表明它们可能源自 > 3.5 Ga 时期相同的先存陆壳物质。由此可见,扬子陆块可能存在两套具有不同演化历史的太古宙陆壳物质,对比两类来源的岩体目前的分布范围,其中形成于 2945~3183 Ma 的太古宙陆壳物质可能分布更加广泛。

5.3 大别地区与 Columbia 超大陆聚合有关的岩浆事件

古元古代 Columbia 超大陆的存在已经得到较为普遍的认可,随着近年来对扬子陆块前寒武纪构

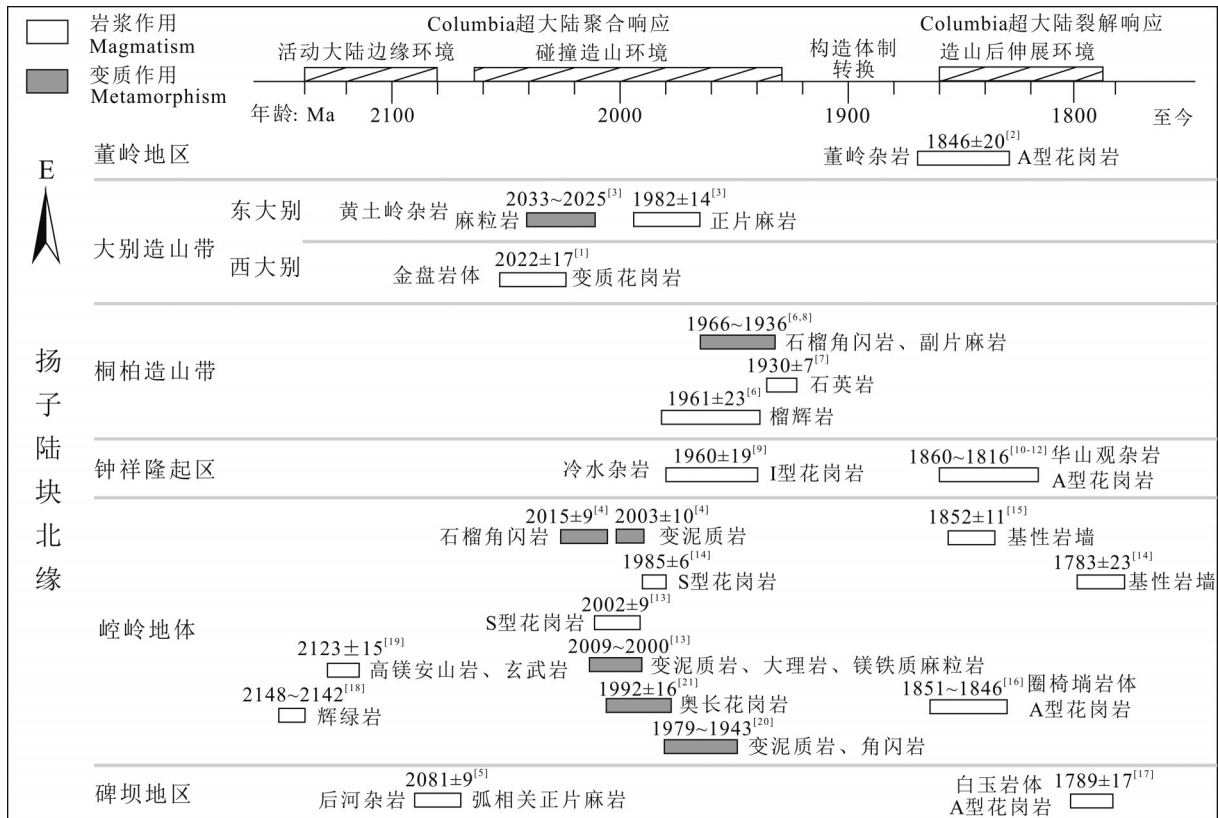


图7 扬子陆块北缘古元古代岩石的时空分布格局(单位:Ma)

(锆石 U-Pb 年龄数据引自: [1] 本文数据; [2] Chen and Xing, 2016; [3] Wu et al., 2008; [4] Wu et al., 2009; [5] Wu et al., 2012; [6] 胡娟等, 2012; [7] Liu et al., 2008a; [8] Liu et al., 2010a; [9] Wang et al., 2015; [10] Zhou et al., 2017; [11] 黄明达等, 2019; [12] 张丽娟等, 2011; [13] Yin et al., 2013; [14] Li et al., 2014; [15] 彭敏等, 2009; [16] Peng et al., 2012; [17] 邓奇等, 2017; [18] Han et al., 2017; [19] Han et al., 2018; [20] Zhang et al., 2006b; [21] Qiu et al., 2000)

Fig.7 Temporal and spatial distribution of Paleoproterozoic rocks in the northern Yangtze Block

(Data of zircon U-Pb isotope ages from: [1] This study; [2] Chen and Xing, 2016; [3] Wu et al., 2008; [4] Wu et al., 2009; [5] Wu et al., 2012; [6] Hu et al., 2012; [7] Liu et al., 2008a; [8] Liu et al., 2010a; [9] Wang et al., 2015; [10] Zhou et al., 2017; [11] Huang et al., 2019; [12] Zhang et al., 2011; [13] Yin et al., 2013; [14] Li et al., 2014; [15] Peng et al., 2009; [16] Peng et al., 2012; [17] Deng et al., 2017; [18] Han et al., 2017; [19] Han et al., 2018; [20] Zhang et al., 2006b; [21] Qiu et al., 2000)

造演化的研究工作不断深入,大量古元古代变质-岩浆事件逐渐被发现。与华北陆块类似,扬子陆块同样广泛存在2.1~1.9 Ga构造热事件的年代学记录(图7)。

Han et al.(2017)首次在北黄陵厘定出一套蛇绿混杂岩,识别出~2.15 Ga与俯冲相关的铁镁质-超铁镁质岩石,随后发现的~2.1 Ga高镁玄武岩和安山岩指示了古元古代存在安第斯山型大陆边缘环境(Han et al., 2018)。Wu et al.(2012)也报道了碑坝地区后河杂岩体中形成于(2081±9)Ma的花岗岩,指示了与弧相关的活动大陆边缘环境。同时,崆岭杂岩中出露的古元古代孔兹岩反映出先存的稳定大陆边缘环境(Zhang et al., 2006b; Wu et al., 2009; 邱啸飞等, 2017)。前人对扬子北缘的崆岭群太古宙变质基底和桐柏-大别造山带中包括(镁铁质)麻粒岩、变泥质岩、大理岩、角闪岩等高级变质岩以及新元古代沉积岩的年代学研究显示,它们的变质年龄集中在2.03~1.93 Ga(Zhang et al., 2006a, b, c; Sun et al., 2008; Liu et al., 2008a, b, 2010a; Wu et al., 2009; 赵国春, 2009; 2012; 胡娟等, 2012; 魏君奇和景明明, 2013; Li et al., 2014),表明扬子陆块存在一条古元古代的高级变质带。这些变质岩石记录了顺时针的 $P-T$ 演化轨迹,指示了一次陆-陆碰撞的大地构造背景(Wu et al., 2008, 2009; Yin et al., 2013)。同时,来自崆岭杂岩的S型花岗岩以及钟祥隆起区冷水杂岩的I型花岗岩侵位于2.00~1.96 Ga,代表了该时期重要的岩浆活动,它们均形成于碰撞环境,指示了扬子北缘古元古代发生的弧-陆或陆-陆碰撞造山事件(Yin et al., 2013; Li et al., 2014; Wang et al., 2015)。之后,在扬子陆块北缘发现的一系列A型花岗质岩石和伸展相关的基性岩脉(彭敏等, 2009; 张丽娟等, 2011; Peng et al., 2012; Chen and Xing, 2016; Zhou et al., 2017; 邓奇等, 2017; 黄明达等, 2019),被认为是在~1.9 Ga后扬子陆块北缘发生了构造体制转换的有力证据,即由碰撞造山环境转变为造山后伸展的构造背景。

综上所述,扬子陆块北缘与Columbia超大陆汇聚有关的碰撞造山事件主要发生于2.12~1.93 Ga,本文研究发现的2.0 Ga变质花岗岩同样形成于该时期,揭露了古元古代重要的岩浆事件,这可能代表了Columbia超大陆聚合在大别地区的响应。

6 结 论

(1)锆石 LA-ICP-MS U-Pb测年结果表明,金盘岩体侵位年龄为(2022±17)Ma,证明大别地区存在~2.0 Ga的岩浆活动。

(2) $\varepsilon_{\text{Hf}}(t)$ 值(-10.6~-7.6)及其二阶模式年龄(2.96~3.12 Ga)表明金盘岩体的变质花岗岩来源于古老陆壳物质的再造,结合已有 $\varepsilon_{\text{Hf}}(t)$ 值资料,扬子陆块北缘发育更为广泛的2.95~3.18 Ga太古宙陆壳物质。

(3)金盘岩体形成于古元古代碰撞造山作用时期(2.03~1.93 Ga),其代表的岩浆活动事件可能是Columbia超大陆聚合在大别地区的响应。

致谢:感谢刘彬副教授的技术指导、审稿专家提出的建设性意见及所有为本文提供帮助的同仁们!

注释

①湖北省地质调查院. 2002. 麻城市幅H50C001001 1:25万区域地质调查报告[R]. 武汉:湖北省地质调查院.

②湖北省地质调查院. 2016. 湖北1:5万大悟县幅(H50E003001)、丰店幅(H50E003002)、小河镇幅(H50E004001)、四姑墩幅(H50E004002)区域地质矿产调查报告[R]. 武汉:湖北省地质调查院.

References

- Albarède F, Scherer E E, Blichert-Toft J, Rosing M, Simionovici A, Bizzarro M. 2006. γ -ray irradiation in the early Solar System and the conundrum of the ^{176}Lu decay constant[J]. *Geochim. Cosmochim. Acta*, 70: 1261-1270.
- Blichert-Toft J, Albarède F. 1997. The Lu-Hf isotope geochemistry of chondrites and the evolution of the mantle-crust system[J]. *Earth Planet. Sci. Lett.*, 148: 243-258.
- Bryant D L, Ayers J C, Gao Shan, F.Miller C, Zhang H F. 2004. Geochemical, age, and isotopic constraints on the location of the Sino-Korean/Yangtze Suture and evolution of the Northern Dabie Complex, east central[J]. *Geol. Soc. Amer. Bull.*, 116.
- Chen Chao, Yuan Jinling, Guo Pan, Li Fangyun, Kong Lingyao, Yang Jinxiang, Mao Xinwu. 2020. ~2.0 Ga regional metamorphic event in Yangtze block and its heuristic significance to the differences in geological evolutionary between north and south Huangling[J]. *Geology in China*, 47(4): 899-913 (in Chinese with English abstract).
- Chen K, Gao S, Wu Y B, Guo J L, Hu Z C, Liu Y S, Zong K Q, Liang Z W, Geng X L. 2013. 2.6-2.7 Ga crustal growth in Yangtze craton, South China[J]. *Precambrian Research*, 224: 472-490.

- Chen Z H, Xing G F. 2016. Geochemical and zircon U–Pb–Hf–O isotopic evidence for a coherent Paleoproterozoic basement beneath the Yangtze Block, South China[J]. *Precambrian Research*, 279: 81–90.
- Deng Qi, Wang Zhengjiang, Wang Jian, Cui Xiaozhuang, Ma Long, Xiong Xiaohui. 2017. Discovery of the Baiyu ~1.79 Ga A–type granite in the Beiba area of the northwestern margin of Yangtze block: Constrains on tectonic evolution of South China[J]. *Acta Geologica Sinica*, 91(7): 1454–1466(in Chinese with English abstract).
- Gao S, Ling W L, Qiu Y M, Lian Z, Hartmann G, Simon K. 1999. Contrasting geochemical and Sm–Nd isotopic compositions of Archean metasediments from the Kongling high–grade terrain of the Yangtze craton: Evidence for cratonic evolution and redistribution of REE during crustal anatexis[J]. *Geochim. Cosmochim. Acta*, 63(s13/14): 2071–2088.
- Gao S, Yang J, Zhou L, Li M, Hu Z C, Guo J L, Yuan H L, Gong H J, Xiao G Q, Wei J Q. 2011. Age and growth of the Archean Kongling terrain, south China, with emphasis on 3.3 Ga granitoid gneisses[J]. *American Journal of Science*, 311(2): 153–182.
- Griffin W L, Wang X, Jackson S E, Pearson N J, O’Reilly S Y, Xu X S, Zhou X M. 2002. Zircon chemistry and magma mixing, SE China: In–situ analysis of Hf isotopes, Tonglu and Pingtan igneous complexes[J]. *Lithos*, 61: 237–269.
- Guo J L, Wu Y B, Gao S, Jin Z M, Zong K Q, Hu Z C, Chen K, Chen H H, Liu Y S. 2015. Episodic Paleoproterozoic–Paleoproterozoic (3.3–2.0 Ga) granitoid magmatism in Yangtze Craton, South China: Implications for late Archean tectonics[J]. *Precambrian Research*, 270: 246–266.
- Han Q S, Peng S B, Kusky T, Polat A, Jiang X F, Cen Y, Liu S F, Deng H. 2017. A Paleoproterozoic ophiolitic mélange, Yangtze craton, South China: Evidence for Paleoproterozoic suturing and microcontinent amalgamation[J]. *Precambrian Research*, 293: 13–38.
- Han Q S, Peng S B, Polat A, Kusky T, Deng H, Wu T Y. 2018. A ca.2.1 Ga Andean–type margin built on metasomatized lithosphere in the northern Yangtze craton, China: Evidence from high–Mg basalts and andesites[J]. *Precambrian Research*, 309: 309–324.
- Hoskin P W O. 2005. Trace–element composition of hydrothermal zircon and the alteration of Hadean zircon from the Jack Hills, Australia[J]. *Geochim. Cosmochim. Acta*, 69: 637–648.
- Huang Mingda, Cui Xiaozhuang, Cheng Aiguo, Ren Guangming, He Huzhuang, Chen Fenglin, Zhang Hengli, Zhang Jianqiang, Ren Fei. 2019. Late Paleoproterozoic A–type granitic rocks in the northern Yangtze block: evidence for breakup of the Columbia supercontinent[J]. *Acta Geologica Sinica*, 93(3): 565–584(in Chinese with English abstract).
- Hu Juan, Liu Xiaochun, Qu Wei, Cui Jianjun. 2012. Zircon U–Pb ages of Paleoproterozoic metabasites from the Tongbai orogen and their geological significance[J]. *Acta Geoscientica Sinica*, 33(3): 305–315(in Chinese with English abstract).
- Kusky T, Li J H, Santosh M. 2007. The Paleoproterozoic North Hebei Orogen: North China craton's collisional suture with the Columbia super–continent[J]. *Gondwana Res.*, 12: 4–28.
- Li L M, Lin S F, W.Davis D, Xiao W J, Xing G F, Yin C Q. 2014. Geochronology and geochemistry of igneous rocks from the Kongling terrane: Implications for Mesoproterozoic to Paleoproterozoic crustal evolution of the Yangtze Block[J]. *Precambrian Research*, 255: 30–47.
- Li Q W, Zhao J H, Wang W. 2019. Ca. 2.0 Ga mafic dikes in the Kongling Complex, South China: Implications for the reconstruction of Columbia[J]. *Journal of Asian Earth Sciences*, 169: 323–335.
- Liu F L, Zhang J, Liu C H. 2017. Archean to Paleoproterozoic Evolution of the North China Craton: Preface[J]. *Precambrian Research*, 303: 1–9.
- Liu, X C, Jahn B M, Dong S W, Lou Y X, Cui J J. 2008a. High–pressure metamorphic rocks from Tongbaishan, central China: U–Pb and ⁴⁰Ar/³⁹Ar age constraints on the provenance of protoliths and timing of metamorphism[J]. *Lithos*, 105 (3/4): 301–318.
- Liu, X C, Jahn B M, Cui J J, Li S Z, Wu Y B, Li X H. 2010a. Triassic retrograded eclogites and Cretaceous gneissic granites in the Tongbai Complex, central China: Implications for the architecture of the HP/UHP Tongbai–Dabie–Sulu collision zone[J]. *Lithos*, 119 (3/4): 211–237.
- Liu Xiaochun, Li Sanzhong, Jiang Boming. 2015. Tectonic evolution of the Tongbai–Hong’an orogen in central China: From oceanic subduction/accretion to continent–continent collision[J]. *Science China: Earth Sciences*, 58: 1477–1496(in Chinese with English abstract).
- Liu X M, Gao S, Diwu C R, Ling W L. 2008b. Precambrian crustal growth of Yangtze craton as revealed by detrital zircon studies[J]. *American Journal of Science*, 308(4): 421–468.
- Liu Y S, Gao S, Hu Z C, Gao C G, Zong K Q, Wang D B. 2010b. Continental and oceanic crust recycling–induced melt–peridotite interactions in the Trans–North China Orogen: U–Pb dating, Hf isotopes and trace elements in zircons from mantle xenoliths[J]. *Journal of Petrology*, 51(1/2): 537–571.
- Liu Y S, Hu Z C, Zong, K Q, Gao C G, Gao S, Xu J, Chen H H. 2010c. Reappraisal and refinement of zircon U–Pb isotope and trace element analyses by LA–ICP–MS[J]. *Chinese Science Bulletin*, 55(15): 1535–1546.
- Ludwig Kenneth R. 2008. User's Manual for Isoplot 3.6: A Geochronological Toolkit for Microsoft Excel[M]. Berkeley: Berkeley Geochronology Center.
- Pelleter E, Cheilletz A, Gasquet D, Mouttaqi A, Annich M, Hakour A E, Delouie E, Féraud G. 2007. Hydrothermal zircons: A tool for ion microprobe U–Pb dating of gold mineralization (Tamlalt–

- Menhouhou gold deposit–Morocco[J]. *Chem. Geol.*, 245: 135–161.
- Peng M, Wu Y B, Gao S, Zhang H F, Wang J, Liu X C, Gong H J, Zhou L, Hu Z C, Liu Y S, Yuan H L. 2012. Geochemistry, zircon U–Pb age and Hf isotope compositions of Paleoproterozoic aluminous A–type granites from the Kongling terrain, Yangtze Block: Constraints on petrogenesis and geologic implications[J]. *Gondwana Research*, 22: 140–151.
- Qiu Xiaofei, Zhao Xiaoming, Yang Hongmei, Wei Yunxu, Wu Nianwen, Lu Shansong, Jiang Tuo, Penglian. 2017. Paleoproterozoic metamorphic event in the nucleus of the Yangtze craton: Evidence from U–Pb geochronology of the metamorphic zircons from the khondalite[J]. *Geological Bulletin of China*, 36(5): 706–714(in Chinese with English abstract).
- Qiu Y M, Gao S, McNaughton N J, Groves D I. 2000. First evidence of >3.2 Ga continental crust in the Yangtze craton of south China and its implications for Archean crustal evolution and Phanerozoic tectonics[J]. *Geology*, 28: 11.
- She Zhengbing. 2007. Detrital Zircon Geochronology of the Upper Proterozoic–Mesozoic Clastic Rocks in the Mid–Upper Yangtze Region[D]. Wuhan: China University of Geosciences (in Chinese with English abstract).
- Sun M, Chen N S, Zhao G C, A. Wilde S, Ye K, Guo J H, Chen Y, Yuan C. 2008. U–Pb Zircon and Sm–Nd isotopic study of the Huangtuling granulite, Dabie–Sulu belt, China: implication for the Paleoproterozoic tectonic history of the Yangtze craton[J]. *American Journal of Science*, 308(4): 469–483.
- Sun S S, McDonough W F. 1989. Chemical and isotopic systematics of oceanic basalts: Implications for mantle composition and processes[J]. *Geological Society, London, Special Publications*, 42: 313–345.
- Vavra G, Gebauer D, Schmid R, Compston W. 1996. Multiple zircon growth and recrystallization during polyphase Late Carboniferous to Triassic metamorphism in granulites of the Ivrea Zone (Southern Alps): An ion microprobe (SHRIMP) study[J]. *Contrib. Mineral. Petrol.*, 122: 337–358.
- Vervoort J, Blichert–Toft J. 1999. Evolution of the depleted mantle: Hf isotope evidence from juvenile rocks through time[J]. *Geochim. Cosmochim. Acta*, 63: 533–556.
- Wan Y S, Song B, Liu D Y, Wilde S A, Wu J S, Shi Y R, Yin X Y, Zhou H Y. 2006. SHRIMP U–Pb zircon geochronology of Palaeoproterozoic metasedimentary rocks in the North China Craton: Evidence for a major Late Palaeoproterozoic tectonothermal event[J]. *Precambrian Research*, 149: 249–271.
- Wang C M, He X Y, M. Carranza E J, Cui C M. 2019. Paleoproterozoic volcanic rocks in the southern margin of the North China Craton, central China: Implications for the Columbia supercontinent[J]. *Geoscience Frontiers*, 1–19.
- Wang Yanbin, Liu Dunyi, Zeng Pusheng, Yang Zhusen, Meng Yifeng, Tian Shihong. 2004. SHRIMP U–Pb geochronology of Xiaotongguanshan quartz–dioritic intrusions in Tongling district and its petrogenetic implications[J]. *Acta Petrologica et Mineralogica*, 23(4): 298–304(in Chinese with English abstract).
- Wang Z J, Wang J, Deng Q, Du Q D, Zhou X L, Yang F, Liu H. 2015. Paleoproterozoic I–type granites and their implications for the Yangtze block position in the Columbia supercontinent: Evidence from the Lengshui Complex, South China[J]. *Precambrian Research*, 263: 157–173.
- Wei Junqi, Jing Mingting. 2013. Chronology and geochemistry of amphibolites from the Kongling complex[J]. *Chinese Journal of Geology*, 48(4): 970–983(in Chinese with English abstract).
- Wu Fuyuan, Li Xianhua, Zheng Yongfei, Gao Shan. 2007. Lu–Hf isotopic systematics and their applications in petrology[J]. *Acta Petrologica Sinica*, 23(2): 185–220(in Chinese with English abstract).
- Wu F Y, Yang Y H, Xie L W, Yang J H, Xu P. 2006. Hf isotopic compositions of the standard zircons and baddeleyites used in U–Pb geochronology[J]. *Chemical Geology*, 234: 105–126.
- Wu Yuanbao, Chen Daogong, Xia Qunke, Tu Xianglin, Cheng Hao, Yang Xiaozhi. 2003. In–situ trace element analyses and Pb–Pb dating of zircons in granulite from Huangtuling, Dabieshan by LAM–ICP–MS[J]. *Science in China(Series D)*, 33(1): 20–28(in Chinese).
- Wu Y B, Gao S, Gong H J, Xiang H, Jiao W F, Yang S H, Liu Y S. 2009. Zircon U–Pb age, trace element and Hf isotope composition of Kongling terrane in the Yangtze Craton: Refining the timing of Palaeoproterozoic high–grade metamorphism[J]. *Journal of Metamorphic Geology*, 27: 461–477.
- Wu Y B, Gao S, Zhang H F, Zheng J P, Liu X C, Wang H, Gong H J, Zhou L, Yuan H L. 2012. Geochemistry and zircon U–Pb geochronology of Paleoproterozoic arc related granitoid in the Northwestern Yangtze Block and its geological implications[J]. *Precambrian Research*, 200–203: 26–37.
- Wu Y B, Zheng Y F. 2013. Tectonic evolution of a composite collision orogen: An overview on the Qinling–Tongbai–Hong’an–Dabie–Sulu orogenic belt in central China[J]. *Gondwana Research*, 23: 1402–1428.
- Wu Y B, Zheng Y F, Gao S, Jiao W F, Liu Y S. 2008. Zircon U–Pb age and trace element evidence for Paleoproterozoic granulite–facies metamorphism and Archean crustal rocks in the Dabie Orogen[J]. *Lithos*, 101: 308–322.
- Wu Yuanbao, Zheng Yongfei. 2004. Mineral genesis of zircon and its constraint to the explain of U–Pb ages[J]. *Chinese Science Bulletin*, 49(16): 1589–1604(in Chinese).
- Xia L Q, Xia Z C, Xu X Y, Li X M, Ma Z P. 2013. Late Paleoproterozoic rift–related magmatic rocks in the North China Craton: Geological records of rifting in the Columbia supercontinent[J]. *Earth–Science Reviews*, 125: 69–86.

- Xia Qunke, Zheng Yongfei, Ge Ningjie, Deloule E. 2003. U-Pb ages and oxygen isotope composition of zircons from gneiss of Huangtuling, northern Dabie: Old protolith and multi-stage evolution[J]. *Acta Petrologica Sinica*, 19(3): 506-512(in Chinese with English abstract).
- Yin C Q, Lin S F, W.Davis D, Zhao G C, Xiao W J, Li L M, He Y H. 2013. 2.1-1.85 Ga tectonic events in the Yangtze Block, South China: Petrological and geochronological evidence from the Kongling Complex and implications for the reconstruction of supercontinent Columbia[J]. *Lithos*, 182-183: 200-210.
- Zhai M G, Liu W J. 2003. Palaeoproterozoic tectonic history of the North China craton: A review[J]. *Precambrian Research*, 122: 183-199.
- Zhang Lijuan, Ma Changqian, Wang Lianxun, She Zhenbing, Wang Shiming. 2011. Discovery of Paleoproterozoic rapakivi granite on the northern margin of the Yangtze block and its geological significance[J]. *Chinese Science Bulletin*, 56(1): 44-57(in Chinese).
- Zhang Shaobing, Zheng Yongfei. 2007. Growth and reworking of the Yangtze continental nucleus: Evidence from zircon U-Pb ages and Hf isotope[J]. *Acta Petrologica Sinica*, 23(2): 393-402(in Chinese with English abstract).
- Zhang S B, Zheng, Y F, Wu, Y B, Zhao Z F, Gao S, Wu F Y. 2006a. Zircon U-Pb age and Hf isotope evidence for 3.8 Ga crustal remnant and episodic reworking of Archean crust in South China[J]. *Earth Planet. Sci. Lett.*, 252 (1), 56-71.
- Zhang S B, Zheng, Y F, Wu, Y B, Zhao Z F, Gao S, Wu F Y. 2006b. Zircon U-Pb age and Hf-O isotope evidence for Paleoproterozoic metamorphic event in South China[J]. *Precambrian Research*, 151: 265-288.
- Zhang S B, Zheng, Y F, Wu, Y B, Zhao Z F, Gao S, Wu F Y. 2006c. Zircon isotope evidence for 3.5 Ga continental crust in the Yangtze craton of China[J]. *Precambrian Research*, 146 (1): 16-34.
- Zhao G C, Cawood P. 2012. Precambrian geology of China[J]. *Precambrian Research*, 222-223: 13-54.
- Zhao Guochun. 2009. Metamorphic evolution of major tectonic unites in the basement of the North China Craton: Key issues and discussion[J]. *Acta Petrologica Sinica*, 25(8): 1772-1792(in Chinese with English abstract).
- Zheng J P, Griffin W L, O'Reilly S Y, Zhang M, Pearson N, Pan Y M. 2006. Widespread Archean basement beneath the Yangtze craton[J]. *Geology*, 34(6): 417-420.
- Zhou G Y, Wu Y B, Wang H, Qin Z W, Zhang W X, Zheng J P, Yang S H. 2017. Petrogenesis of the Huashanguan A-type granite complex and its implications for the early evolution of the Yangtze Block[J]. *Precambrian Research*, 292: 57-74.
- Zhou Liangliang, Wei Junqi, Wang Fang, Chou Xiumei. 2017. Optimization of the working parameters of LA-ICP-MS and its application to zircon U-Pb dating[J]. *Rock and Mineral Analysis*, 36(4): 350-359(in Chinese with English abstract).
- ### 附中文参考文献
- 陈超, 苑金玲, 郭盼, 黎方云, 孔令耀, 杨金香, 毛新武. 2020. 扬子地块~2.0 Ga 的区域变质事件对南北黄陵古元古代差异演化的启示[J]. *中国地质*, 47(4): 899-913
- 邓奇, 汪正江, 王剑, 崔晓庄, 马龙, 熊小辉. 2017. 扬子地块西北缘碑坝地区白玉~1.79 Ga A 型花岗岩的发现及其对构造演化的制约[J]. *地质学报*, 91(7): 1454-1466.
- 黄明达, 崔晓庄, 程爱国, 任光明, 何虎庄, 陈凤霖, 张恒利, 张建强, 任飞. 2019. 扬子北缘晚古元古代 A 型花岗岩质岩: Columbia 超大陆裂解的证据[J]. *地质学报*, 93(3): 565-584.
- 胡娟, 刘晓春, 曲玮, 崔建军. 2012. 桐柏造山带古元古代变质基性岩的锆石 U-Pb 年龄及其地质意义[J]. *地球学报*, 33(3): 305-315.
- 刘晓春, 李三忠, 江博明. 2015. 桐柏-红安造山带的构造演化: 从大洋俯冲/增生到陆陆碰撞[J]. *中国科学: 地球科学*, 45: 1088-1108.
- 邱啸飞, 赵小明, 杨红梅, 魏运许, 吴年文, 卢山松, 江拓, 彭练红. 2017. 扬子陆核古元古代变质事件——来自孔兹岩系变质锆石 U-Pb 同位素年龄的证据[J]. *地质通报*, 36(5): 706-714.
- 余振兵. 2007. 中上扬子上元古界一中生界碎屑锆石年代学研究[D]. 武汉: 中国地质大学研究生院.
- 王彦斌, 刘敦一, 曾普胜, 杨竹森, 蒙义峰, 田世洪. 2004. 铜陵地区小铜官山石英闪长岩锆石 SHRIMP 的 U-Pb 年龄及其成因指示[J]. *岩石矿物学杂志*, 23(4): 298-304.
- 魏君奇, 景明明. 2013. 崆岭杂岩中角闪岩类的年代学和地球化学[J]. *地质科学*, 48(4): 970-983.
- 吴福元, 李献华, 郑永飞, 高山. 2007. Lu-Hf 同位素体系及其岩石学应用[J]. *岩石学报*, 23(2): 185-220.
- 吴元保, 陈道公, 夏群科, 涂湘林, 程昊, 杨晓志. 2003. 大别山黄土岭麻粒岩中锆石 LAM-ICP-MS 微区微量元素分析和 Pb-Pb 定年[J]. *中国科学(D 辑)*, 33(1): 20-28.
- 吴元保, 郑永飞. 2004. 锆石成因矿物学研究及其对 U-Pb 年龄解释的制约[J]. *科学通报*, 49(16): 1589-1604.
- 夏群科, 郑永飞, 葛宁洁, Deloule E. 2003. 大别山北部黄土岭片麻岩的锆石 U-Pb 年龄和氧同位素组成: 古老的原岩和多阶段历史[J]. *岩石学报*, 19(3): 506-512.
- 张丽娟, 马昌前, 王连训, 余振兵, 王世明. 2011. 扬子地块北缘古元古代环斑花岗岩的发现及其意义[J]. *科学通报*, 56(1): 44-57.
- 张少兵, 郑永飞. 2007. 扬子陆核的生长和再造: 锆石 U-Pb 年龄和 Hf 同位素研究[J]. *岩石学报*, 23(2): 393-402.
- 赵国春. 2009. 华北克拉通基底主要构造单元变质作用演化及其若干问题讨论[J]. *岩石学报*, 25(8): 1772-1792.
- 周亮亮, 魏均启, 王芳, 仇秀梅. 2017. LA-ICP-MS 工作参数优化及在锆石 U-Pb 定年分析中的应用[J]. *岩矿测试*, 36(4): 350-359.